

Welcome Home!



Designer Series Home
+ Included Luxury Options



2720 S. Prescott Ct.
Wichita, KS 67215



STOCKTON
Floor Plan

3
Bedrooms

2
Bathrooms

3
Car Garage

1,660
Total Finished Sq.Ft.

Why You Will Love This Home

- Irrigation Well, Sprinkler System & Sod
- Quartz Countertops Throughout
- Wood Laminate in Entry, Living, Dining & Kitchen
- Designer Touches Like Decorative Beams, Luxury Lighting, Painted Drop Zone & Open Railing
- Luxury Kitchen Appliances, Cabinets, Features and Finishes
- Master Suite Features Tile Flooring, Full-Tile Walk-In Shower, a Walk-In Closet with Off-Season Storage & More
- 10 ft. Ceilings in Main Living & Master Suite
- Features: Energy Efficient Pella® Windows, Chamberlain® myQ® Smart Garage Door Opener, Honeywell® Wi-Fi Thermostat & Dual Zoned Energy Efficient HVAC System, Better Indoor Air Quality & a Cooktop Vented to the Outside
- Unfinished View-Out Basement
- 1-Year Builder Warranty

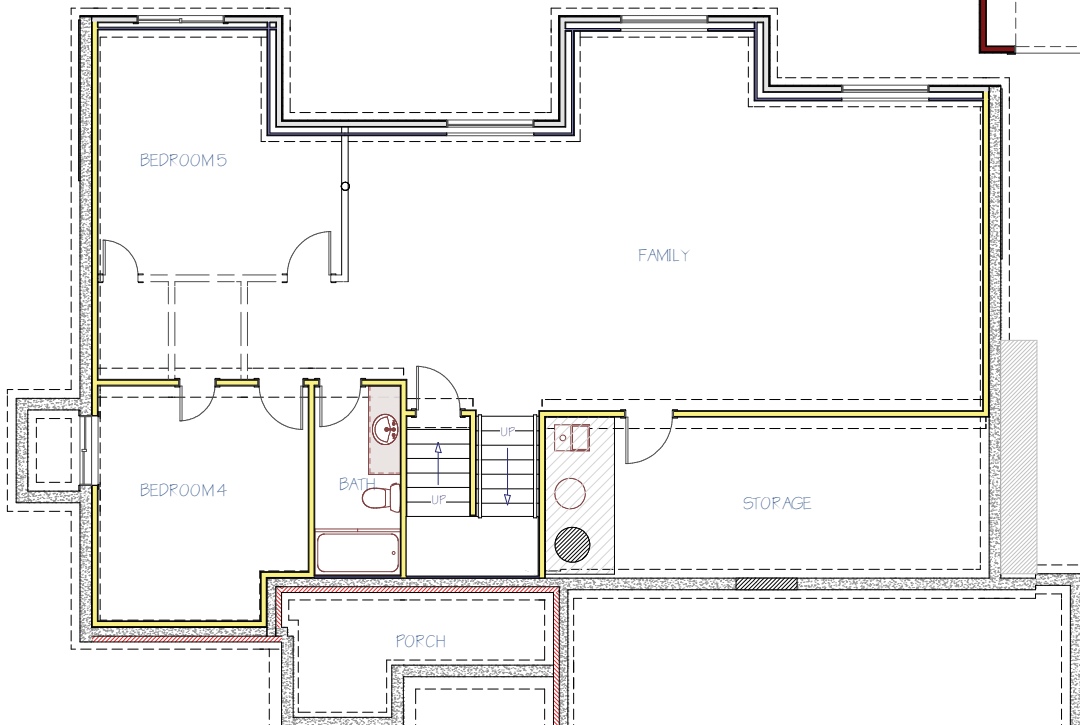
The Community Features:

- Salt Water Swimming Pool
- Playground
- Large Stocked Pond
- Goddard Schools
- West Wichita Shopping
- Convenient Location



THE STOCKTON Floor Plan

MAIN FLOOR LAYOUT
1,660
Main Floor Sq.Ft.



BASEMENT POTENTIAL

1,271

Possible Finished
Basement Sq.Ft.

2 Bedrooms | 1 Bathroom
Additional Family/Rec Room

Disclaimer: The information contained herein is deemed reliable but cannot be guaranteed as to its accuracy. Current prices may change without notice and differ from what is indicated here. Floor plans, photos and graphics are for illustrative purposes and are only intended to be used as a guide. Illustrations may include upgrades and optional features. All information including square footage, bedrooms, bathroom and dimensions may vary from what is indicated here. We recommend to the buyer that any information of special interest, should be obtained through independent verification.

Scott Darrenkamp
NEW HOME SPECIALIST

C | (316) 250.4122

ScottD@MillerFamilyHomes.com

