

Welcome Home!



Designer Series Home
+ Included Luxury Options



2711 S. Prescott Cir.
Wichita, KS 67215



PRESCOTT
Floor Plan

5
Bedrooms

3
Bathrooms

3
Car Garage

2,680
Total Finished Sq.Ft.

Why You Will Love This Home

- Irrigation Well, Sprinkler System & Sod
- Enhanced Outdoor Living w/ Covered Composite Deck
- Quartz Countertops Throughout
- Wood Laminate in Entry, Living, Dining & Kitchen
- Decorative Tray Ceiling with Stained Wood Beams
- Luxury Kitchen Features and Finishes
- Enhanced Master Bedroom & Bathroom Suite Complete with a Walk-In Master Closet with Off-Season Storage
- Painted Drop Zone in Owner's Entry
- Luxury Lighting Package
- Finished View-Out Basement
- Designer Curb Appeal Upgrades
- 92% Energy Efficient Furnace
- Passive Radon Vent
- 1-Year Builder Warranty

The Community Features:

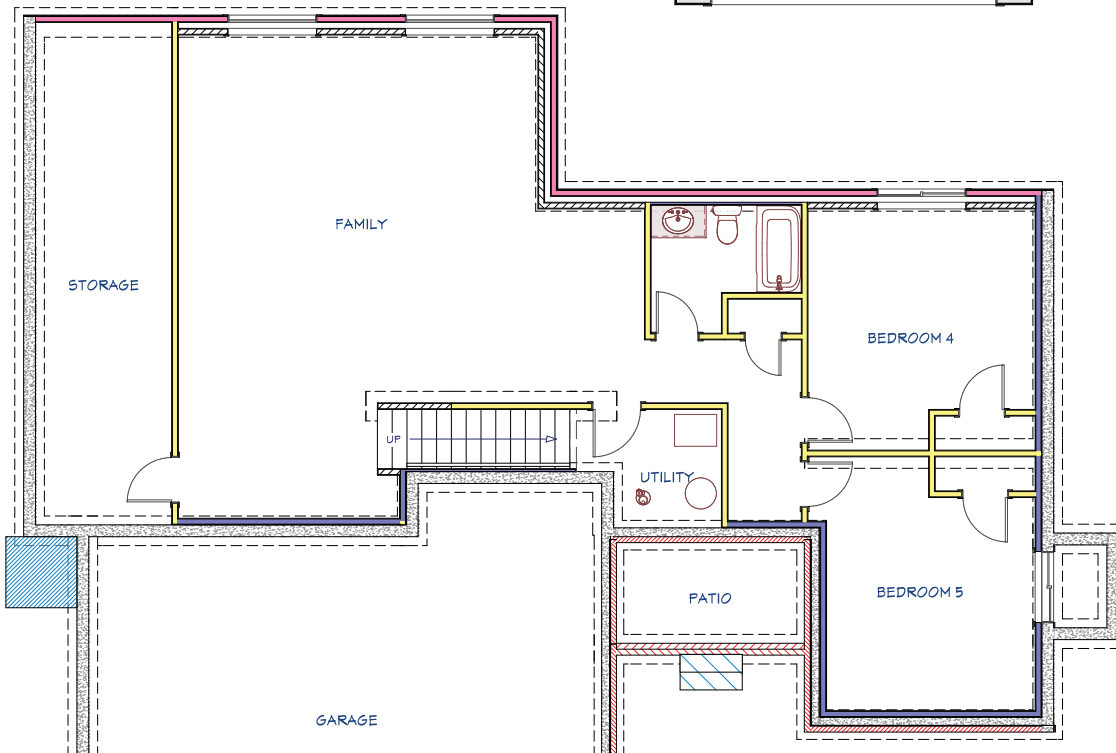
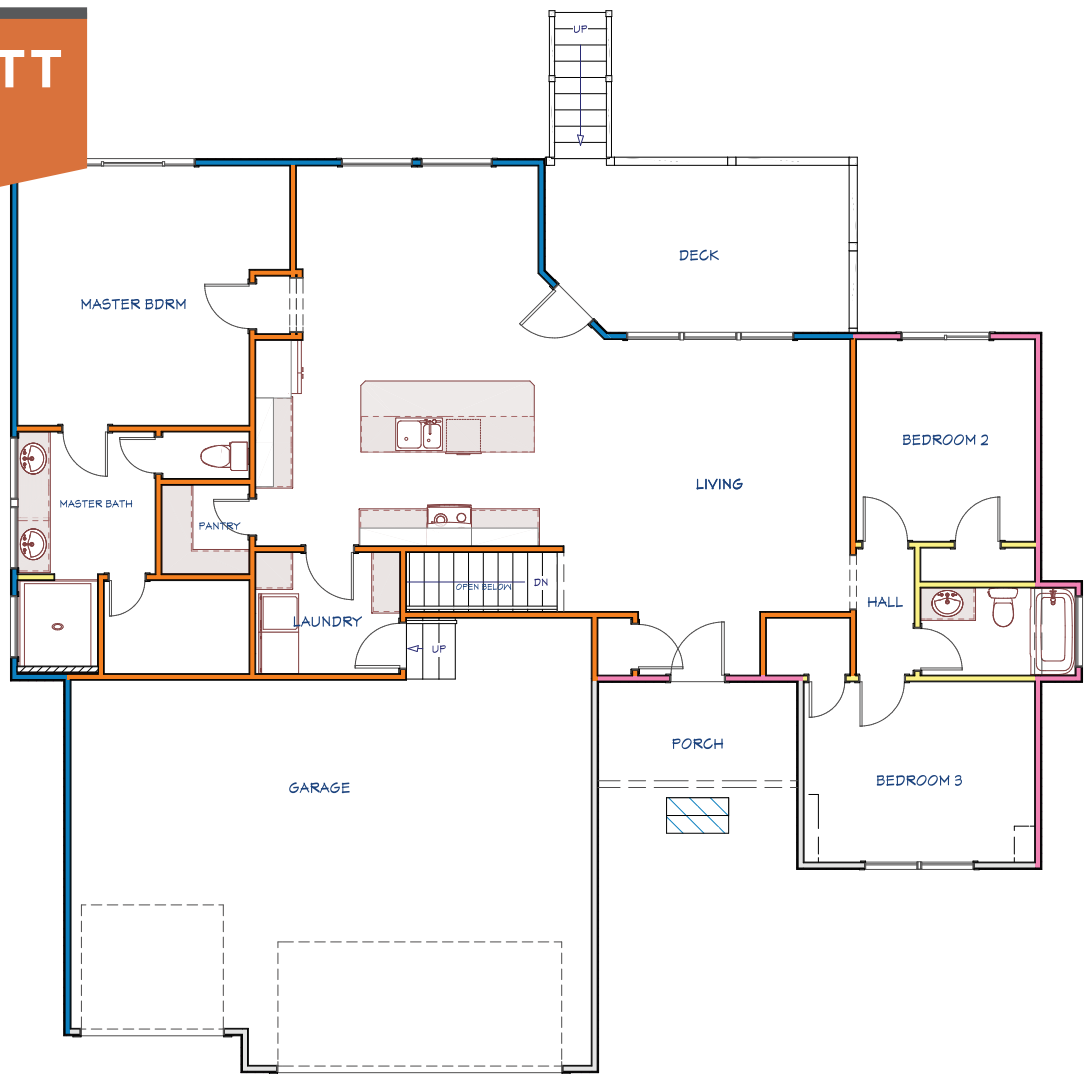
- Salt Water Swimming Pool
- Playground
- Large Stocked Pond
- Goddard Schools
- West Wichita Shopping
- Convenient Location



THE PRESCOTT *Floor Plan*

MAIN FLOOR LAYOUT

1,576
Main Floor Sq.Ft.



BASEMENT LAYOUT

1,104
Finished Basement Sq.Ft.

Disclaimer: The information contained herein is deemed reliable but cannot be guaranteed as to its accuracy. Current prices may change without notice and differ from what is indicated here. Floor plans, photos and graphics are for illustrative purposes and are only intended to be used as a guide. Illustrations may include upgrades and optional features. All information including square footage, bedrooms, bathroom and dimensions may vary from what is indicated here. We recommend to the buyer that any information of special interest, should be obtained through independent verification.

Scott Darrenkamp
NEW HOME SPECIALIST

C | (316) 250.4122

ScottD@MillerFamilyHomes.com

