

STOCKTON
PLAN

MAIN FLOOR

1,660
SQ. FT.

3
BEDROOMS

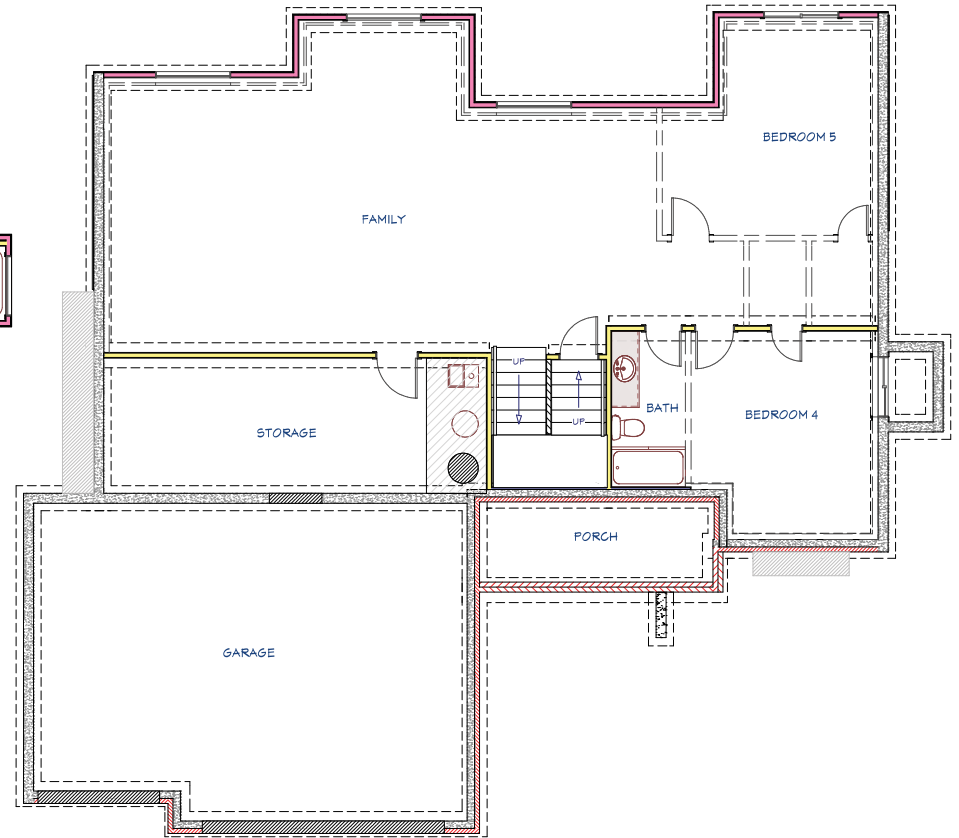
2
BATHROOMS

POSSIBLE BASEMENT

1,271
FINISHED SQ. FT.

2
BEDROOMS

1
BATHROOM



Disclaimer: Please note the floor plan is for illustrative purposes and is to be used as a guide only. The illustrations may include upgrades and optional features. Final square feet, bedrooms and bathrooms may vary from what is indicated here.

STOCKTON ELEVATION OPTIONS

ELEVATION A



FEATURES

- Open Floor Plan
- 10 ft. Ceilings in Main Living & Master Suite
- Stainless Steel Appliances
- Walk-In Pantry
- Walk-In Master Closet with Off-Season Storage
- 92% Energy Efficient Furnace
- Passive Radon Vent
- 1-Year Builder Warranty

AVAILABLE IN

- Clear Creek
- Southern Ridge



ELEVATION OPTION B



ELEVATION OPTION C



Disclaimer: Please note the floor plan is for illustrative purposes and is to be used as a guide only. The illustrations may include upgrades and optional features. Final square feet, bedrooms and bathrooms may vary from what is indicated here.