

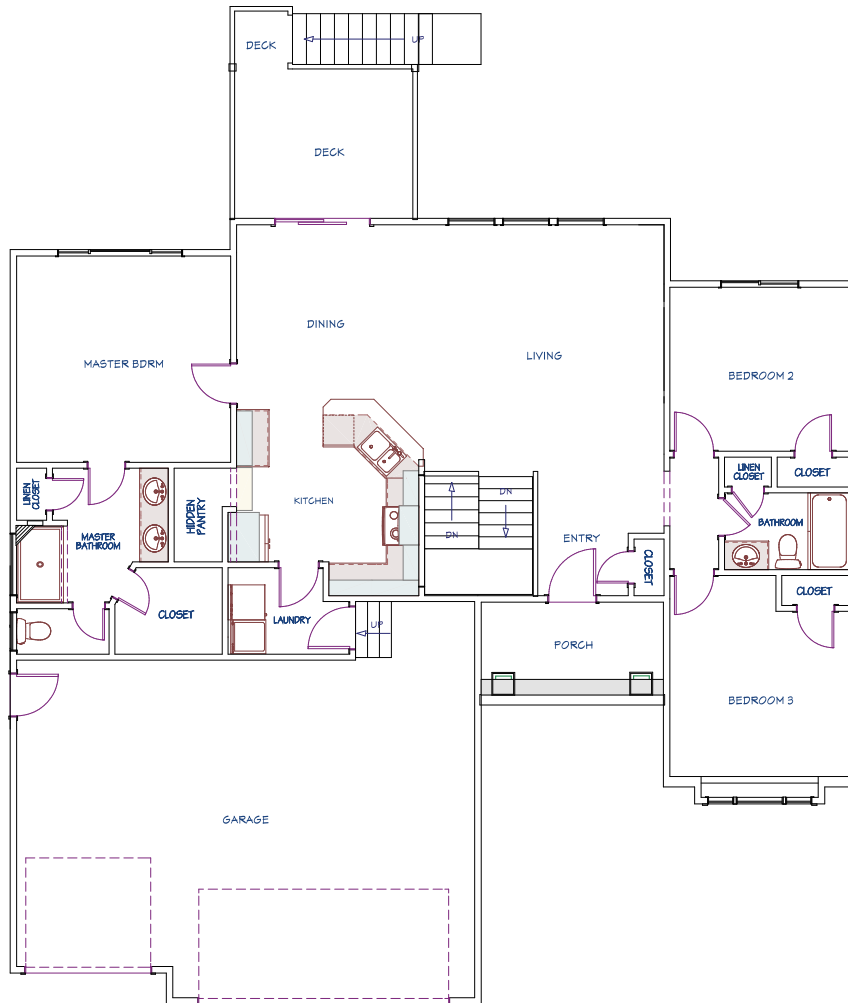
GEORGETOWN PLAN

MAIN FLOOR

1,503
SQ. FT.

3
BEDROOMS

2
BATHROOMS

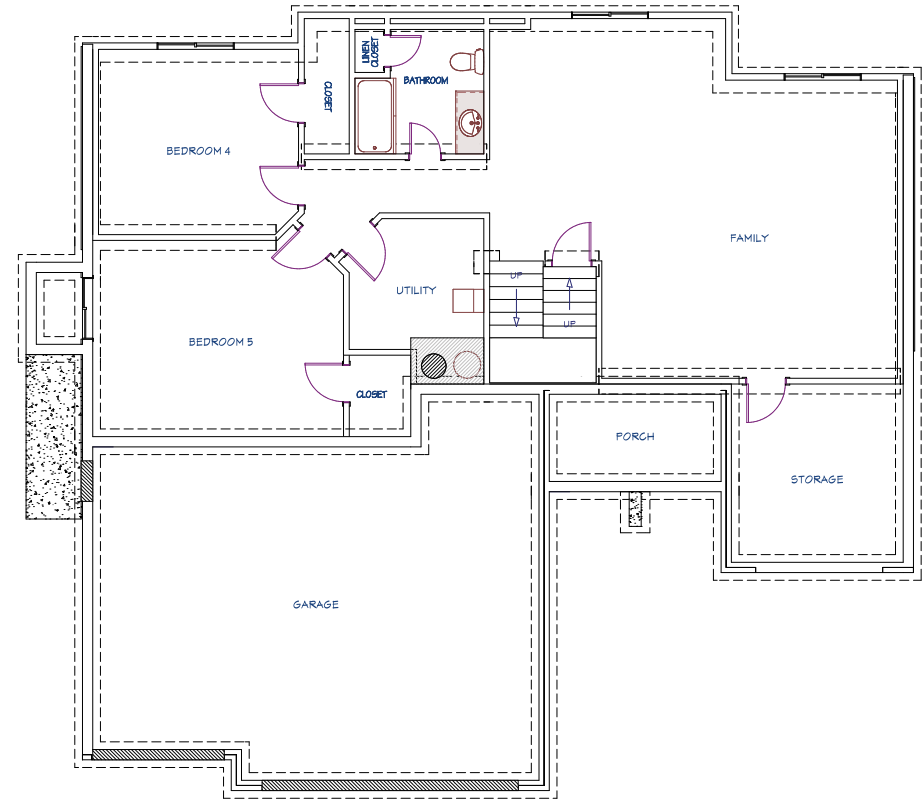


POSSIBLE BASEMENT

1,239
FINISHED SQ. FT.

2
BEDROOMS

1
BATHROOM



FEATURES

- Open Floor Plan
- 10 ft. Ceilings in Main Living & Master Suite
- Stainless Steel Appliances
- Hidden Large Walk-In Pantry
- Walk-In Master Closet with Off-Season Storage
- Dedicated Storage Throughout
- Multiple Healthy Home & Smart Home Features
- Passive Radon Vent
- 1-Year Builder Warranty



MILLERFAMILYHOMES.COM

Disclaimer: Please note the floor plan is for illustrative purposes and is to be used as a guide only. The illustrations may include upgrades and optional features. Final square feet, bedrooms and bathrooms may vary from what is indicated here.

GEORGETOWN ELEVATION OPTIONS

ELEVATION A



AVAILABLE IN

- Clear Creek
- Southern Ridge



MILLERFAMILYHOMES.COM

ELEVATION OPTION B



ELEVATION OPTION C



Disclaimer: Please note the floor plan is for illustrative purposes and is to be used as a guide only. The illustrations may include upgrades and optional features. Final square feet, bedrooms and bathrooms may vary from what is indicated here.