

Welcome Home!



Designer Series Home
+ Included Luxury Options

Village Estates

1133 Prairie Hill
Park City, KS 67219



MAPLE
Floor Plan

5
Bedrooms

3.5
Bathrooms

2
Car Tandem Garage

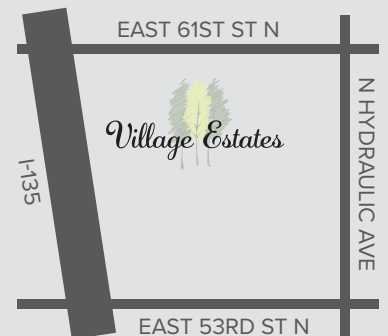
2,371
Total Finished Sq.Ft.

Why You Will Love This Home

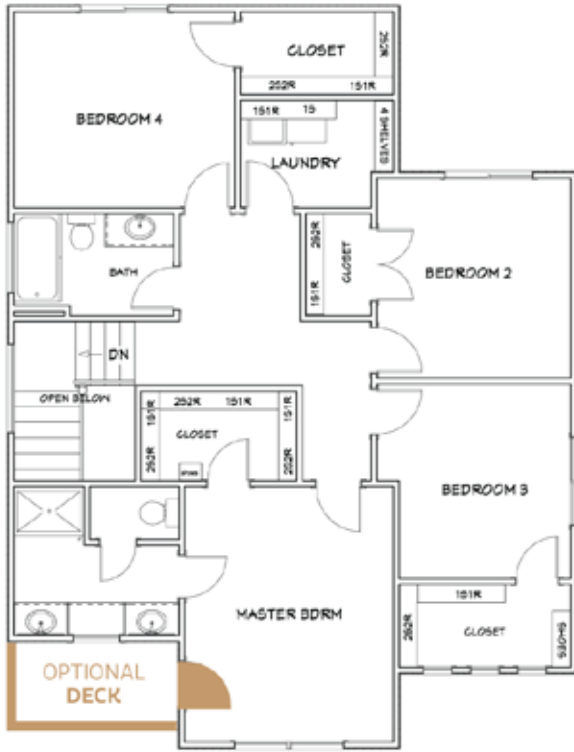
- Sprinkler System & Sod
- Finished Daylight Basement That Serves as an Additional Family Room or a 5th Bedroom + A 3rd Full Bathroom
- Quartz Countertops Throughout
- Wood Laminate in Entry, Living, Dining & Kitchen
- Enhanced Curb Appeal
- Luxury Kitchen Appliances, Features & Finishes
- Designer Features Throughout (Open Railing, Built-In's & More!)
- Open-Concept Main Floor with Drop Zone & Powder Bath
- Laundry Room on 2nd Floor with Bedrooms
- All 2nd Floor Bedrooms Have Walk-In Closets
- Features: Energy Efficient Pella® Windows, Honeywell® Wi-Fi Thermostat, Chamberlain® myQ® Smart Garage Door Opener, Better Indoor Air Quality & a Cooktop Vented to the Outside
- 1-Year Builder Warranty

Community Benefits

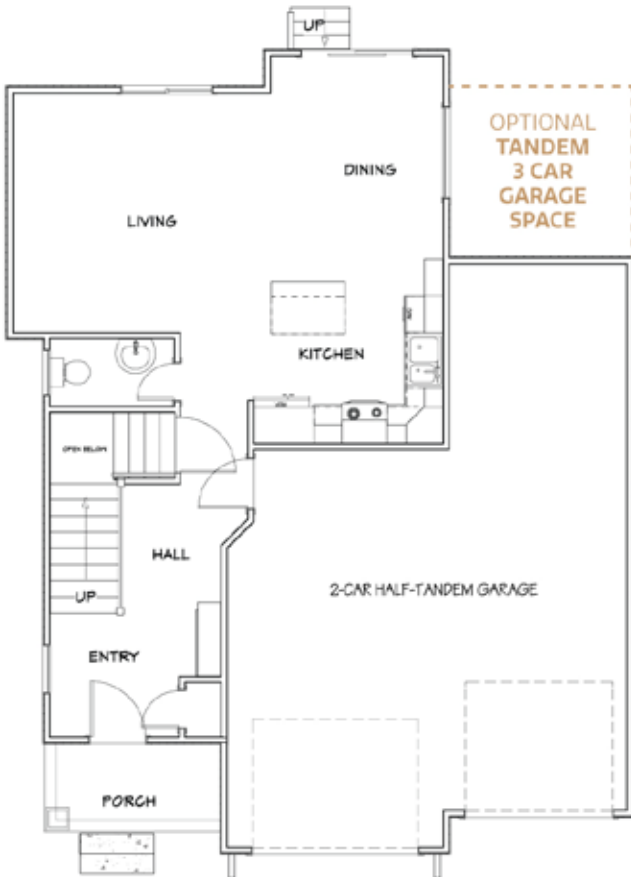
- Quiet Suburban Area
- Established Trees
- Large Stocked Fishing Ponds
- Close To Shopping & Dining
- Convenient Location
- Easy Access To I-135



2ND FLOOR LAYOUT
1,088
 2nd Floor Sq.Ft.

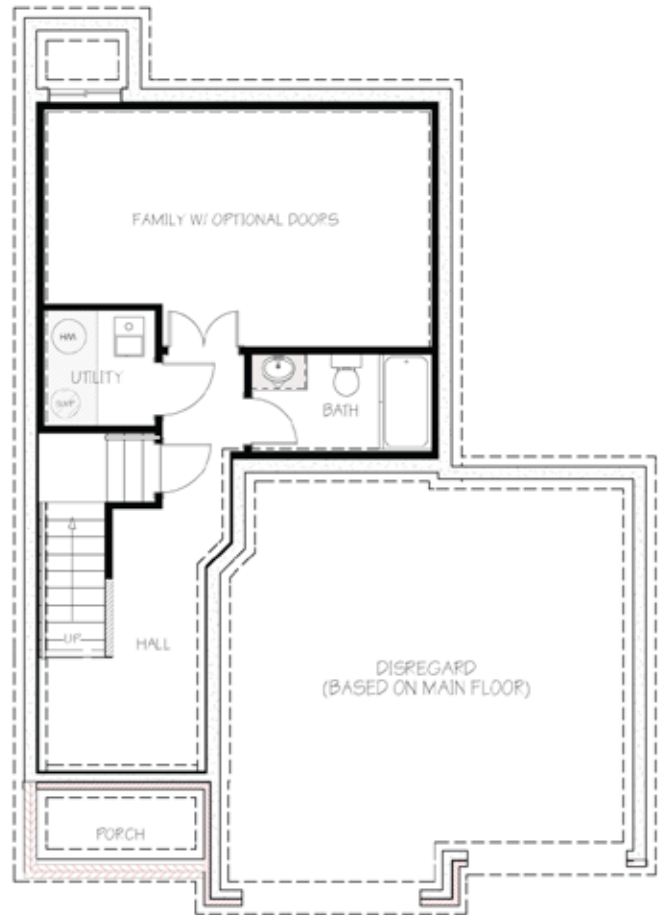


MAIN FLOOR LAYOUT
657
 Main Floor Sq.Ft.



THE MAPLE Floor Plan

BASEMENT LAYOUT
626
 Finished Basement Sq.Ft.



Disclaimer: The information contained herein is deemed reliable but cannot be guaranteed as to its accuracy. Current prices may change without notice and differ from what is indicated here. Floor plans, photos and graphics are for illustrative purposes and are only intended to be used as a guide. Illustrations may include upgrades and optional features. All information including square footage, bedrooms, bathroom and dimensions may vary from what is indicated here. We recommend to the buyer that any information of special interest, should be obtained through independent verification.

Jenny Castro
 NEW HOME SPECIALIST

C | (316) 252.9199
 Jenny@MillerFamilyHomes.com

