

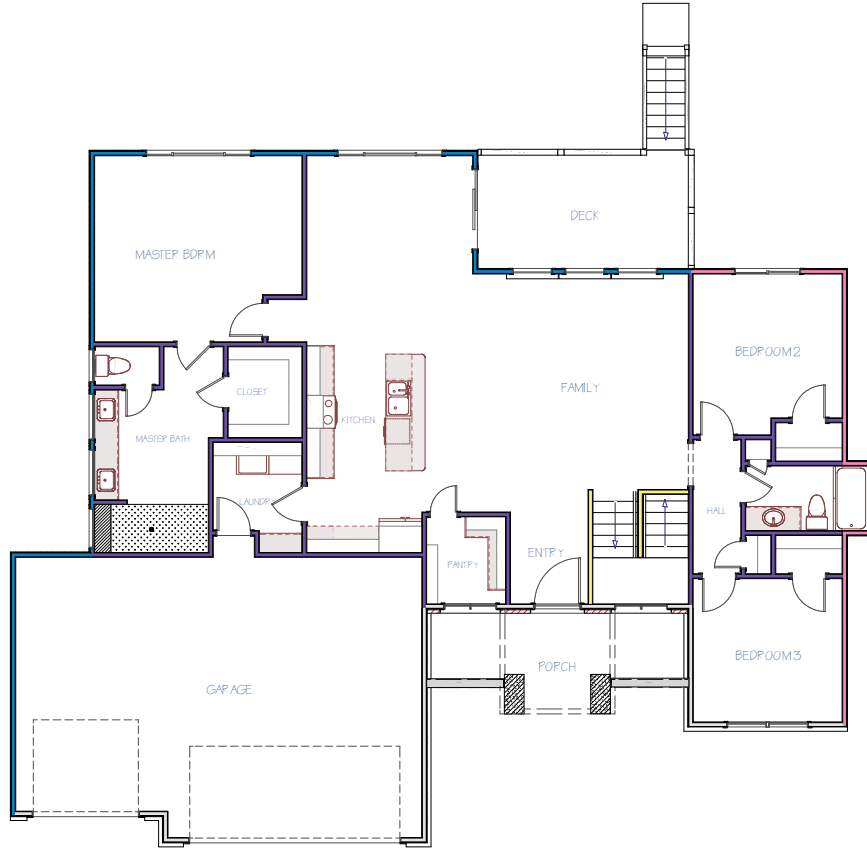
NORFOLK  
PLAN

MAIN FLOOR

1,792  
SQ. FT.

3  
BEDROOMS

2  
BATHROOMS

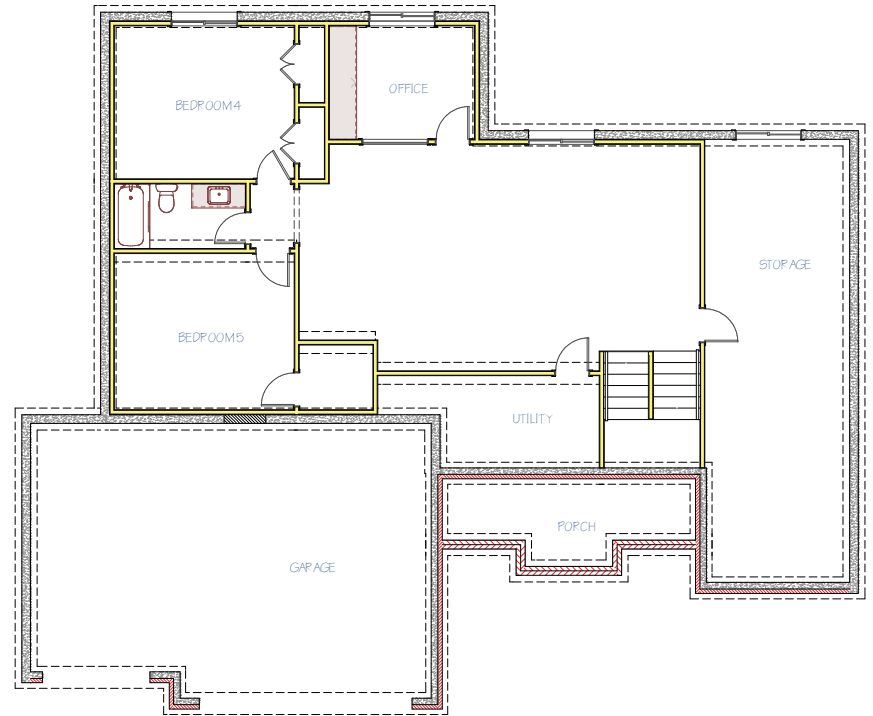


POSSIBLE BASEMENT

1,400  
FINISHED SQ. FT.

2  
BEDROOMS

1  
BATHROOM



FRONT ELEVATION

FEATURES

- Open Floor Plan With Large Living Room
- Decorative Ceilings In Kitchen & Dining Area
- Stainless Steel Appliances
- Walk-In Pantry
- Walk-In Master Closet with Off-Season Storage
- 92% Energy Efficient Furnace
- Passive Radon Vent
- 1-Year Builder Warranty

AVAILABLE IN

- Clear Creek
- Southern Ridge



MILLERFAMILYHOMES.COM

Disclaimer: Please note the floor plan is for illustrative purposes and is to be used as a guide only. The illustrations may include upgrades and optional features. Final square feet, bedrooms and bathrooms may vary from what is indicated here.