

Welcome Home!



Designer Series Home
+ Included Luxury Options



1217 Prairie Hill St.
Park City, KS 67219



BIRKSHIRE
Floor Plan

5
Bedrooms

3
Bathrooms

3
Car Garage

2,385
Total Finished Sq.Ft.

Why You Will Love This Home

- Unique Floor Plan that Features a “Breezeway” Owner’s Entry Complete with a Drop Zone, Laundry Room and Pantry
- Sprinkler System & Sod
- 3-Car Courtyard Garage with Convenient Service Door
- Quartz & Granite Countertops
- Wood Laminate in Entry, Living, Dining & Kitchen
- Designer Kitchen Appliances, Features & Finishes
- Luxury Master Bedroom & Bathroom Suite Complete with a Walk-In Closet with Off-Season Storage
- Open-Concept Floor Plan with Vaulted Living Room Ceiling
- Finished Daylight Basement with a Built-In Entertainment Center
- Features: Energy Efficient Pella® Windows, Honeywell® Wi-Fi Thermostat, Chamberlain® myQ® Smart Garage Door Opener, Better Indoor Air Quality & a Cooktop Vented to the Outside
- 1-Year Builder Warranty

Community Benefits

- Quiet Suburban Area
- Established Trees
- Large Stocked Fishing Ponds
- Close To Shopping & Dining
- Convenient Location
- Easy Access To I-135



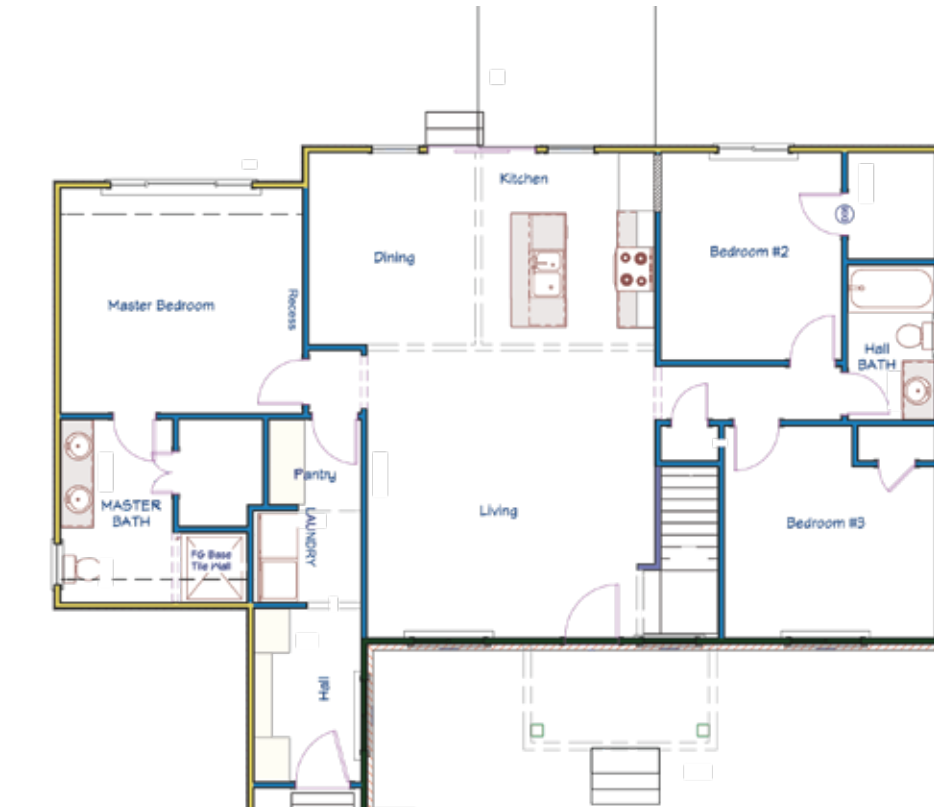
THE BIRKSHIRE

Floor Plan

MAIN FLOOR LAYOUT

1,404

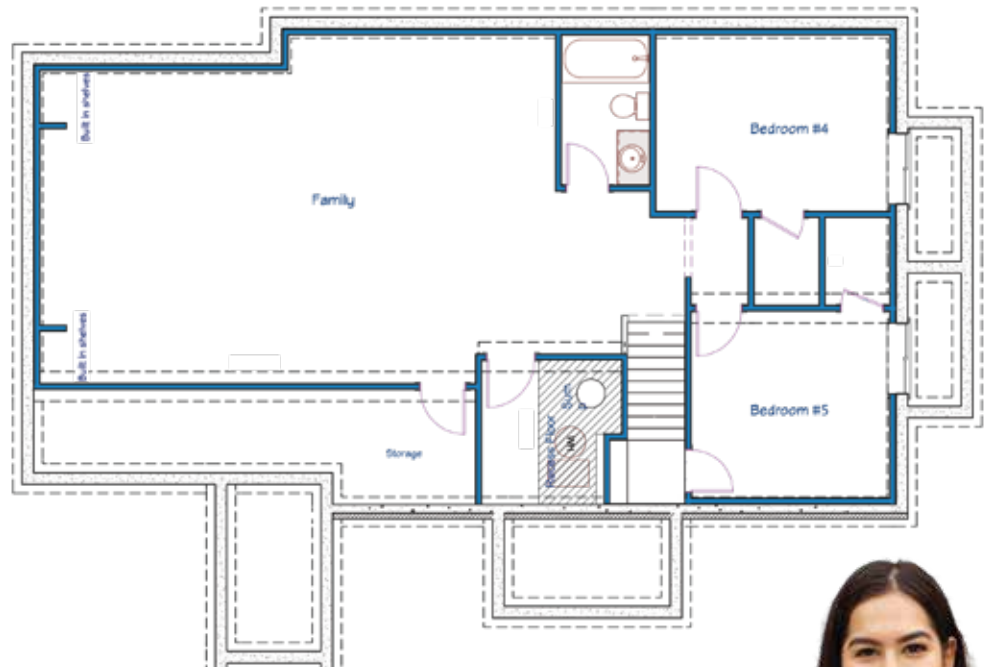
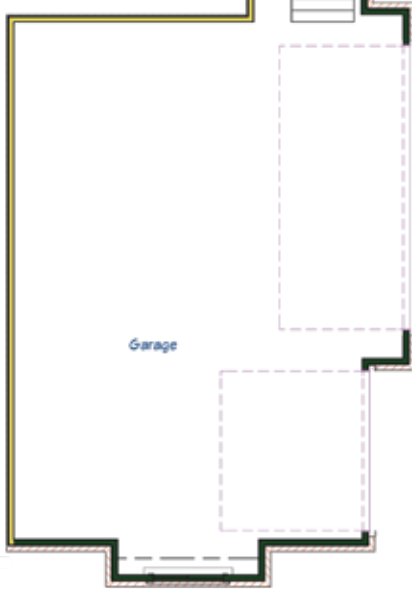
Main Floor Sq.Ft.



BASEMENT LAYOUT

981

Finished Basement Sq.Ft.



Disclaimer: The information contained herein is deemed reliable but cannot be guaranteed as to its accuracy. Current prices may change without notice and differ from what is indicated here. Floor plans, photos and graphics are for illustrative purposes and are only intended to be used as a guide. Illustrations may include upgrades and optional features. All information including square footage, bedrooms, bathroom and dimensions may vary from what is indicated here. We recommend to the buyer that any information of special interest, should be obtained through independent verification.

Jenny Castro
NEW HOME SPECIALIST

C | (316) 252.9199

Jenny@MillerFamilyHomes.com

