

LEAWOOD SIDE ENTRY
PLAN

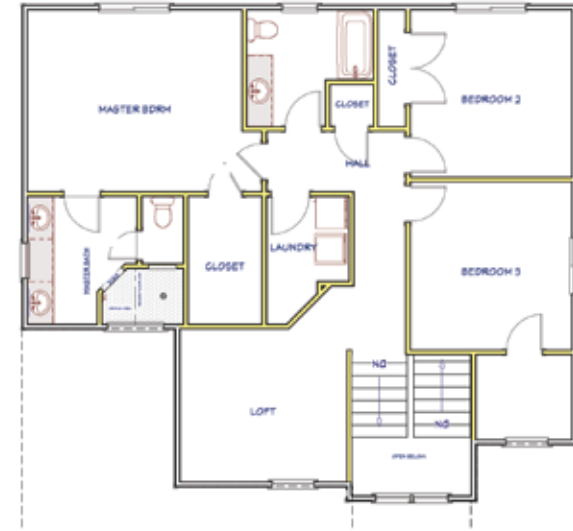
MAIN FLOOR

1,080 SQ. FT. | 1/2 BATHROOM



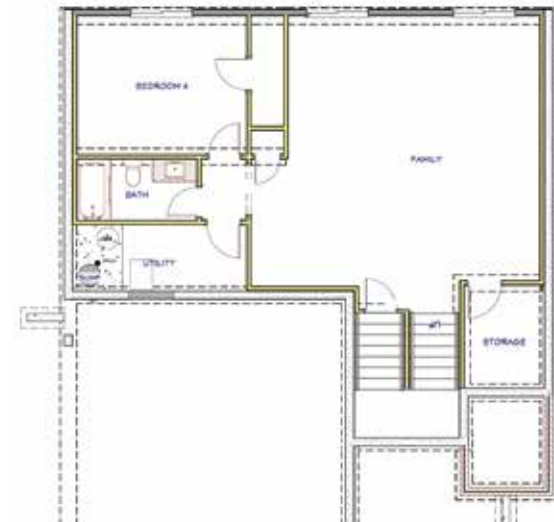
2ND FLOOR

1,223 SQ. FT. | 3 BEDROOMS | 2 BATHROOMS



POSSIBLE BASEMENT

820 FINISHED SQ. FT. | 1 BEDROOM | 1 BATHROOM



Disclaimer: Please note the floor plan is for illustrative purposes and is to be used as a guide only. The illustrations may include upgrades and optional features. Final square feet, bedrooms and bathrooms may vary from what is indicated here.

LEAWOOD SIDE ENTRY ELEVATION

ELEVATION



FEATURES

- Unique Sprawling Open-Concept Two Story Plan
- Pet Center Complete With Washing Station Off Garage Entry
- Dedicated Drop Zone and Half Bath Conveniently Located Off Garage Entry
- Massive Great Room With Windowed Staircase Feature
- Additional Living Space With The Upstairs Loft Space
- Third Living Space In The Basement
- Walk-In Pantry
- Walk-In Master Closet
- Two-Story Accommodating HVAC System
- 92% Energy Efficient Furnace
- Passive Radon Vent
- 1-Year Builder Warranty

AVAILABLE IN

- Clear Creek
- Southern Ridge



MILLERFAMILYHOMES.COM

Disclaimer: Please note the floor plan is for illustrative purposes and is to be used as a guide only. The illustrations may include upgrades and optional features. Final square feet, bedrooms and bathrooms may vary from what is indicated here.