



Beacon Charter High School for the Arts Code of Conduct 2019-2020

Introduction

This code of conduct reflects the acceptance of this school to take responsibility for both the success of all students and the security of the school environment. Acting as a district, this code of conduct preserves due process rights for students and is designed to provide a safe and secure learning environment for both students and faculty.

Without standards of conduct behavior boundaries for students are unclear and repercussions for violations may not be equitable or accepted by the community as a whole.

This Code of Conduct not only provides for a safe and orderly learning environment, it also promotes responsibility within each student through the demands of the school community.

Basic Standards of Behavior as Identified by the Student Government

The following “commandments” have been put together and endorsed by the school’s student government. There can be no stronger statements made about proper behavior. When the students define what is acceptable, then the rules are not simply adult rules but community rules.

From the desk of student council...

1. In order to function as a vibrant artistic community, student-artists will show respect towards their peers, the faculty and environment. Therefore, the student body will work peacefully and productively.
2. In order to help fulfill the mission of the Beacon Charter High School for the Arts, all student-artists will exhibit exemplary behavior in classrooms, have the respect to arrive on time, pay attention in class and complete all work as mature and responsible young adults.
3. During school hours, and while on school property, student-artists should not participate in any illegal activities out of respect for themselves, their fellow peers, faculty members and community.
4. Violence of any kind towards fellow student-artists and faculty will not be tolerated so as to keep the peaceful atmosphere intact.

The student government believes that only by following these guidelines will Beacon Charter High School for the Arts succeed in providing a safe, secure and artistic community for all of its student-artists.

Behavior Expectations

Beacon and Founders has three overarching expectations for student behavior. These expectations apply to student behavior in the classroom, in shared spaces, and in the community.

Behavior Expectations	Classroom	Shared Spaces (cafe, hallway, restroom, etc).	Community
Responsibility	Be accountable - Know and strive to exceed expectations - Self-advocate for support	Model responsible behaviors for younger students - Follow instructions for/during emergencies and drills - Arrive/return to class promptly when transitioning	Respect your audience (language, images, allergies, etc). - Help others, academically (siblings, neighbors, friends) - Apply creative thinking and problem solving when faced with a challenge of any kind
Respect	Listen actively when others are talking - Speak politely to classmates - Encourage others	Demonstrate courtesy (holding doors for others, saying "please," "thank you," "excuse me," etc.) - Respect personal space Avoid gossip	Respect diversity (race, culture, learning style, gender) - Demonstrate courtesy on buses and sidewalks - Be polite to Beacon's neighbors (businesses, restaurants, residents, etc).
Perseverance	Strive for more than "passing" - Use your resources - Stick with challenging tasks	Move quickly between destinations - Limit time out of class (e.g. bathroom breaks)	Follow through with commitments outside of school - Share your art with local venues

Note: Specific behavior violations (major and minor) are outlined in the Behavior Definitions document in the Appendix.

Compliance Committee

The Compliance Committee is a body that has been authorized by the school's board to intervene in discipline matters, hold hearings, and enter into behavior agreements with students and/or make recommendations to the school's board.

The Compliance Committee may be made up of a broad range of stakeholders depending on the nature of the offense. These members may include teachers, students, school support professionals, administration, parents and board members.

The committee will deliberate on cases that have been brought to it through administrative action. Students will be afforded an opportunity to have rights to be heard, have the process explained to them, and have an advocate attend with them, hear specific charges and be given a clear explanation of the consequences. Consequences can range from detention to community service to the committee's recommendation for exclusion from school for 45, 90 or 180 days.

At the conclusion of a compliance meeting, the student will be informed of the committee's decision and a behavior agreement will be entered into.

School Regulations

Our location on Main Street means that Beacon students have a responsibility to demonstrate good behavior. The school's reputation will be affected, either positively or negatively, by the actions and attitudes of the students.

Violations of any of the school regulations as stated below will result in disciplinary action as defined in this code of behavior.

Every faculty and staff member in the school has the authority and responsibility to enforce this code of conduct and the behavior expectations. Additionally, students may be asked to stay after school by any teacher for breaking either school or class rules. However, the primary responsibility for dealing with negative student behaviors will be the Principal.

Attendance

Perfect attendance is a rare occurrence in public schools. Even under the best of intentions and circumstances, absence and tardiness sometimes happen. In all cases of absence and tardiness a note from the student's parent or guardian is required. Without a written note, the absence or tardiness is to be considered unexcused. Notes signed by the parent/guardian are due on the morning that the student returns to school. Students who forge notes from their parent/guardian will be suspended.

Absences

Students' extended absences of three or more days require a doctor's note to be excused. Medical and clinical appointments should be scheduled after school. If scheduled during school, students are strongly encouraged to come to school before the appointment and return to school after. Parents may request homework and missed class assignments once the student has been absent for three or more consecutive days.

Any student who reaches four (4) days of absence (excused or unexcused) in the first quarter will be sent before a compliance committee for a review. This is a mandatory meeting that parents must be present for. Compliance committee will review why the student has been absent four (4) or more days in the first quarter and determine the best course of action to take.

After first quarter, attendance will continue to be monitored by the RtI (Response to Intervention) team and any students reaching ten (10) days of absence (excused or unexcused) will be referred to the compliance committee. Compliance committee will review why the student has been absent ten (10) or more days and determine the best course of action to take.

Students absent Ten (10) days or more (excused or unexcused) can be referred directly to the Board of Trustees for intervention if the compliance committee deems it necessary.

Students being taken out of school for vacations, will need to notify the school at least two weeks in advance. Families who do not notify the school of the absence two weeks in advance will not be given any school work for the time period they are away. Upon return the student will be given the work to make-up with one day to complete the work for every day they were absent. Example: student is out four days they have four days to complete the work a teacher assigns upon their return.

Compliance Committee at their discretion can implement the Give Back Program. When assigned to this program, students will give back time either with an extended school day or an extended school year until the prescribed number of days have been made up.

Tardies

Daily attendance is taken in the first block of the day; a student arriving late to their first block class will be considered late to school. Students who are present in school but do not report to class will be subject to disciplinary referral. When a student enters the school grounds or a school event, all school rules apply. Any student arriving after three blocks have been completed in the schedule will be considered absent for that school day. Students who arrive late to school on a day there is a school-associated event (dance, field trip, play, etc.) will not be permitted to attend.

Students must finish breakfast no later than 7:50 a.m. in order to facilitate getting to class on time.

Students late three times in one week (excused or unexcused) will be issued a detention by the main office. This detention will be given to ensure students are given ample time to recover any missing instructional time that may have been lost due to tardiness.

Dismissals

Students will not be dismissed early unless a signed note from a parent or guardian has been given to the front office by 8 A.M. Phone calls will not be accepted unless it is an emergency. Students who are dismissed before completing three blocks of the school day will be marked as absent for the whole day. Habitual dismissals can result in referral to compliance committee for excessive absenteeism.

Loss of Credit for Courses due to Absence

Students may not receive credit if they have missed more than eighteen (18) days of the school year for yearlong courses or nine (9) days for semester long courses as documented by the front office staff. Parents will be notified of the student's absence status through phone call and certified mail. After a student has accumulated eighteen (18) absences in a yearlong class or nine (9) absences in a semester long class, he/she may not receive credit for the year. In totaling absences, all absences, excused or unexcused, will be counted. Absences for sickness with or without a doctor's note, extra vacation, and truancy are all totaled together.

To receive credit for a course in which a student has been absent more than eighteen days for yearlong courses or nine days for semester course, a student may be assigned to the Give Back Program at the discretion of the Compliance Committee.

Students who do not meet the necessary requirements as set forth by the Compliance Committee will be required to attend summer school at their own expense to remediate the lost credits.

Academic Probation

Students will not be allowed to participate in extracurricular activities if they failed any classes during the previous quarter. Failure at Beacon Charter High School for the Arts is defined as any grade below a 70. Students who are involved in activities that span multiple quarters will be placed in a mandatory study hall to be conducted by the individual activity coordinators.. Students may resume participation in extracurricular activities the following quarter provided their grades are all at or above a 70. This policy applies to auditioning for roles for the next school year as well, if a student has failed classes during quarter four then they are not permitted to audition for the fall play.

Arts Night

Arts Nights are an opportunity to celebrate student artists and the tremendous amount of work they have put into their chosen arts fields. Participation in arts nights can be very stressful, it takes an enormous amount of time and effort on the behalf of the students and teachers to prepare for each night. Due to the amount of time required out of academic classes to prepare for arts nights, students who are failing 3 or more classes in the current quarter will not be allowed to participate. Failing is defined as any grade below a 70. Student artists will be assigned an alternative assignment by their arts teacher.

Diploma

Students at Beacon Charter High School for the Arts must fulfill the following requirements to receive a diploma.

- 4 Credits in English
- 4 Credits in Math
- 4 Credits in Science
- 3 Credits in History
- 2 Credits in Spanish
- 2 Credits in Health/Physical Education
- 2 Credits in Technology/Design

1 Credit in Senior Research Seminar
8 Credits in an Arts concentration
Proficiency on Senior Arts Portfolio
Completion of 10 hours of community service

Students who transfer into Beacon will have their transcripts reviewed to determine which courses and credits need to be completed.

Graduation Ceremony

The graduation ceremony is a school event that celebrates the accomplishments of our hard working students, parents and community. Only students who have completed all of the above requirements will be eligible to participate in the June graduation ceremony. A summer ceremony will be held in August for those seniors who were able to meet the academic requirements for graduation during the summer. Students are also reminded that the following additional requirements must be met to participate in the graduation ceremony:

- Attend 90 percent of the school days during senior year
- Have no more than 10 tardies/dismissals during the school year
- No more than one suspension during senior year
- Not currently serving a suspension on the day of the graduation ceremony
- Attend graduation rehearsal

A review of all senior records will occur no later than May 1st of the graduating year. Any student at risk of not participating in the graduation ceremony will be notified in writing and will meet with the Compliance committee to have their case heard.

A student may appeal a Compliance committee decision to Beacon's Board. Students can only appeal to the Board once their case has first been heard by the Compliance Committee.

Students whose behavior violates the Code of Conduct during the ceremony will be removed and not allowed to participate. Any student who does not participate in the graduation ceremony but has met all the requirements for a diploma will be able to pick up a diploma at school the next business day. Diplomas can not be mailed and can only be picked up by the student.

Dual and Concurrent Enrollment Policy

To promote the educational development and personal growth of its qualified students, Beacon Charter High School shall facilitate opportunities for those qualified students to take college-level courses at state or community colleges in order to earn college credits while still enrolled at Beacon.

- Dual enrollment - means that a student is enrolled at Beacon while simultaneously enrolled part-time or full-time as a non-matriculating student at a postsecondary institution, such as a community college, college or university.
- Concurrent enrollment - means that a student is enrolled in a dual enrollment course that is offered at Beacon and taught by its teachers who are approved by the postsecondary institutions.

Eligibility

To be eligible to participate in dual or concurrent enrollment courses, students must meet the following criteria:

- Be in good academic standing
- Have no major violations of the code of conduct

Students must also meet the eligibility criteria set forth by the college or university. Students who do not satisfactorily complete the dual or concurrent enrollment classes will not be eligible to continue in the programs.

Grading

All students in dual enrollment courses are required to submit a transcript for all courses enrolled in, to the College and Career Coordinator. All courses will be included on the high school transcript and included in the GPA, regardless if the student earned credit or not. One high school credit will be awarded for every three credit course taken at a college or university. Any credits earned will count towards a student's diploma. Should a student fail a dual or concurrent enrollment course that is needed to graduate high school, the student will not be eligible to participate in the graduation ceremony.

Cost

Courses offered at CCRI, RIC and URI will be paid for by the Prepare RI Fund. Beacon will be responsible for the costs of the required books at each of these institutions. Student may not sell back textbooks to the institutions but instead must turn the books into the College and Career Coordinator. Students that do not return books that are paid for by Beacon will be charged the full cost of the books. The cost for private colleges or universities, postsecondary career and technical institutes is not paid for by the Prepare RI Fund and therefore is the responsibility of the student and family. Transportation is not paid for or provided for any student participating in any dual enrollment program.

No low income student, as defined by the RI Department of Education shall be denied access to dual or concurrent enrollment coursework on their ability to pay course related tuition and fees.

Basic Rules to Protect our Collective Quality of Life and the School Environment (Category 1)

1. Respect

All students are expected to treat every individual in the building, including faculty, staff and fellow students with respect. We all share a learning community and the opinions of all members of our community are valued. Behaviors that detract from the learning community harm everyone. Racially or sexually offensive language affects our community negatively. Every student will be held accountable for their unruly and disorderly conduct. Respect of privacy and property is expected. The school's anti-bullying rules are specifically designed to prevent disrespect between Beacon community members.

MINOR: Defiance/Disrespect/Noncompliance

MAJOR: Defiance/Insubordination

2. Dress Code

The dress code at Beacon attempts to balance the rights of expression of the individual with the legal requirement that the school provide a safe and orderly educational environment for all students.

Prohibited:

- Clothing that promotes or portrays violence, offensive language, drugs or alcohol.
- Revealing clothing (regardless of gender). This includes, but is not limited to:
 - Sleeveless shirts (e.g. tank tops, muscle shirts, halter tops, off-shoulder shirts, etc.)
 - Shirts that expose the midriff or undergarments.
 - Sleepwear, pajama bottoms or slippers.
 - Hats, hoods, do-rags (With the exception of religious reasons and class requirements [e.g.in the kitchen, theatre, or laboratory])
 - Sunglasses inside the building
 - Outdoor coats, mittens, or gloves inside the building.
 - Shorts, skirts, and dresses less than “fingertip length” (i.e. hem must naturally fall at least at the student’s fingertips, with arms by sides and shoulders relaxed).

Students are not allowed to bring blankets or other bedding materials to school for use. Bringing this type of item from home can pose a health & safety risk.

Violations of the dress code which are immediately correctable (e.g. a hat that can be easily removed) will result in a **minor** behavior referral.

Violations of the dress code which cannot be immediately corrected (e.g. the student does not have another shirt to cover a sleeveless top) will result in a **major** behavior referral, and the student will not be permitted to return to class until a change of clothing can be provided.

3. Textbooks and [other course materials](#)

All Beacon textbooks and [other course materials](#) are to be returned before or upon completion of the final exam.

NOTE: If textbooks ([items](#)) are NOT returned, students will be ineligible to take their final exam and/or receive credit for their course work. Student will pay for all lost/missing books. ([materials](#))

4. Phones

- No student is permitted to use the telephones in the classroom, Main Office or other offices without permission. In case of emergency, students should obtain a pass to see a non-teaching staff member who will assist the student in making the necessary call.

The use of cell phones or other text-enabled devices is prohibited during school hours. Student cell phones are expected to be turned off during the school day.

- Students may not contact parents or guardians regarding early dismissal or illness via cell phones or other text-enabled devices.

- Parents/guardians should not contact students via cell phones during the school day, and are expected to call the main office for all correspondence.
- Teachers may, at their discretion, allow cell phone use for classroom activities, however, students are expected to immediately power cell phones off upon completion of the activity.
- Should a student need to charge their cell phone, they may do so only in the Principal's office.

Phones may be confiscated by any staff or faculty member for any technology violation. The devices will be held in the Main Office or Principal's office until the end of the school day.

MINOR: Technology Violation

MAJOR*: Technology Violation

*If a student refuses to surrender a cell phone to an faculty/staff member in response to a minor technology violation, the student is immediately sent to the Principal. The Principal will collect the phone and will issue a major behavior referral.

5. Food/Drink

Food is not permitted in the classrooms. Food should only be consumed in the cafeteria during designated times. The only drink allowed in the classrooms is water. Water must be in a clear resealable container. Students will not be allowed any food/drink in computer labs or while utilizing the computer carts in the classroom. Students arriving late to school with food/drink (e.g. iced coffee, breakfast sandwiches, etc), with the exception of their lunch, will be asked to discard the items before proceeding to their class.

6. Electronic Devices

Electronic devices, including cell phones, tablets, laptops, etc., are only permitted at teacher discretion throughout the school day.

Cell phones and other devices can potentially be a nuisance in the classroom. They can be stolen, cause interruptions to learning, and create tension between adults and students.

Students shall not use devices to record, transmit or post photos or videos of a teacher, staff member or other students at school or school events without their expressed written consent.

In emergency situations, parents should call the school rather than their child. When a parent calls the cell phone of their son or daughter then that parent is interrupting the entire class.

If a staff member (non-teaching or teaching) or faculty member asks a student to surrender the electronic device then the student must do so. Failure to comply with the request for an electronic device will result in suspension. Confiscated electronic devices will be returned only after the issue has been resolved.

If a student brings an electronic device to school, Beacon takes no responsibility, financial or otherwise, for a lost, confiscated, damaged or stolen device.

MINOR: Technology Violation

MAJOR: Technology Violation/Disruption/Defiance/Insubordination

7. Smoking/ [Vaping](#)

Beacon is a smoke-free campus and smoking, including electronic vaporizing, is not permitted within 1,000 feet of the school building. The three major reasons for this policy are:

1. Smoking is bad for your health and has proven to be fatal;
2. RI State law requires that schools be smoke free; and
3. Smokers need to find smoking spots and spread litter; this adversely affects our many valued neighbors.

[Tobacco and/or vaping devices will be confiscated and given to the Principal for further action.](#)

MAJOR*: Tobacco/Drugs/Out of Bounds

*Violation of this policy may result in suspension, fines, and/or mandatory smoking cessation classes.

8. Vandalism / Defacement of Property

Students must respect our school and neighborhood. Vandalism or defacement of any school property will not be tolerated. Actions such as writing in school textbooks, writing on desks or walls, carving into woodwork, desks, tables, or walls, breaking/damaging walls or school furniture, and spray-painting (graffiti) are actions of vandalism/defacement. Anyone caught vandalizing the school or local property will be disciplined and required to pay for damages or make restitution. The police will be called if a neighbor's property is affected.

MAJOR: Property Damage/Vandalism

9. Plagiarism and Academic Honesty

Plagiarism or cheating of any kind will not be tolerated. Students who are caught plagiarizing or cheating will receive a zero for the assignment. No make up assignments will be given to recover the zero. If the student plagiarizes or cheats again, the student will fail the course automatically.

MAJOR: Forgery/Plagiarism

10. Internet Acceptable Use Policy

Technology is a vehicle to access the most current and extensive sources of information which will prepare students for 21st Century careers. As such, school internet access is a privilege for educational purposes only and will be revoked if any of the following conditions occur:

Students will not access or create offensive, profane, or pornographic files, plagiarize works or violate copyrights or trademarks, damage, alter, or modify hardware or software or attempt to bypass computer security, nor will they engage in behaviors that constitute cyber bullying.

Internet access has been provided to teachers and students as an educational tool and should be used as such. The use of the internet for illegal, commercial, or unethical actions is strictly prohibited. All illegal activities such as transmission of any material in violation of any U.S. or state regulations are prohibited. This includes, but is not limited to; copyrighted material, threatening or obscene material, or material protected by trade secret.

Students will not use their social media accounts in school or outside of school to target staff, peers or other members of the Beacon community. Students are a reflection of the school, and disciplinary action will be taken for any occurrences of inappropriate online behavior.

Beacon students will be utilizing the internet to create an online portfolio for graduation requirements and are reminded that this is not a Beacon *Tumblr* (*social media*) page. What you place on this page is open for public viewing and represents not just yourself but Beacon as well. [The contents of your portfolio should be at a professional level, preparing you for life after Beacon.](#)

MAJOR*: Technology Violation

*Bullying can and does happen electronically and we refer students to the Bullying Policy for further definition and actions that can be taken by the school for such acts.

Rules Against Injury to Others (Category 2)

1. Sexual Harassment

Sexual harassment is against the law and will not be tolerated. A student will not use words, pictures, objects, gestures, or other actions relating to sexual activity or a person's gender as defined by the law that violates the rights of any person. Sexual harassment will be reported immediately to an administrative team member of the school.

MAJOR: Harassment/Sexual Misconduct

2. Theft/Possession of Stolen Property

A student will not, without permission of the owner or custodian of the property, take property nor have in his/her possession any property that does not belong to him/her.

MAJOR: Theft

3. Bullying

Bullying is clearly a violation of RI State law. Please see the bullying policy at the conclusion of this document.

MAJOR: Bullying

4. Creation of an Unsafe Environment

Students who pull fire alarms, set off fire extinguishers, smoke [or vape](#) inside of the school building, incite others to unruly behavior, misbehave on busses, cause disruption during fire drills/evacuation drills, leave

school grounds without permission and engage in other destabilizing behaviors create an unsafe environment and are subject to disciplinary action.

MAJOR: (Several may apply)

Rules Covering Major Offenses (Category 3)

The school has ZERO tolerance regarding the possession of weapons, fireworks, alcohol and/or drugs, and the use of violence. Students who commit any of these Category 3 offenses will be referred to the Compliance Committee and/or the Board of Trustees.

1. Weapons

Any student found to be in possession of a weapon will be suspended and referred to the Compliance Committee for a hearing, which may result in exit from our school for up to 180 days or the duration of the school year in accordance with the Rhode Island State Law.

MAJOR: Weapons

2. Alcohol and Drugs

Alcohol and Drug use is strictly prohibited. A student will not possess, use, offer to buy or sell controlled substances, dangerous drugs, prescription drugs, counterfeit drugs, intoxicating substances, or alcohol. Any student who possesses drugs or alcohol will be automatically suspended and referred to the Compliance Committee.

MAJOR: Alcohol/Drugs

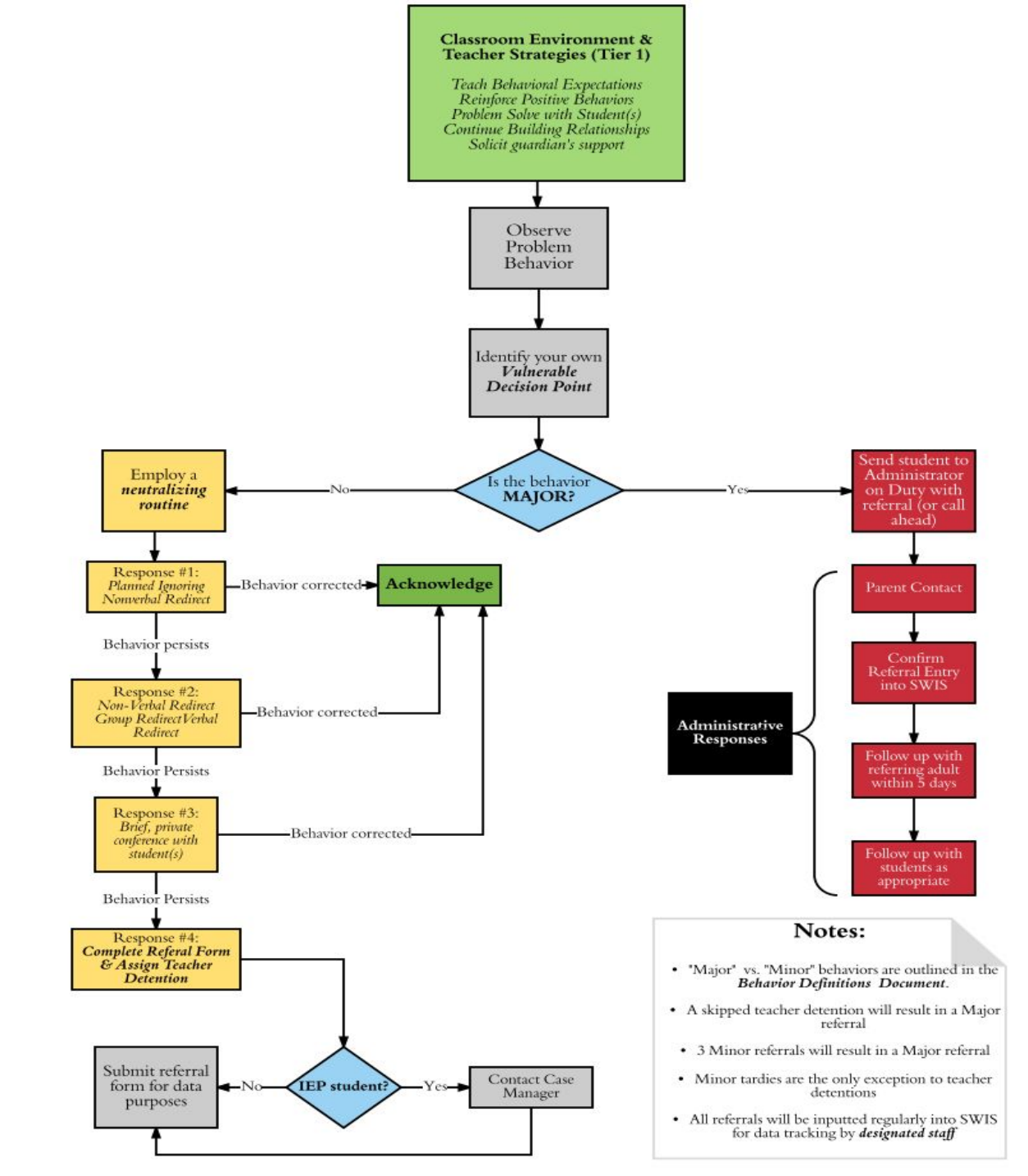
Students who are required to take prescription drugs during school hours must present a copy of the prescription showing required times and dosages to the school nurse. All prescriptions must be kept in the nurse's office and taken in the presence of the school nurse.

3. Physical Violence

Any student who assaults another student or staff member will be automatically suspended and referred to the Compliance Committee.

MAJOR: Fighting

School Responses to Rule Violations



If a student is sent to in-house suspension, all student activities will be conducted within the in-house suspension room until 2:45 PM. Teachers are responsible for supplying work to the student or the Principal at the time of dismissal from class. The student is responsible for doing their classwork/schoolwork while in the in-house suspension room.

Parents of students with special needs should refer to their procedural safeguards handout for more information on interventions and discipline.

Outline of Due Process Rights for Students and their Parents and/or Guardians

In cases of suspension from school and possible exclusion from school, the process is:

- The school gives notice in writing to the parent(s) and/or guardian(s) describing the problem, the length of suspension, and instructions to appear at the date and time of a reinstatement hearing/appointment.
- At this hearing/appointment, the student and parent(s) and/or guardian(s) have the right to be heard.
- Parent(s) and/or guardian(s) may bring an advocate with them for support.
- If the parent(s) and/or guardian(s) disagrees with the decision of the Principal, Superintendent or Compliance Committee, a letter of appeal must be written to the chair of the Board of Trustees within ten (10) days of the decision. The board, or a special subcommittee of the board, will meet within ten (10) days of their receipt of the appeal letter and hold a separate hearing where the due process rights outlined above will remain in force.

Bullying Prohibition and Prevention -Teachers

The State of Rhode Island and the Dept. of Education have taken a strong stand against bullying in our schools. Beacon Charter High School for the Arts strongly supports their policies and is working to eliminate bullying and harassment in all forms within our school in order to provide a safe and secure school climate so that all students may learn.

As part of the Anti-Bullying Education Program at Beacon Charter High School for the Arts it is important that all members of our community are aware of school policies including what bullying looks like. All students and their parents/guardians should read and sign the policies below.

Beacon Charter High School for the Arts' Statement of Non-Discrimination

No person shall be excluded from participation in, be denied the benefits of, or be subjected to discrimination in any educational program or activity available in school on the basis of race, color, religion, ancestry, national origin, gender, sexual orientation, gender identity and expression or mental, physical, or sensory disability, intellectual ability or by any other distinguishing characteristic.

Bullying Prohibition and Prevention Policy

Updated: 7.25.19

Bullying is a form of harassment. For the purposes of this policy, bullying is defined as:

The repeated intimidation of others by the real or threatened infliction of physical, verbal, written, electronically transmitted, or emotional abuse, or through attacks on the property of another. It may include, but not be limited to actions such as verbal taunts, name-calling, and put downs, including ethnically-based or gender-based verbal put downs, and extortion of money or possessions.

Such conduct is disruptive of the educational process and therefore, bullying is unacceptable behavior at Beacon Charter High School for the Arts and is prohibited.

Students who engage in any act of bullying while at school, at any school function, in connection to or with any school sponsored activity or event, or while in route to or from school are subject to disciplinary action, up to and including suspension and expulsion. Law enforcement officials shall be notified of bullying incidents, as required by law.

There are many ways to bully someone. A bully wants to hurt the other person (it's not an accident). Bullying is UNFAIR. There are four main types of bullying:

1. **Physical bullying** when someone hits, shoves, kicks, spits or beats up on others, including damaging or stealing another student's property.
2. **Verbal bullying** name-calling, mocking, hurtful teasing, using comments of a sexual nature, humiliating or threatening someone, making people do things they don't want to do.
3. **Social bullying** excluding others from the group, spreading gossip or rumors about others, making others look foolish, making sure others do not spend time with a certain person.
4. **Electronic/Cyber bullying** using computer, e-mail, social media, instant messaging, and phone or cellular phone text messages to: threaten or hurt someone's feelings, single out, embarrass or make someone look bad, spread rumors or reveal secrets about someone.

To help maintain Beacon's open and supportive school culture and climate, all teachers and students who witness or have knowledge of bullying are required to report the incidence to an administrative team member.

Retaliation or threat of retaliation, in any form, designed to intimidate the victim of bullying, those who are witness to bullying, or those investigating an incident of bullying, shall not be tolerated. Retaliation or threat of retaliation will result in the imposition of discipline in accordance with a Category 2 offense in the code of conduct.

Appendix

Behavior Definitions	
Minor	Definition
Defiance/Disrespect/ Noncompliance	Failure to respond to adult requests (verbally or nonverbally).
Disruption	Brief interruption to class, education or activity.
Dress Code	Students violate dress code in a way that can be immediately corrected (e.g. wearing hats, sunglasses, blankets, sleeveless shirts, images that promote alcohol, drugs, cigarettes, illegal activity, otherwise inappropriate for a school setting).
Inappropriate Language	Language or topics (verbal or written) which make others uncomfortable, and are not appropriate for the school/setting they are in. Not directed at someone specifically, non “aggressive.”
Physical Contact	Physical horseplay, brief displays of affection (e.g. hugging, a ‘peck’, hand-holding etc.), or non-aggressive touching .
Property Misuse	Student engages in misuse of property that does not lead to injury or property damage .
Tardy	Student arrives between 5-10 minutes late to class after the start of block, without a pass . *Classroom tardies must always be documented with a referral
Technology Violations	Unauthorized/inappropriate use of technology (school or personal) including cell phones, mp3 players, computers, cameras, tablets etc.

Major	Definition
Abusive language/profanity	Aggressive language (verbal or written), racial/ethnic/religious slurs, homophobic language. Offensive language or topics that are directed at another person/group of people .
Alcohol	Student is in possession of, using, or under the influence of alcohol on school property or during a school-sponsored event.
Arson	To unlawfully and intentionally damage or attempt/plan to damage any real or personal property by fire or incendiary devices .
Bomb Threat	Any threat, verbal, written or electronic by a person to bomb or use other substances or devices for the purpose of exploding , burning, or causing damage to a school building or school property, or to harm students/staff.
Bullying	Sustained, repeated, or excessive attacks (verbal, nonverbal, or electronic) directed toward a student(s) or adult.
Cheating	Student has copied the work of another or has used dishonest means in order to gain an academic advantage.
Combustibles	Student is in possession of a combustible substance/ object(s) readily capable of causing bodily harm and/or property damage (matches, lighters, fireworks, gasoline, lighter fluid).
Defiance/ Insubordination	Refusing the directive of a teacher, administrator or other adult (verbally or nonverbally).
Disruption	Prolonged and/or continual interruption to class, education, or activity.
Dress Code	Repeated violations of dress code (e.g. wearing hats, sunglasses, blankets, sleeveless shirts, images that promote alcohol, drugs, cigarettes, illegal activity, or gang affiliation, otherwise inappropriate for a school setting). Cannot be immediately corrected .
Drugs	Student is in possession of, using, or under the influence of illegal drugs/paraphernalia or drug imitations (e.g. bath salts, salvia, etc) on school property or during a school-sponsored event.
False Alarm	Deliberate attempt to create a false emergency situation leading to building evacuation/lockdown (e.g. pulling a fire alarm, yelling “fire” in a hallway, etc.)
Fighting	Actions involving serious physical contact or aggression where injury may occur (e.g. Hitting, punching, kicking, shoving, slapping,

	hair-pulling, slapping, etc.). Any physical contact directed at an adult.
Forgery/ Plagiarism	Student has signed a person's name without the person's permission. Student has deliberately submitted the work of another as their own.
Harassment	Student delivers disrespectful messages (verbal, nonverbal, or electronic) to another person that includes threats and intimidation, obscene gestures, pictures, or written notes. Disrespectful messages include negative comments about race, gender, age, and/or ethnic background.
Inappropriate Displays of Affection/Sexual Misconduct	Any act of a sexual nature which substantially disrupts the orderly conduct of the school day (or function). Includes: sexual activity, indecent exposure, and displays of pornographic imagery.
Inappropriate Location/ Out of Bounds	Student is in an area of the school/campus that is explicitly "off limits" to students . Includes: basement, roof, unattended classrooms, the elevator (without permission), back stairwell, loading dock, middle school building, etc.
Property Damage/ Vandalism	Deliberately damages or impairs the usefulness of property (e.g. graffiti, destruction of furniture or equipment).
Skipped Class	Student leaves or fails to attend class without permission.
Tardy	Student repeatedly arrives late to class/ arrives, without a pass, more than 10 minutes after the start of the block.
Technology Violations	Posting images, footage, etc. of others (students or adults) without permission. Willfully damaging electronic devices. Visiting sites that are not school appropriate. Unauthorized access to others' accounts and information.
Theft	Student has, without authorization , taken the property of another with intent to permanently deprive the owner of the property.
Tobacco	Student is in possession of, using, or under the influence of tobacco, vaporizer pens, electronic cigarettes, hookah pens, etc. on school property or during a school-sponsored event.
Truancy	Student is deliberately and/or chronically absent without proper documentation or authorization.
Weapons	Student is in possession of knives or guns (real or replica), or other objects readily capable of causing bodily harm.

Parent/Guardian Code of Conduct and Anti-Bullying Pledge

As parents/guardians, we agree to join together with the Beacon Charter High School for the Arts community to uphold its Statement of Non-Discrimination and the State of Rhode Island's safe schools legislation in order to stamp out bullying at our school.

By signing this pledge, we agree to:

- Keep ourselves and our children informed and aware of school bullying policies and behaviors that are considered bullying and harassment.
- Work in partnership with Beacon Charter High School for the Arts to encourage positive behavior, valuing differences and promoting sensitivity to others.
- Discuss regularly with our children their feelings about school work, friendships and relationships.
- Inform teachers of changes in our children's behavior or circumstances at home that may change a child's behavior at school.
- Alert Beacon Charter High School for the Arts staff if any bullying has occurred.

Parent/Guardian's Signature _____ Date _____

Student Code of Conduct and Anti-Bullying Pledge

I agree to join together with the Beacon Charter High School for the Arts community to uphold its Statement of Non-Discrimination and the State of Rhode Island's safe schools legislation in order to stamp out bullying at our school.

By signing this pledge, I agree to:

- Value student differences and treat others with respect.
- Not become involved in bullying incidents or be a bully.
- Be aware of Beacon Charter High School for the Arts policies and support system with regard to bullying.
- Report honestly and immediately all incidents of bullying to a faculty member.
- Be alert in places around the school where there is less adult supervision such as bathrooms, hallways, and stairwells.
- Support students who have been or are subjected to bullying.
- Talk to teachers and parents about concerns and issues regarding bullying.
- Work with other students and faculty to help the school deal with bullying effectively.
- Encourage teachers to discuss bullying in the classroom.
- Provide a good role model for younger students and support them if bullying occurs.
- I also acknowledge that whether I am being a bully or see someone being bullied, I have a responsibility to do something.

Student's Signature _____ Date _____

**Beacon Charter High School for Arts
Code of Conduct
Acknowledgement Page**

I have read, understand, and agree to abide by the Beacon Charter High School for the Arts Code of Conduct.

Student Name

Date

Student Signature

Parent Signature

Date