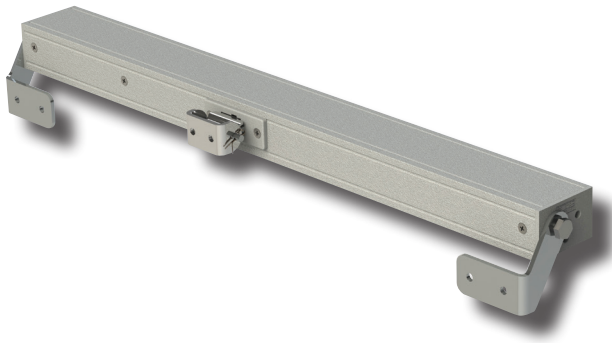




SECO N 24 25 | General Information

The SECO N 24 25 chain actuator is a high quality, cost effective chain drive designed and manufactured by SE Controls and tested to EN 61000-6-1 & 2.

Electronically defined closing force ensures a tight close on each operation and the SECO N24 25 is available in standard or bespoke body lengths addition to stroke finish and flex lengths/type variations.



SECO N 24 25 | Features

- Standard Finish - RAL9006 (Silver Grey)
- Slim and distinctive grooved enclosure
- Flexible bracket range to suit all vent applications
- Soft close available via adjustable zero point setting
- Seal Relief, programable up to 20mm
- Virtually silent operation with selectable speed control (<4 dB in test chamber conditions with background at 35dB)
- Warranty - 2 years/15,000 cycles
- BMS simulation tested to 500,000 cycles
- Intelligent variants to follow
- Optional volt free signal output

Phone:
(07) 3265 5771

Fax:
(07) 3265 5662

Web:
www.uniquewindowservices.com

SECO N24 25 | Specifications

VOLTAGE	24v DC
LOAD CAPACITY - PUSH/PULL	250N/250N
LOCK FORCE	4000N
CURRENT UNDER LOAD	0.5A max.
STROKE LENGTH	100mm<350mm
STROKE SPEED AT FULL LOAD	5mm/sec
OPERATING TEMPERATURE RANGE	-5°C to 60°C
LIMIT SWITCH	In Built
IP GRADE	IP20
ELECTRIC OVERLOAD CUT OFF	In Built



SECO N24 25 | Specification Text

Awning sashes to be electronically operated by 'SECO N 24 25', 24vDC programmable electric chain winder from Unique Window Services (07-3265-5771).

Electric chain winders to have project specific requirements set prior to installation which can include, but not are limited to: Speed, Operational Stroke, Seal Relief, Soft Close and <4dB rating.

Electric chain winder to be certified and warranted to at least 15,000 strokes (noted through operational frequency logging), include project specific mounting brackets and Stainless Steel chain.

UNIQUE
WINDOW SERVICES

Phone:
(07) 3265 5771

Fax:
(07) 3265 5662

Web:
www.uniquewindowservices.com