



**Educational
Policy
Institute**

The Educational Policy Institute (EPI) works with colleges and universities, school districts, government agencies, and philanthropic organizations to learn more about student success and improving educational opportunities at secondary and postsecondary levels. Our particular expertise in student retention support and program evaluation can help institutions and organizations strategize for continuous improvement.

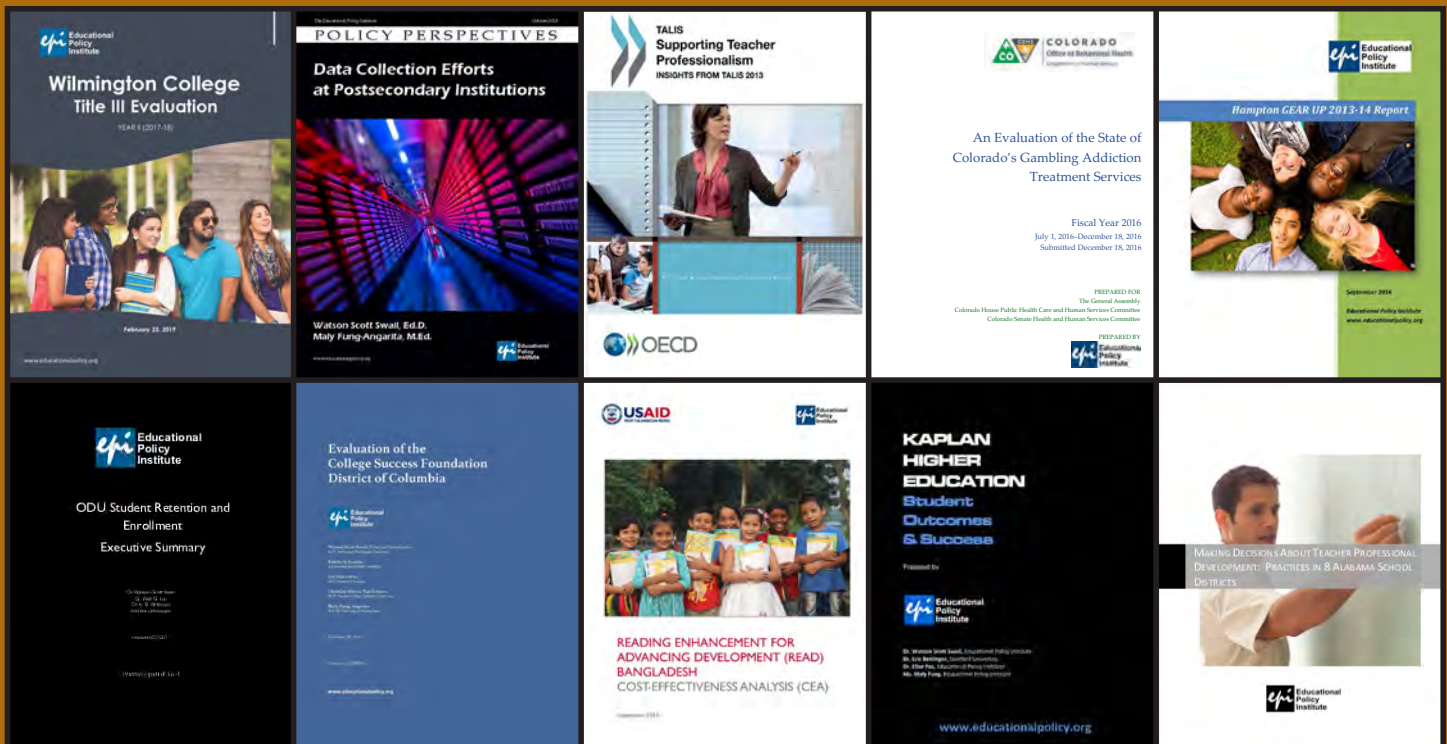
**RETENTION IQ • PROGRAM EVALUATION
ENROLLMENT MANAGEMENT • POLICY ANALYSIS
RESEARCH DESIGN • PREDICTIVE ANALYTICS
DATA WAREHOUSING • TECHNICAL ASSISTANCE
PROFESSIONAL DEVELOPMENT • STRATEGIC PLANNING**

A large group of graduates in black and gold gowns and caps, seen from behind, at a graduation ceremony.

www.educationalpolicy.org

CURRENT AND RECENT PROJECTS

- Perkins Comprehensive Local Needs Assessment (CLNA) — [Valencia College, FL \(2019-20\)](#)
- Change Management Services — [Seattle Colleges, WA \(2019\)](#)
- Federal Grant Writing — [Minnesota Office of Higher Education \(2019\)](#)
- Evaluation of Colorado's Gambling Addiction Services — [Colorado Office of Behavior Health, CO \(2016\)](#)
- AVID Peer Tutoring Evaluation — [AVID Center, San Diego, CA \(2018-19\)](#)
- Title III Evaluation — [Santa Fe College FL \(2018-2023\)](#)
- Title V Evaluation — [Bergen Community College, NJ \(2017-2022\)](#)
- Title III Evaluation — [Wilmington College, OH \(2017-2022\)](#)
- Evaluation of the College Success Foundation — [District of Columbia, Bill & Melinda Gates Foundation \(2015\)](#)
- SAVE the Children Bangladesh Cost Effective Analysis — [SAVE the Children, International \(2014-16\)](#)
- OSEP Personnel Development Program (PDP) Data Collection System, and Scholar Data Report (SDR) and Service Obligations Tracking System (SOTS) — [Office of Special Education Programs \(OSEP\), U. S. Department of Education, Washington, DC \(2012-2017\)](#)
- Training Cost Comparison Study of Anesthetists in the UK, South Africa, and Zambia — [Tropical Health & Education Trust \(THET\) \(2015-18\)](#)
- Evaluation of the Arizona State University (ASU) Preparatory Program Investment in Innovation (i3) Grant — [Arizona State University, AZ \(2014-2019\)](#)
- Thematic Report on Teaching and Learning via the Teaching and Learning International Survey (TALIS) — [OECD \(2015\)](#)
- Academic Excellence through STEM Innovation, A Race to the Top (RTTT) Grant — [St. Vrain Valley Schools, CO \(2013-2017\)](#)
- Magnet Schools Assistance Program (MSAP) Compliance Monitoring — [US Department of Education, Washington, DC \(2011-2014\)](#)
- Assessment of Chancellor's Student Success Plan — [Shawnee State University, OH \(2012-13\)](#)
- Evaluation for Safe Schools/Healthy Students Grant, Lawrence County School District — [Monticello, MS \(2009-2013\)](#)
- Miami University of Ohio Teaching American History (TAH) Evaluation — [Miami, OH \(2010-2015\)](#)
- Consulting Services to Assess Demographic Trends in the Commonwealth of Virginia in Relationship to Student Enrollment and Retention — [Old Dominion University, Norfolk, VA \(2012-13\)](#)
- Assessing Program Performance and Planning Next Steps for the Title VI UISFL, BIE and NRC Programs — [US Department of Education, Washington, DC \(2011-12\)](#)
- Evaluation of Title III Strengthening Institutions Grant — [Ohio Dominican University, Columbus, OH \(2008-2013\)](#)
- Evaluation of the Pittsburgh Science and Technology Academy — [Pittsburgh Public Schools, Pittsburgh, PA \(2009-11\)](#)
- Texas High School Project Evaluation: Expansion of Scope — [Texas Education Agency \(TEA\), Austin, TX \(2009\)](#)
- Study of District Practices in the Evaluation of Professional Development Initiatives in the State of Alabama — [Southeastern Regional Educational Laboratory/Alabama State Department of Education, Montgomery, AL \(2009\)](#)
- Statewide Evaluation of the Iowa Reading First Program — [Iowa Department of Education, Iowa City, IA \(2007-08\)](#)
- Development of Evaluation Framework for the Teaching with Primary Sources Program — [The Library of Congress \(2008-10\)](#)
- The Role of College Access Programs in College Completion — [TG Public Benefit Grant, Round Rock, TX \(2010-11\)](#)
- Evaluation of the Teacher Immersion Residency Teacher Quality Partnership Grant — [Old Dominion University, Norfolk, Virginia \(2009-2013\)](#)
- Evaluation of the European Union Centres Programme in the Industrialised Countries — [The Evaluation Partnership Limited/The European Union \(2010\)](#)



WHAT WE DO

The **Educational Policy Institute**, a Virginia-based educational research center and SWaM certified agency, federal SBA, and has a history of breadth in high-level research, evaluation, and policy work. Here are the four major areas where we can help you.

RETENTION IQ

EPI has extensive knowledge about why students leave college and what institutions can do to counteract these issues. We will conduct an institutional audit of your institution's policies and practices and prepare a predictive analytical report that will provide the foundation for a strategic retention and enrollment plan to ameliorate student departure and increase your retention, persistence, and graduation rates while maximizing efficiencies and net revenues.

PROGRAM EVALUATION

EPI conducts evaluations of programs at both the K-12 and postsecondary levels. Our evaluation work includes evaluation design, implementation, analysis, and includes the development and administration of surveys, interviews, and focus groups. EPI's work in this field includes both formative and summative evaluations, including impact evaluations to determine the utility of programs and strategies on student learning and progress. EPI has conducted evaluations of several federally-funded programs, including GEAR UP, Race to the Top, i3, Teaching American History, Safe Schools/Healthy Students, Title III Strengthening Institutions, and Title V.

POLICY ANALYSIS

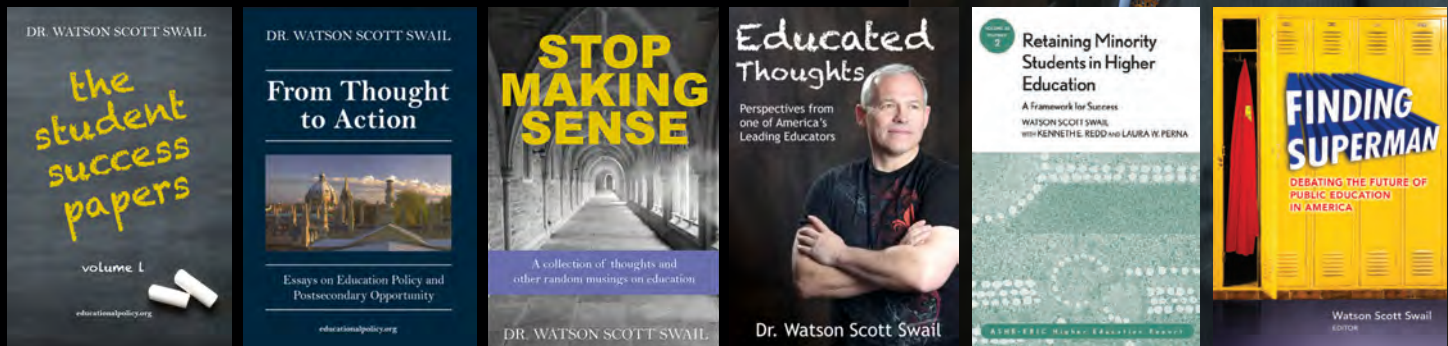
EPI conducts policy and trend analyses on a variety of educational issues related to educational preparation, matriculation to postsecondary studies, and postsecondary success. EPI policy briefs address issues such as federal and state/provincial policies and institutional/school policies and practices. EPI regularly publishes **EPIGraph**, providing regular insight into critical educational issues.

RESEARCH DESIGN AND MANAGEMENT

EPI designs and directs small- and large-scale research projects to answer questions that help us better understand the education system, how students learn, and how we can improve systems and strategies to improve the education process. This work, conducted for philanthropies, state/provincial agencies, federal governments, and organizations, is done to expand our knowledge through broad dissemination. EPI's work in this area includes the design and implementation of experimental and non-experimental studies, formative and summative research, survey development, site-based research, including focus groups, interviews, and document retrieval/review, and data collection and analysis.

EPI President Watson Scott Swail, Ed.D., is widely respected in the area of college opportunity research and education futures. Dr. Swail is published extensively in national journals and publications. Recent publications include *The Student Success Papers* (2019), *From Thought to Action* (2019), *Stop Making Sense: A collection of thoughts and other random musings on education* (2018); *Educated Thoughts: Perspectives of one of America's leading educators* (2015); *Finding Superman: Debating the future of public education in America* (2012); and *Retaining Minority Students in Higher Education* (2003). He has been published in *Phi Delta Kappan*, *Change*, *The Chronicle of Higher Education*, and writes EPI's **The Swail Letter** on a regular basis, which is also available as an iTunes and SoundCloud podcast.

Prior to establishing EPI, Swail served as the Founding Director of The Pell Institute; Vice President of the Council for Opportunity in Education; Senior Policy Analyst with SRI International; and Associate Director for Policy Analysis with The College Board. He is a former middle school teacher in Winnipeg, Manitoba, and Hampton, Virginia. Dr. Swail received his Doctorate in Educational Policy & Higher Education Administration from The George Washington University, a M.Sc. from Old Dominion University, and a B.Ed. from the University of Manitoba.



Speaking Appearances and Workshops: info@educationalpolicy.org

**Student Retention & Success
Program Evaluation
Research Design
Policy Analysis**