

# DXXX

## Explosion-Proof Dome Network Camera

### Description

The SPECTRUM D-Series is a cFmus Class I/II/III, Division 1 (Groups: B, C, D, E, F, G) and IECEx & ATEX Zone 1/21 (IIB+H2/IIIC) camera system proudly designed and manufactured in the USA to exceed the highest global industry standards for safe operation in hazardous or potentially combustible environments and in the most extreme weather conditions.

The SPECTRUM D-Series utilizes an industry first patented multi-chambered enclosure design, with an explosion proof bulkhead used between chambers with each bulkhead including access ports to allow electrical/network connections to be safely passed through. The SPECTRUM D-Series is available in both corrosion resistant marine-grade aluminum or electro-polished 316L stainless steel with an IP66/67 Type 4X rating for protection against water/dust particles and is certified to withstand temperatures ranging from -20°C to +55°C. The enclosure also features a patented GORE-TEX® Breather Drain membrane system incorporated into the housing design: air within the enclosure is allowed to equalize with the surrounding atmosphere, preventing interior condensation and negating any potential damage to the onboard electronics.

The SPECTRUM D-Series utilizes Power over Ethernet (PoE) for power and network connectivity, providing a flexible low-voltage install solution.

### Key Features

- Certified for Class I/II/III, Division 1, IECEx-ATEX Zone 1/21
- PoE
- Light weight: 17lbs - 63lbs
- Marine-Ready Aluminum or Stainless Steel (316L)
- Patented Technology

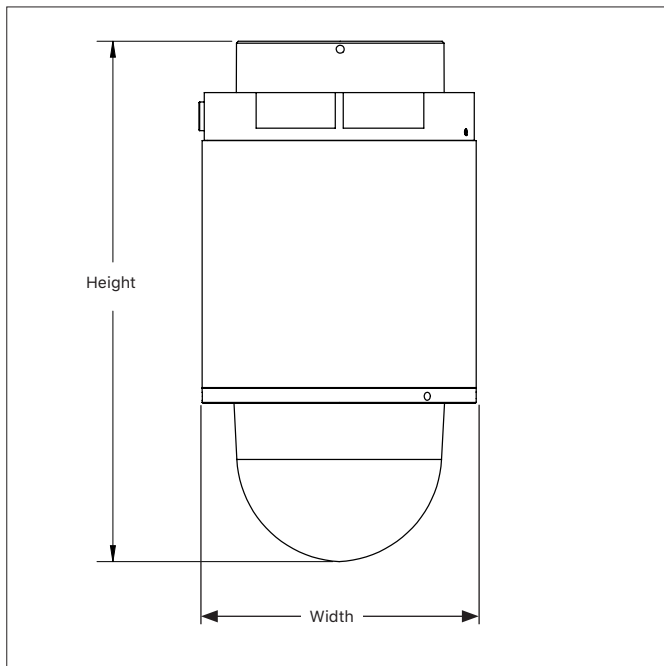


\*Shown with required wall mount, pole mount adapter is optional

General Specifications	
Warranty	3-Year
Casing	<b>A</b> = Marine-ready Aluminum <b>S</b> = 316L Stainless Steel
Certifications	Class I/II/III, Division 1, IECEx-ATEX Zone 1/21
Weight	<b>A</b> = 17 - 37lbs <b>S</b> = 50 -63lbs
Power	Power over Ethernet (PoE)
Temperature Range	-20°C to +55°C
Patents	US Patent 9917428 US Patent D858611

Compatible Accessories	Part Number
Wall Mount	SD-WM
Horizontal Wall Mount	SD-HM
Corner Mount	SD-CM
Vibration Dampening Mount	SD-VM
Pole Mount Adapter	SD-PM
XL Pole Mount Adapter	SD-PM XL
Offshore Kit	SD-OSK
Standoff Mount	SD-SO

\*\*NOTE: GENERAL LABELS ONLY, SEE SPECIFIC MODEL FOR DETAILS.



Dimensions	
Width	8.6"
Height	See Specific Model for Details

**FM APPROVED** **SPECTRUM CAMERA SOLUTIONS** 8935 ALMEDA GENOVA RD. HOUSTON, TEXAS 77075 USA  
 CERT NO. FM17US0156X SPECIALIZING IN EXPLOSION PROOF TECHNOLOGY  
 INPUT: VOLTS, WATTS  
 MODEL NUMBER: DXXX-X-XXXXX SERIAL: XXXXXXXXXXXXX  
 Class I Division 1 Groups B,C,D T6, Type 4X, IP66/67  
 Class II/III, Division 1, Groups E,F,G T6  
 Ta = -20°C to +55°C  
 -WARNINGS:  
 -NOT INCLUDING KETONE OR ESTER ATMOSPHERES  
 -CONDUIT ENTRIES ARE M20 X 1.5  
 -DO NOT OPEN WHEN AN EXPLOSIVE ATMOSPHERE MAY BE PRESENT  
 -INSTALL SEAL AT ENCLOSURE ENTRY  
 US Patent 9917428  
 US Patent D858611

**SPECTRUM CAMERA SOLUTIONS** **FM APPROVED** **MADE IN USA** **CE 2809**  
 SPECIALIZING IN EXPLOSION PROOF TECHNOLOGY 8935 ALMEDA GENOVA RD. HOUSTON, TEXAS 77075 USA  
 CERT NO. FM17US0156X & FM18CA0103X  
**MODEL: DXXX-X-XXXXX SERIAL: XXXXXXXXXXXXX**  
 INPUT: VOLTS, WATTS  
 Class I, Zone 1, AEx/Ex db IIB+H2 T6 Gb Ta = -20°C to +55°C, Type 4X, IP66/67  
 Zone 21, AEx/Ex tb IIIC T85°C Db Ta = -20°C to +55°C, Type 4X, IP66  
**Ex** II 2 G Ex db IIB+H2 T6 Gb Ta = -20°C to +55°C, IP66  
 II 2 D Ex tb IIIC T85°C Db Ta = -20°C to +55°C, IP66  
 CERT NO. FM18ATEX0057X & IECEx FMG 18.0020X  
**WARNING: DO NOT OPEN WHEN ENERGIZED OR WHEN AN EXPLOSIVE ATMOSPHERE MAY BE PRESENT**  
 INSTALL SEAL AT ENCLOSURE ENTRY  
 US Patent 9917428  
 www.spectrumcamera.com US Patent D858611

**SPECTRUM CAMERA SOLUTIONS** **FM APPROVED** **MADE IN USA**  
 SPECIALIZING IN EXPLOSION PROOF TECHNOLOGY 8935 ALMEDA GENOVA RD. HOUSTON, TEXAS 77075 USA  
 No. SÉRIE: XXXX-XX-XX-XXXX  
**FABRICADO NO EUA**  
 CERT NO. NCC 20.0083 X  
 MODELO: D(XXX)-X-XXXX-BD  
 ALIMENTAÇÃO: XX Vdc XX W MAX  
**Segurança** **NCC 20.0083 X**  
 Ex db IIB+H2 T6 Gb Ta = -20°C to +55°C  
 Ex tb IIIC T85°C Db Ta = -20°C to +55°C  
 IP66/67  
**ATENÇÃO:**  
 -ENTRADAS DE CABOS M20 X 1.5  
 -NÃO ABRA ENQUANTO UMA ATMOSFERA EXPLOSIVA PUDE ESTAR PRESENTE  
 -INSTALAR ANEL DE VEDAÇÃO NAS ENTRADAS  
 -NÃO ABRIR QUANDO ENERGIZADO  
 -RISCO POTENCIAL DE CARGA ELETROSTÁTICA - VER INSTRUÇÕES  
 -Patente EUA 9917428  
 -Patente EUA D858611

# D401-X-P5655-E-BD

## Explosion-proof PTZ Camera

Camera	
Image Sensor	1/2.8" progressive scan RGB CMOS
Lens	Varifocal, 4.3-137.6 mm, F1.4 - 4.0 Horizontal field of view: 58.3°- 2.4° Vertical field of view: 35.5°- 1.4° Including EIS, barrel and pincushion distortion correction Autofocus and auto-iris
Day/Night	Automatically removable infrared-cut filter
Minimum Illumination	Color: 0.1 lux at 30 IRE F1.4 B/W: 0.02 lux at 30 IRE F1.4 Color: 0.12 lux at 50 IRE F1.4 B/W: 0.04 lux at 50 IRE F1.4
Shutter Speed	1/66500s to 2s
Pant/Tilt/Zoom	Pan: 360° endless, 0.1°- 350°/s Tilt: 180°, 0.1°- 350°/s Zoom: 32x optical, 12x digital, Total 384x zoom 256 preset positions, nadir flip, limited guard tour, control queue, onscreen directional indicator, set new pan 0°, focus window, focus recall
Video	
Video Compression	H.264 (MPEG-4 Part 10/AVC) Baseline, Main and High Profiles H.265 (MPEG-H Part 2/HEVC) Main Profile Motion JPEG HDTV
Resolution	1920x1080 HDTV 1080p to 320x180
Frame Rate	Up to 60/50 fps (60/50 Hz) in all resolutions
Video Streaming	Multiple, individually configurable streams in H.264, H.265 and Motion JPEG Controllable frame rate and bandwidth Axis Zipstream technology in H.264 and H.265 VBR/MBR H.264/H.265
Image Settings	Compression, saturation, brightness, sharpness, contrast, local contrast, white balance, exposure control, exposure zones Forensic WDR: Up to 120 dB depending on scene, defogging, day/night shift level, tone mapping, fine tuning of low-light behavior, rotation: 0°, 180°, text and image overlay, image freeze on PTZ, electronic image stabilization, scene profiles, 20 individual polygon privacy masks
General	
Casing (X)	A = Marine-Ready Aluminum S = 316L Stainless Steel
Memory	1024 MB RAM, 512 MB Flash
Power	Camera: typical 10.5 W, max 19 W (PoE+ midspan or power supply not included) PoE+ midspan 1-port: 100-240 V AC IEEE 802.3at Type 2 Class 4
Storage	Support for SD/SDHC/SDXC card Support for SD card encryption Support for recording to network-attached storage (NAS) For SD card and NAS
Warranty	3-Year Warranty
Weight	A = 28 lbs S = 55 lbs
Dimensions	Height: 13.2" Width: 8.6"
Patent Notice	Manufactured under United States US Patent: 9917428 US Patent: D858611
Network	
Security	Password protection, IP address filtering, HTTPSa encryption, IEEE 802.1X (EAP-TLS) a network access control, digest authentication, user access log, centralized certificate management, brute force delay protection, signed firmware, secure boot
Supported Protocols	IPv4, IPv6 USGv6, HTTP, HTTPSa, SSL/ TLSa, QoS Layer 3 DiffServ, FTP, SFTP, CIFS/SMB, SMTP, Bonjour, UPnP®, SNMP v1/v2c/v3 (MIB-II), DNS, DynDNS, NTP, RTSP, RTP, SRTP, TCP, UDP, IGMP, RTCP, ICMP, DHCP, ARP, SOCKS, SSH, NTCIP, LLDP, CDP, MQTT



**FM APPROVED** **SPECTRUM CAMERA SOLUTIONS** 8935 ALMEDA GENOA RD. HOUSTON, TEXAS 77075 USA  
SPECIALIZING IN EXPLOSION PROOF TECHNOLOGY

CERT NO. FM17US0156X  
INPUT: 44-57 Vdc 19W  
MODEL NUMBER: D401-X-P5655-E-BD SERIAL: TIME-MO-DY-YEAR  
Class I Division 1 Groups B,C,D T6, Type 4X, IP66  
Class II/III, Division 1, Groups E,F,G T6  
-WARNINGS: Ta = -20°C to +50°C  
-NOT INCLUDING KETONE OR ESTER ATMOSPHERES  
-CONDUIT ENTRIES ARE M20 X 1.5  
-DO NOT OPEN WHEN AN EXPLOSIVE ATMOSPHERE MAY BE PRESENT  
-INSTALL SEAL AT ENCLOSURE ENTRY US Patent 9917428 US Patent D858611

**SPECTRUM CAMERA SOLUTIONS** **FM APPROVED** **MADE IN USA** **CE**  
SPECIALIZING IN EXPLOSION PROOF TECHNOLOGY 8935 ALMEDA GENOA RD. HOUSTON, TEXAS 77075 USA CERT NO. FM17US0156X & FM18CA0103X

**MODEL: D401-X-P5655-E-BD SERIAL: TIME-MO-DY-YEAR**  
INPUT: 44-57 Vdc 19W  
Class I, Zone 1, AEx/Ex db IIB+H2 T6 Gb Ta = -20°C to +50°C, Type 4X, IP66  
Zone 21, AEx/Ex tb IIIC T85°C Db Ta = -20°C to +50°C, Type 4X, IP66  
**Ex** II 2 G Ex db IIB+H2 T6 Gb Ta = -20°C to +50°C, IP66  
**Ex** II 2 D Ex tb IIIC T85°C Db Ta = -20°C to +50°C, IP66  
CERT NO. FM18ATEX0057X & IECEx FMG 18.0020X  
WARNING: DO NOT OPEN WHEN ENERGIZED OR WHEN AN EXPLOSIVE ATMOSPHERE MAY BE PRESENT  
INSTALL SEAL AT ENCLOSURE ENTRY US Patent 9917428 US Patent D858611  
www.spectrumcamera.com

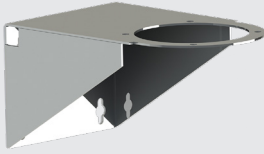
**SPECTRUM CAMERA SOLUTIONS** **FABRICADO NO EUA** CERT NO. NCC 20.0083 X  
SPECIALIZING IN EXPLOSION PROOF TECHNOLOGY 8935 ALMEDA GENOA RD. HOUSTON, TEXAS 77075 USA  
No. SERIE: XXXX-XX-XX-XXXX

**Segurança** NCC 20.0083 X  
**INMETRO** OCP 0034  
Ex db IIB+H2 T6 Gb Ta = -20°C to +50°C  
Ex tb IIIC T85°C Db Ta = -20°C to +50°C  
IP66  
ATENÇÃO:  
- ENTRADAS DE CABOS M20 X 1.5  
- NÃO ABRA ENQUANTO UMA ATMOSFERA EXPLOSIVA PUDE ESTAR PRESENTE  
- INSTALAR ANEL DE VEDAÇÃO NAS ENTRADAS  
- NÃO ABRIR QUANDO ENERGIZADO  
- RISCO POTENCIAL DE CARGA ELETROSTÁTICA - VER INSTRUÇÕES  
-Patente EUA 9917428  
-Patente EUA D858611

# Accessories

Compatible with Explosion-Proof Dome Cameras

## Wall Mount SD-WM

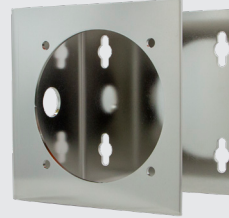


The SD-WM allows for the dome camera to be mounted on walls.

### F1XX-WM

<b>Dimensions</b>	15-1/16 x 9-3/8 x 8-1/4 in
<b>Weight</b>	4.6 kg (10.2 lb)
<b>Maximum Load Tested</b>	1000 kg (2200 lbs)
<b>Material</b>	Electro polished stainless steel

## Horizontal Mount SD-HM

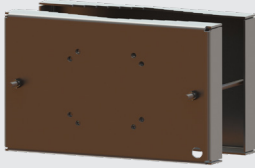


The SD-HM is designed to achieve the best panoramic views on panoramic cameras. It can be mounted horizontal on walls, or pendant style on ceilings.

### SD-PM

<b>Dimensions</b>	9.0 x 9.0 x 6.3 in
<b>Weight</b>	3.2 kg (7 lbs)
<b>Maximum Load Tested</b>	1000 kg (2200 lbs)
<b>Material</b>	Electro polished stainless steel

## XL Pole Mount SD-PM XL

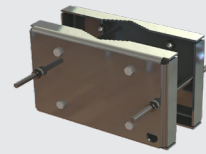


The SD-PM XL pole mount is designed to allow a camera (with the required wall mount) to be mounted on large poles with diameters ranging from 2.25 to 14 inches.

### SD-PM XL

<b>Dimensions</b>	19.125 x 12.82 x 2.25 in
<b>Weight</b>	41 lbs
<b>Maximum Load Tested</b>	1000 kg (2200 lbs)
<b>Material</b>	Electropolished stainless steel

## Pole Mount SD-PM



The SD-PM pole mount is designed to allow a camera (with the required wall mount) to be mounted on poles with diameters ranging from 2 to 8 inches.

### SD-PM

<b>Dimensions</b>	12.50 x 8.50 x 3.38 in
<b>Weight</b>	10.7 kg (23.6 lbs)
<b>Maximum Load Tested</b>	1000 kg (2200 lbs)
<b>Material</b>	Electropolished stainless steel

## Vibration Mount SD-VM

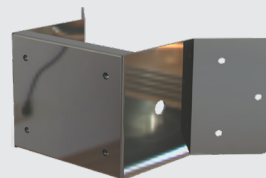


The vibration mount is designed to dampen vibrations and provide stabilization to the camera for clearer image/videos.

### SD-VM

<b>Dimensions</b>	8 x 7-7/8 x 1.9 in
<b>Weight</b>	4.53 kg (10 lbs)
<b>Maximum Load Tested</b>	1000 kg (2200 lb)
<b>Material</b>	Electropolished stainless steel

## Corner Mount SD-CM



The SD-CM Corner Mount allows for the cameras to be mounted on corners.

### SD-CM

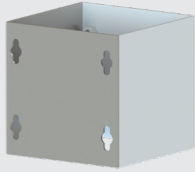
<b>Dimensions</b>	16.33 x 8.27 x 9.92 in
<b>Weight</b>	4.8 kg (10.6 lbs)
<b>Maximum Load Tested</b>	1000 kg (2200 lb)
<b>Material</b>	Electropolished stainless steel

# Accessories

Compatible with Explosion-Proof Dome Cameras

## Standoff Mount

SD-SO



The Standoff mount is designed to mount the camera further away from the mounting surface.

### SD-SO

<b>Dimensions</b>	8-1/4 x 8-1/4 x 9 in
<b>Weight</b>	4.89 kg (10.8 lbs)
<b>Maximum Load Tested</b>	1000 kg (2200 lb)
<b>Material</b>	Electropolished stainless steel

## Reliable Securing Kit

SD-RSK



Anti-Galvanic Corrosion Kit with Secondary Retention Lanyard.

### SD-OSK

<b>Warranty</b>	3-Year
-----------------	--------