

DXXX

Explosion-Proof Dome Network Camera

Description

The SPECTRUM D-Series is a cFmus Class I/II/III, Division 1 (Groups: B, C, D, E, F, G) and IECEx & ATEX Zone 1/21 (IIB+H2/IIIC) camera system proudly designed and manufactured in the USA to exceed the highest global industry standards for safe operation in hazardous or potentially combustible environments and in the most extreme weather conditions.

The SPECTRUM D-Series utilizes an industry first patented multi-chambered enclosure design, with an explosion proof bulkhead used between chambers with each bulkhead including access ports to allow electrical/network connections to be safely passed through. The SPECTRUM D-Series is available in both corrosion resistant marine-grade aluminum or electro-polished 316L stainless steel with an IP66/67 Type 4X rating for protection against water/dust particles and is certified to withstand temperatures ranging from -20°C to +55°C. The enclosure also features a patented GORE-TEX® Breather Drain membrane system incorporated into the housing design: air within the enclosure is allowed to equalize with the surrounding atmosphere, preventing interior condensation and negating any potential damage to the onboard electronics.

The SPECTRUM D-Series utilizes Power over Ethernet (PoE) for power and network connectivity, providing a flexible low-voltage install solution.

Key Features

- Certified for Class I/II/III, Division 1, IECEx-ATEX Zone 1/21
- PoE
- Light weight: 17lbs - 63lbs
- Marine-Ready Aluminum or Stainless Steel (316L)
- Patented Technology

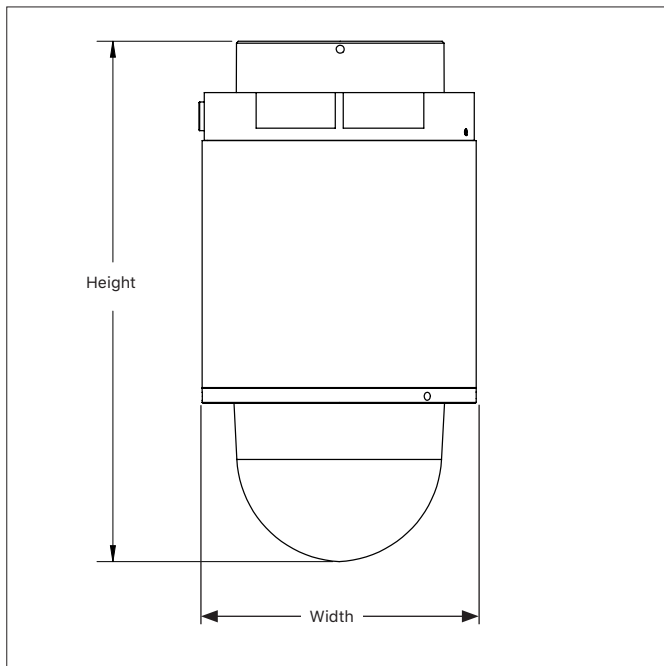


*Shown with required wall mount, pole mount adapter is optional

General Specifications	
Warranty	3-Year
Casing	A = Marine-ready Aluminum S = 316L Stainless Steel
Certifications	Class I/II/III, Division 1, IECEx-ATEX Zone 1/21
Weight	A = 17 - 37lbs S = 50 -63lbs
Power	Power over Ethernet (PoE)
Temperature Range	-20°C to +55°C
Patents	US Patent 9917428 US Patent D858611

Compatible Accessories	Part Number
Wall Mount	SD-WM
Horizontal Wall Mount	SD-HM
Corner Mount	SD-CM
Vibration Dampening Mount	SD-VM
Pole Mount Adapter	SD-PM
XL Pole Mount Adapter	SD-PM XL
Offshore Kit	SD-OSK
Standoff Mount	SD-SO

**NOTE: GENERAL LABELS ONLY, SEE SPECIFIC MODEL FOR DETAILS.



Dimensions	
Width	8.6"
Height	See Specific Model for Details

FM APPROVED **SPECTRUM CAMERA SOLUTIONS** 8935 ALMEDA GENOVA RD. HOUSTON, TEXAS 77075 USA
CERT NO. FM17US0156X SPECIALIZING IN EXPLOSION PROOF TECHNOLOGY

INPUT: VOLTS, WATTS
MODEL NUMBER: DXXX-X-XXXXX SERIAL: XXXXXXXXXXXX
Class I Division 1 Groups B,C,D T6, Type 4X, IP66/67
Class II/III, Division 1, Groups E,F,G T6
Ta = -20°C to +55°C

-WARNINGS:
-NOT INCLUDING KETONE OR ESTER ATMOSPHERES
-CONDUIT ENTRIES ARE M20 X 1.5
-DO NOT OPEN WHEN AN EXPLOSIVE ATMOSPHERE MAY BE PRESENT
-INSTALL SEAL AT ENCLOSURE ENTRY

US Patent 9917428
US Patent D858611

SPECTRUM CAMERA SOLUTIONS **FM APPROVED** **MADE IN USA** **CE 2809**
SPECIALIZING IN EXPLOSION PROOF TECHNOLOGY 8935 ALMEDA GENOVA RD. HOUSTON, TEXAS 77075 USA CERT NO. FM17US0156X & FM18CA0103X

MODEL: DXXX-X-XXXXX SERIAL: XXXXXXXXXXXX
INPUT: VOLTS, WATTS
Class I, Zone 1, AEx/Ex db IIB+H2 T6 Gb Ta = -20°C to +55°C, Type 4X, IP66/67
Zone 21, AEx/Ex tb IIIC T85°C Db Ta = -20°C to +55°C, Type 4X, IP66

Ex II 2 G Ex db IIB+H2 T6 Gb Ta = -20°C to +55°C, IP66
II 2 D Ex tb IIIC T85°C Db Ta = -20°C to +55°C, IP66
CERT NO. FM18ATEX0057X & IECEx FMG 18.0020X

WARNING: DO NOT OPEN WHEN ENERGIZED OR WHEN AN EXPLOSIVE ATMOSPHERE MAY BE PRESENT
INSTALL SEAL AT ENCLOSURE ENTRY

www.spectrumcamera.com US Patent 9917428
US Patent D858611

SPECTRUM CAMERA SOLUTIONS **FM APPROVED** **MADE IN USA**
SPECIALIZING IN EXPLOSION PROOF TECHNOLOGY 8935 ALMEDA GENOVA RD. HOUSTON, TEXAS 77075 USA CERT NO. NCC 20.0083 X
No. SÉRIE: XXXX-XX-XX-XXXX ALIMENTAÇÃO: XX Vdc XX W MAX

Segurança NCC 20.0083 X
Ex db IIB+H2 T6 Gb Ta = -20°C to +55°C
Ex tb IIIC T85°C Db Ta = -20°C to +55°C
IP66/67

ATENÇÃO:
-ENTRADAS DE CABOS M20 X 1.5
-NÃO ABRA ENQUANTO UMA ATMOSFERA EXPLOSIVA PUDE ESTAR PRESENTE
-INSTALAR ANEL DE VEDAÇÃO NAS ENTRADAS
-NÃO ABRIR QUANDO ENERGIZADO
-RISCO POTENCIAL DE CARGA ELETROSTÁTICA - VER INSTRUÇÕES

-Patente EUA 9917428
-Patente EUA D858611

D201-X-Q6075-E-BD

Explosion-proof PTZ Camera

Camera	
Image Sensor	1/2.8" progressive scan CMOS
Lens	4.25-170 mm, F1.6-4.95 Horizontal field of view: 65.1°-2.00° (1080p) Vertical field of view: 39.1°-1.18° (1080p) Auto-focus, auto-iris
Day/Night	Automatically removable infrared-cut filter
Minimum Illumination	Color: 0.1 lux at 30 IRE, F1.6 B/W: 0.002 lux at 30 IRE, F1.6 Color: 0.15 lux at 50 IRE, F1.6 B/W: 0.003 lux at 50 IRE, F1.6
Shutter Speed	1/11000 s to 1/3 s with 50 Hz 1/11000 s to 1/3 s with 60 Hz
Pan, Tilt, Zoom	Pan: 360° endless, 0.05°-450°/s Tilt: 220°, 0.05°-450°/s Zoom: 40x optical, 12x digital, total 480x zoom E-flip, 256 preset positions, tour recording (max 10, max duration 16 minutes each), guard tour (max 100), control queue, on-screen directional indicator, orientation aid PTZ, set new pan 0°, adjustable zoom speed, focus recall
Video	
Video	H.264 (MPEG-4 Part 10/AVC) Baseline, Main and High Profiles H.265 (MPEG-H Part 2/HEVC) Main Profile Motion JPEG
Resolution	HDTV 1080p 1920x1080 to 320x180
Frame Rate	Up to 50/60 fps (50/60 Hz) in HDTV 1080p
Video Streaming	Multiple, individually configurable streams in H.264, H.265 and Motion JPEG Axis Zipstream technology in H.264 and H.265 Controllable frame rate and bandwidth VBR/ABR/MBR H.264/H.265
Image settings	Manual shutter time, compression, color, brightness, sharpness, white balance, exposure control, exposure zones, fine tuning of behavior at low light, rotation: 0°, 180°, text and image overlay, polygon privacy masks, electronic image stabilization (EIS), freeze on PTZ, automatic defog, backlight compensation, scene profiles Wide Dynamic Range (WDR): Up to 120 dB depending on scene, highlight compensation
General	
Casing (X)	A = Marine-ready Aluminum S = 316L Stainless Steel
Memory	1024 MB RAM, 512 MB Flash
Power	Camera: High PoE 57 VDC typical 14W, max 51 W Midspan: Axis High PoE 60 W SFP midspan: 100-240 V AC, max 66.1 W
Storage	Support for SD/SDHC/SDXC card Support for SD card encryption Support for recording to network-attached storage (NAS) For SD card and NAS recommendations see axis.com
Warranty	Spectrum 3-year warranty
Weight	A = 32 lbs S = 62 lbs
Dimensions	Height = 15.82 in Width = 8.60 in
Patent Notice	Manufactured under United States US Patent: 9917428 US Patent: D858611
Network	
Security	Password protection, IP address filtering, HTTPSa encryption, IEEE 802.1x (EAP-TLS)a network access control, digest authentication, user access log, centralized certificate management, brute force delay protection, signed firmware, secure boot, protection of cryptographic keys with FIPS 140-2 certified TPM 2.0 module
Supported Protocols	IPv4, IPv6 USGv6, HTTP, HTTP/2, HTTPSa, SSL/TLSa, QoS Layer 3 DiffServ, FTP, SFTP, CIFS/SMB, SMTP, Bonjour, UPnP®, SNMP v1/v2c/v3 (MIB-II), DNS, DynDNS, NTP, RTSP, RTP, SRTP, TCP, UDP, IGMPv1/v2/v3, RTCP, ICMP, DHCPv4/v6, ARP, SOCKS, SSH, NTCIP, LLDP, MQTT, Syslog



F.M. APPROVED **SPECTRUM CAMERA SOLUTIONS** 8935 ALMEDA GENOA RD. HOUSTON, TEXAS 77075 USA
SPECIALIZING IN EXPLOSION PROOF TECHNOLOGY

CERT NO. FM17US0156X

INPUT: 44-57 Vdc 60W
MODEL NUMBER: D201-X-Q6075-E-BD SERIAL: XXXXXXXXXXXX

Class I Division 1 Groups B,C,D T6, Type 4X, IP66
Class II/III, Division 1, Groups E,F,G T6

-WARNINGS: Ta = -20°C to +50°C
-NOT INCLUDING KETONE OR ESTER ATMOSPHERES
-CONDUIT ENTRIES ARE M20 X 1.5
-DO NOT OPEN WHEN AN EXPLOSIVE ATMOSPHERE MAY BE PRESENT
-INSTALL SEAL AT ENCLOSURE ENTRY

US Patent 9917428
US Patent D858611

SPECTRUM CAMERA SOLUTIONS **F.M. APPROVED** MADE IN USA **CE**
SPECIALIZING IN EXPLOSION PROOF TECHNOLOGY 8935 ALMEDA GENOA RD. HOUSTON, TEXAS 77075 USA

CERT NO. FM17US0156X & FM18CA0103X

MODEL: D201-X-Q6075-E-BD SERIAL: XXXXXXXXXXXX
INPUT: 44-57 Vdc 60W

Class I, Zone 1, AEx/Ex db IIB+H2 T6 Gb Ta = -20°C to +50°C, Type 4X, IP66
Zone 21, AEx/Ex tb IIIC T85°C Db Ta = -20°C to +50°C, Type 4X, IP66

II 2 G Ex db IIB+H2 T6 Gb Ta = -20°C to +50°C, IP66
II 2 D Ex tb IIIC T85°C Db Ta = -20°C to +50°C, IP66
CERT NO. FM18ATEX0057X & IECEx FMG 18.0020X

WARNING: DO NOT OPEN WHEN ENERGIZED OR WHEN AN EXPLOSIVE ATMOSPHERE MAY BE PRESENT
INSTALL SEAL AT ENCLOSURE ENTRY

www.spectrumcamera.com US Patent D858611

SPECTRUM CAMERA SOLUTIONS FABRICADO NO EUA
8935 ALMEDA GENOA RD. HOUSTON, TEXAS 77075 USA

CERT NO. NCC 20.0083 X
MODELO: D201-X-Q6075-E-BD
ALIMENTAÇÃO: 44-57Vdc 60 W

No. SERIE: XXXX-XX-XX-XXXX

Segurança **INMETRO** OCP 0034
Ex db IIB+H2 T6 Gb Ta = -20°C to +50°C, IP66
Ex tb IIIC T85°C Db Ta = -20°C to +50°C, IP66
NCC 20.0083 X

NCC 20.0083 X
Ex db IIB+H2 T6 Gb Ta = -20°C to +50°C
Ex tb IIIC T85°C Db Ta = -20°C to +50°C
IP66

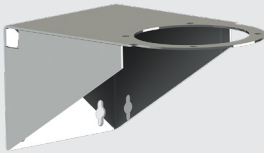
ATENÇÃO:
- ENTRADAS DE CABOS M20 X 1.5
- NÃO ABRA ENQUANTO UMA ATMOSFERA EXPLOSIVA PUDE ESTAR PRESENTE
- INSTALAR ANEL DE VEDAÇÃO NAS ENTRADAS
- NÃO ABRIR QUANDO ENERGIZADO
- RISCO POTENCIAL DE CARGA ELETROSTÁTICA - VER INSTRUÇÕES

-Patente EUA 9917428
-Patente EUA D858611

Accessories

Compatible with Explosion-Proof Dome Cameras

Wall Mount SD-WM

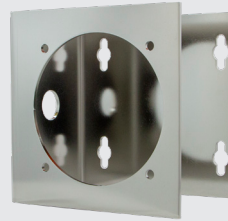


The SD-WM allows for the dome camera to be mounted on walls.

F1XX-WM

Dimensions	15-1/16 x 9-3/8 x 8-1/4 in
Weight	4.6 kg (10.2 lb)
Maximum Load Tested	1000 kg (2200 lbs)
Material	Electro polished stainless steel

Horizontal Mount SD-HM

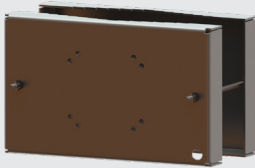


The SD-HM is designed to achieve the best panoramic views on panoramic cameras. It can be mounted horizontal on walls, or pendant style on ceilings.

SD-PM

Dimensions	9.0 x 9.0 x 6.3 in
Weight	3.2 kg (7 lbs)
Maximum Load Tested	1000 kg (2200 lbs)
Material	Electro polished stainless steel

XL Pole Mount SD-PM XL

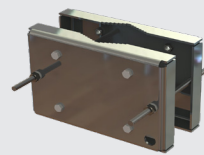


The SD-PM XL pole mount is designed to allow a camera (with the required wall mount) to be mounted on large poles with diameters ranging from 2.25 to 14 inches.

SD-PM XL

Dimensions	19.125 x 12.82 x 2.25 in
Weight	41 lbs
Maximum Load Tested	1000 kg (2200 lbs)
Material	Electropolished stainless steel

Pole Mount SD-PM



The SD-PM pole mount is designed to allow a camera (with the required wall mount) to be mounted on poles with diameters ranging from 2 to 8 inches.

SD-PM

Dimensions	12.50 x 8.50 x 3.38 in
Weight	10.7 kg (23.6 lbs)
Maximum Load Tested	1000 kg (2200 lbs)
Material	Electropolished stainless steel

Vibration Mount SD-VM

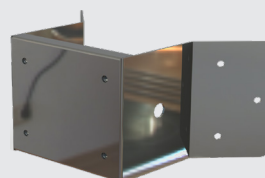


The vibration mount is designed to dampen vibrations and provide stabilization to the camera for clearer image/videos.

SD-VM

Dimensions	8 x 7-7/8 x 1.9 in
Weight	4.53 kg (10 lbs)
Maximum Load Tested	1000 kg (2200 lb)
Material	Electropolished stainless steel

Corner Mount SD-CM



The SD-CM Corner Mount allows for the cameras to be mounted on corners.

SD-CM

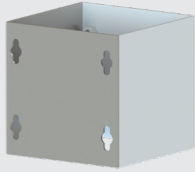
Dimensions	16.33 x 8.27 x 9.92 in
Weight	4.8 kg (10.6 lbs)
Maximum Load Tested	1000 kg (2200 lb)
Material	Electropolished stainless steel

Accessories

Compatible with Explosion-Proof Dome Cameras

Standoff Mount

SD-SO



The Standoff mount is designed to mount the camera further away from the mounting surface.

SD-SO

Dimensions	8-1/4 x 8-1/4 x 9 in
Weight	4.89 kg (10.8 lbs)
Maximum Load Tested	1000 kg (2200 lb)
Material	Electropolished stainless steel

Reliable Securing Kit

SD-RSK



Anti-Galvanic Corrosion Kit with Secondary Retention Lanyard.

SD-OSK

Warranty	3-Year
-----------------	--------