



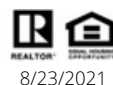
THE SWEETGRASS
BY CRAFTSMAN HOME COMPANY
5 BED, 6 BATH // 4,623 FINISHED SQFT

Craftsman Home Company worked diligently with Rentfrow Design to get "The Sweetgrass" design perfected. Outfitted on acreage property, "The Sweetgrass" is a magnificent modern contemporary ranch-style home complete with a spacious 4 car garage and a garden level, walk-out basement! With an extended covered front porch, you can enjoy the beautiful views of the Rocky Mountains while enjoying a cup of coffee or a glass of wine.

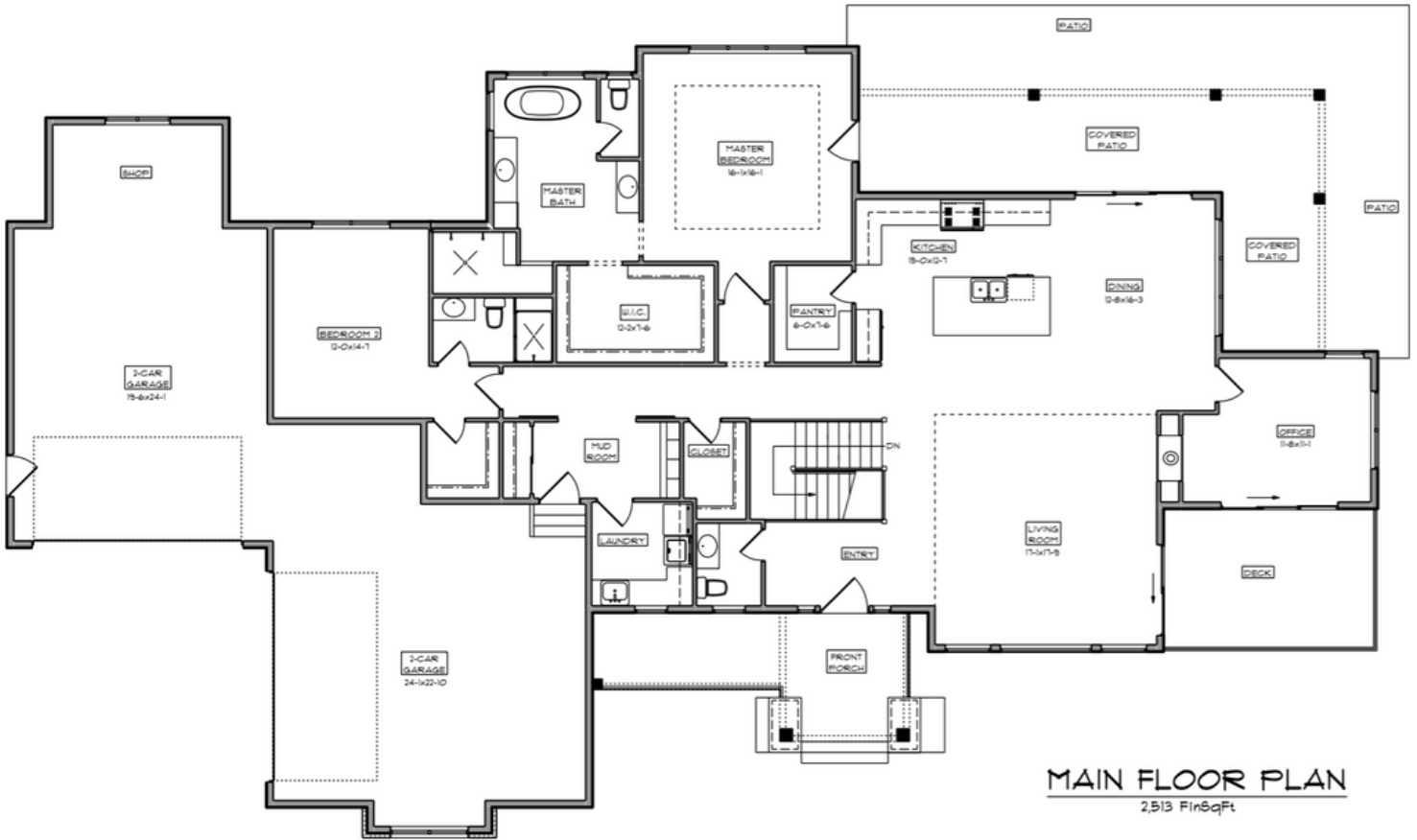
After walking in to "The Sweetgrass", there is an immediate introduction into the living room which has a 14ft ceiling and opens to the kitchen and dining room. Off of the dining room is a devoted office, which has access to the exclusive front deck. Opposite the office entry is an expansive sliding glass door that provides access to the wrap-around covered back patio. Entering into the open-concept kitchen, you will find an expansive kitchen island complete with the kitchen sink. Complete with a walk-in pantry, the home chef will love this kitchen! Down the hall from the kitchen and away from the living room will be the private guest suite, complete with it's own walk-in closet and private restroom. The expansive 4 car garage is just off of the hallway that leads to the guest suite, and also provides the owner with the entry into the mudroom and the laundry room as soon as they enter "The Sweetgrass". Completing the main level is the stunning owner's suite that has access to the wrap-around covered back patio. Entering into the owner's bathroom, you find a 5-piece, spa-like bathroom and access to the expansive walk-in closet.

Entrance to the lower level of "The Sweetgrass" is just off of the living room. Descending the stairs to the garden level, you are immediately placed into the expansive recreation room. This recreation room in "The Sweetgrass" is the perfect space for entertainment, be it a pool table, game room or even a movie room. With an installed wet bar and access to the covered front patio, this recreation room has so many possibilities! Departing from the recreation room, you enter a hallway that puts you to the entry of the 3 bedrooms and a second laundry room. The first bedroom down the hallway is a private bedroom with it's own bathroom and walk-in closet. The next two bedrooms share a Jack & Jill bathroom which have walk-in closets attached.

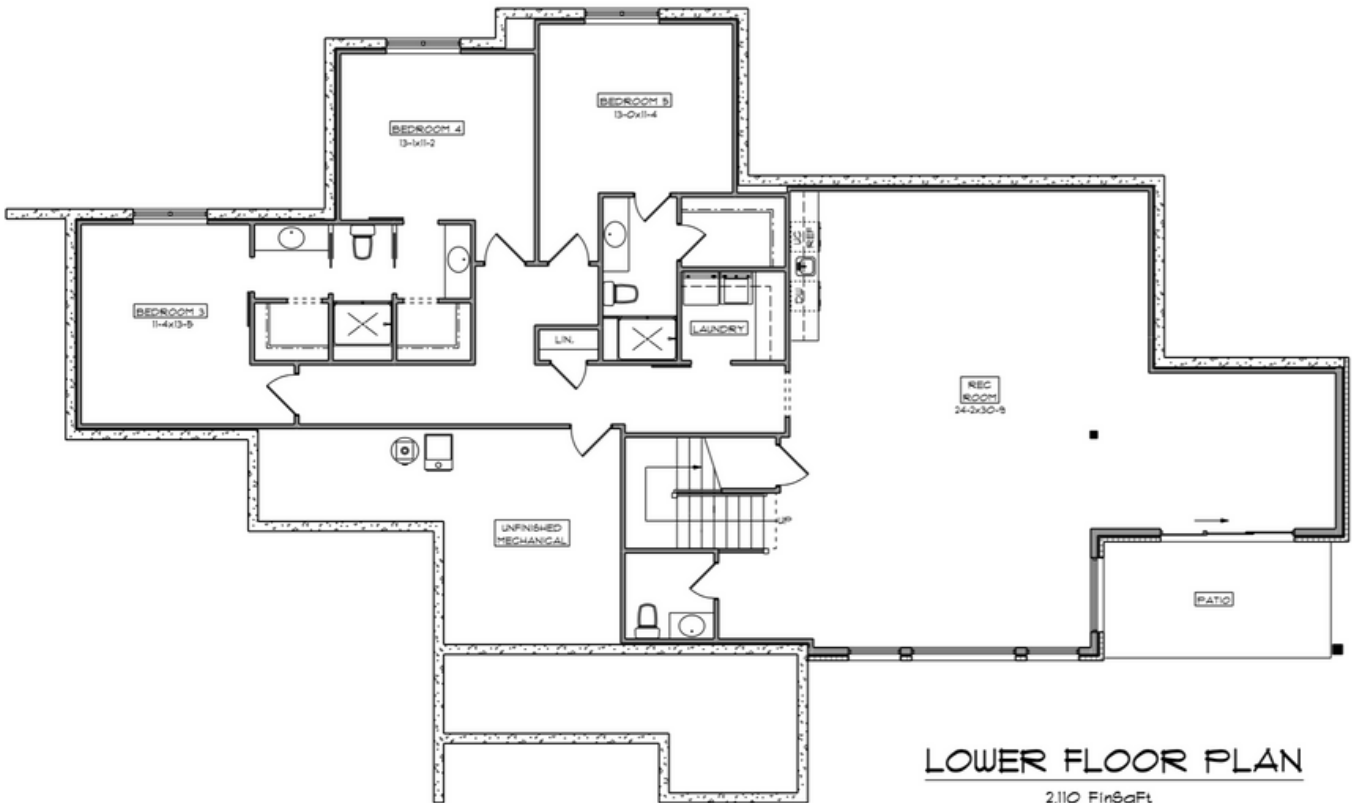
"The Sweetgrass", with it's modern contemporary style and it's ample space for comfortable living, is the perfect forever home! The sustainable, farm-to-table community of Fox Hill is the cherry on top to what "The Sweetgrass" has to offer!



CRAFTSMAN HOME COMPANY AT FOX HILL



MAIN FLOOR PLAN
2,513 FinSqFt



LOWER FLOOR PLAN
2,110 FinSqFt

Exclusively marketed by Paige & Doug McLaughlin
RE/MAX Alliance | 303.620.6677
info@liveinfoxhill.com | www.liveinfoxhill.com

