



# WE PROVIDE SMART SOLUTIONS TO ENHANCE G SUITE COLLABORATION

Who We Work For



## Senior Management

Highlight areas where value can be realized and where ROI can be increased



## Administrators

Identify trends, reallocate resources and allow VitalSigns to do the heavy lifting in the Cloud



## End Users

Avoid downtime and latency to ensure the best possible end user experience



## Security Managers

View Audit Trails and manage who has access to what with role-based delegation

## HOW WE WORK?

In addition to full stack monitoring and reporting, VitalSigns offers powerful administrative features like PowerScripts, PowerScripts are an encrypted library of PowerShell & Cloud Shell commands that can be accessed using Global Address List credentials and run on-demand.

Administrators have full control of permission levels allowing them to easily delegate commands to other users. PowerScripts analyze application performance throughout all Google cloud services and can consolidate all related performance issues into a single actionable notification.

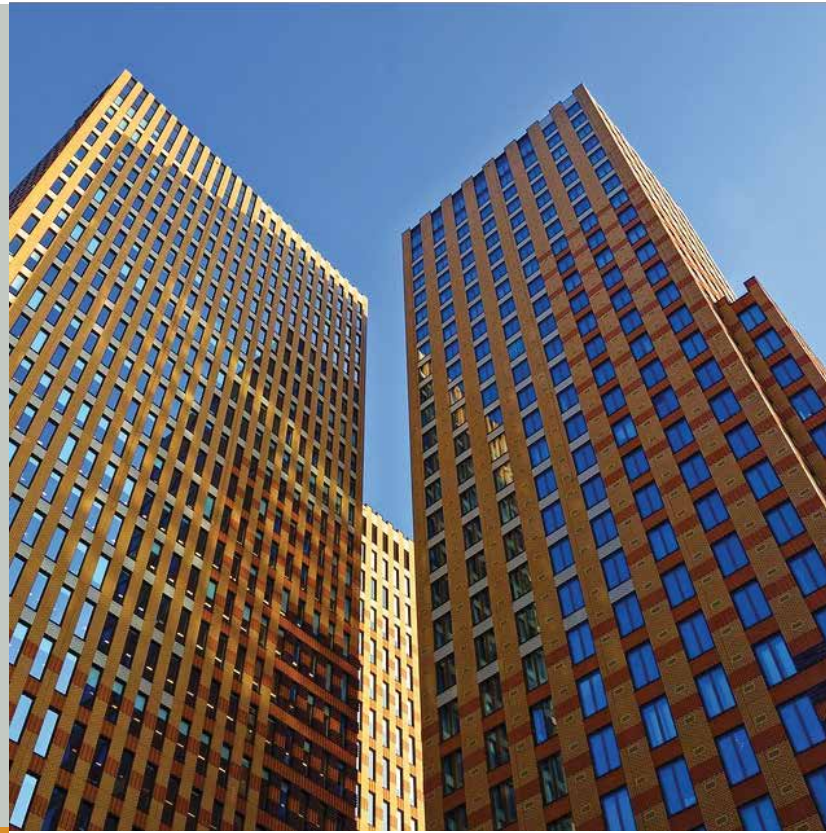
## GET IN TOUCH

3636 North Central Avenue, Suite 610, Phoenix, Arizona 85012  
Sales: +1 (602) 324-2942 | Support: +1 (602) 263-7779  
Email: info@rprwyatt.com

#rprwyatt @rprwyatt

# WE PROVIDE **SMART TOOLS** TO GROW G SUITE COLLABORATION

Optimize performance, ensure availability and realize cost savings in Gmail, Google Drive, Google Docs, Hangouts and other Google Apps.



## PowerScripts

Run PowerShell & Cloud Shell commands with the click of a button and enable junior admins with role-based delegation. View an Audit Log to easily monitor who ran what script, and when.



## Custom Analytics

Gather actionable metrics in real-time, view custom dashboards and detect if issues are anomalies or emerging trends with VitalSigns rich data visualization

WHAT'S  
INSIDE



## End-to-End Monitoring

Gain complete visibility into the performance, uptime and overall health of all cloud-powered applications and assess end-user experience by simulating end user transactions.



## Mail & User

Manage holds, retention rules and get alerted when users are approaching mail quotas. Identify cumulative access size, delegated rights for each user, mailbox type and other critical metrics.

## WHY **VITALSIGNS?**

VitalSigns is a powerful administrative, monitoring and reporting tool for the entire Google Collaborative Suite. Leverage VitalSigns for:

- AWS Integration
- GCP Integration
- Real-time Dashboards
- Custom Alerting & Reporting
- Uptime Monitoring
- Group/Cluster Support
- And more!

## GET IN **TOUCH**

3636 North Central Avenue, Suite 610, Phoenix, Arizona 85012  
Sales: +1 (602) 324-2942 | Support: +1 (602) 263-7779  
Email: [info@rprwyatt.com](mailto:info@rprwyatt.com)

f #rprwyatt

t @rprwyatt