

CENTENNIAL PLACE II

2121 S STATE ST | TACOMA, WA

FOR LEASE

9,671 SF

CLASS A OFFICE SPACE

NEW OWNERSHIP | MAJOR BUILDING UPGRADES UNDERWAY



LEASE INFO

Size: 9,671 SF Office
Lease Rate: \$22.50/RSF
Lease Type: Modified Gross

PROPERTY FEATURES

Convenient central location

Ample surface parking

Underground secure parking

Excellent freeway access (both I-5 and Hwy-16)

Large contiguous floor plates

Energy Star rated



JOHN DEHAN
253.779.2433
jdehan@neilwalter.com

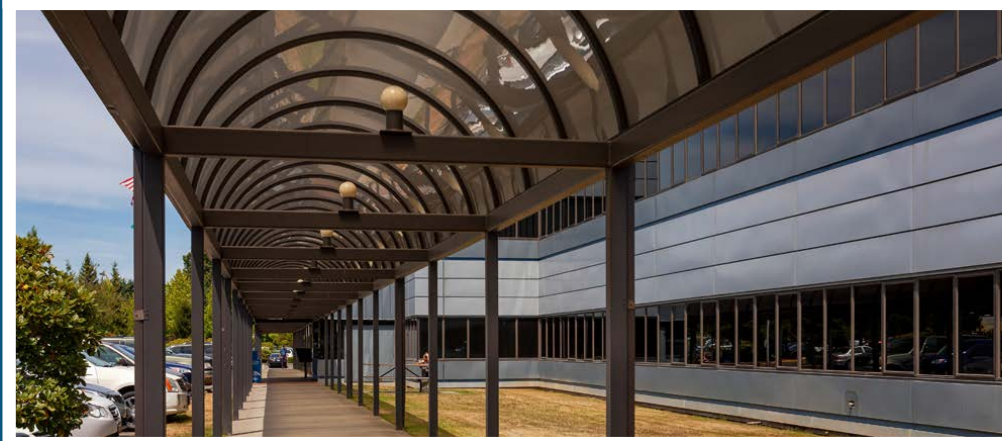
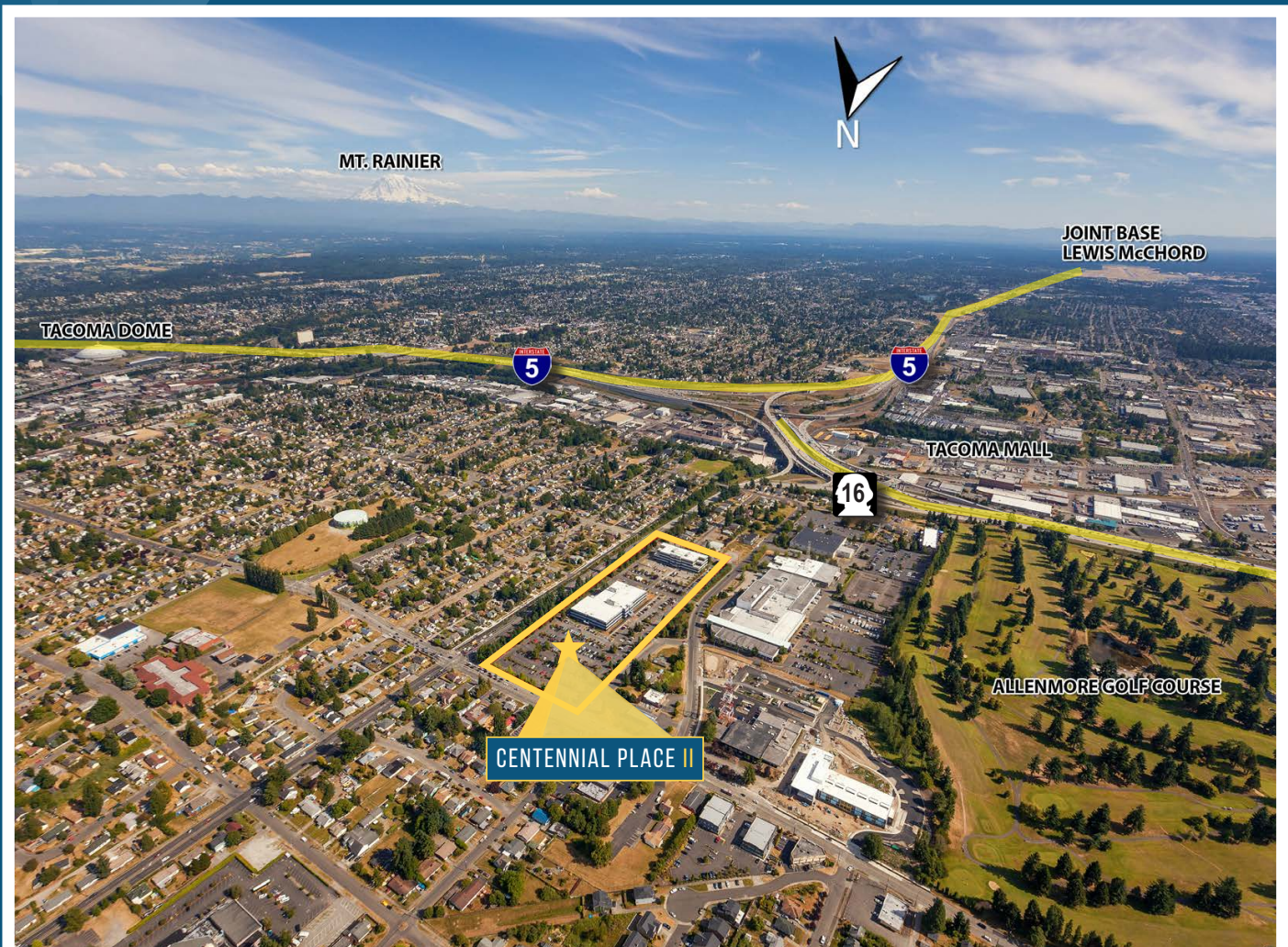
ERIC CEDERSTRAND
253.779.2428
ecederstrand@neilwalter.com

CENTENNIAL PLACE II



2121 S STATE ST | TACOMA, WA

NEIL WALTER
COMPANY



All square footage references are approximate. The information contained herein is from sources deemed reliable. It is provided without representation, warranty or guarantee, expressed or implied as to its accuracy. Prospective Buyer or Tenant should conduct an independent investigation of all matters.

JOHN DEHAN
253.779.2433
jdehan@neilwalter.com

ERIC CEDERSTRAND
253.779.2428
ecederstrand@neilwalter.com

1940 East D St #100
Tacoma, WA 98421

253.779.8400
www.neilwalter.com

CENTENNIAL PLACE II



2121 S STATE ST | TACOMA, WA

NEIL WALTER
COMPANY

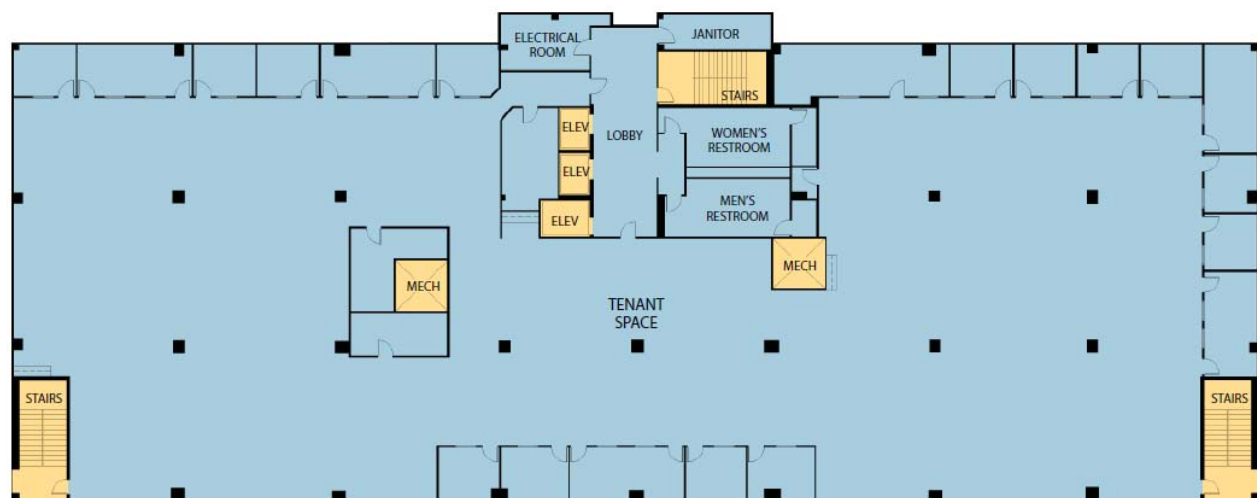
First Floor Plan

±9,671 RSF Available



Second Floor Plan

Fully Leased



JOHN DEHAN
253.779.2433
jdehan@neilwalter.com

ERIC CEDERSTRAND
253.779.2428
ecederstrand@neilwalter.com

All square footage references are approximate. The information contained herein is from sources deemed reliable. It is provided without representation, warranty or guarantee, expressed or implied as to its accuracy. Prospective Buyer or Tenant should conduct an independent investigation of all matters.