

# 1210 Series

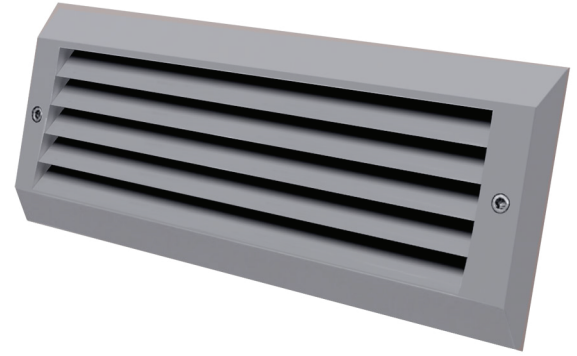
## LED Horizontal Architectural Steplight

Type:

Catalog Number:

Project/Location:

Approved By:



### SPECIFICATIONS

**Housing:** Heavy-duty construction of corrosion resistant die cast aluminum. Faceplate shall be secured using stainless steel hardware. Housing provided with 1/2" conduit opening. Suitable for concrete pour.

**Gasket:** Silicone gasket seals out moisture, dust, and insects for weather-tight operation.

**Mounting:** Recessed wall or optional surface box.

**Lens:** 1/8" thick tempered diffused glass lens or impact resistant UV stabilized polycarbonate.

**Driver:** Solid state electronic constant current. Input voltage 120 or 277V under 6 LED. UNV voltage over 6 LED. Operating temperature -20°C to 40°C, Power Factor ≥ .90.

**LED:** Specify amber (A), blue (B), green (G), red (R), or 3000 (30K), 3500 (35K), 4000 (40K), and 5000 (50K) – 40K standard.

**Lumens:** 230.

**Finish/Colors:** Zinc based primer with polyester powder coat finish in Matte Black (MB), Matte White (MW), Matte Bronze (BZ), Silver Gray (SG), or a custom color (CC).

**Testing:** LM79, LM80, ETL.

Conforms to UL Standard 1598. Suitable for wet locations.

### Options:

|     |                                  |        |   |
|-----|----------------------------------|--------|---|
| S   | Surface mount box                | 2C     | Two circuits                                |
| SS  | Stainless steel frame            | EB-LED | Integral LED emergency backup for 2 modules |
| TW  | Thru wire                        |        |   |
| FLA | Harsh environment finish         |        |   |
| TF  | Turtle Friendly 590 nm Amber LED |        |   |

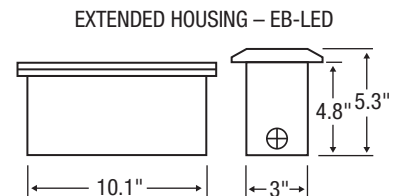
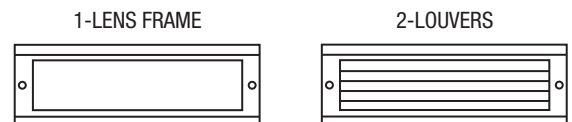
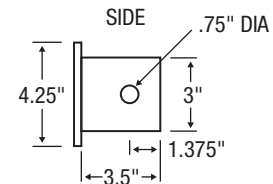
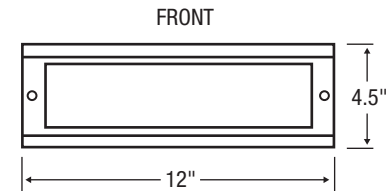
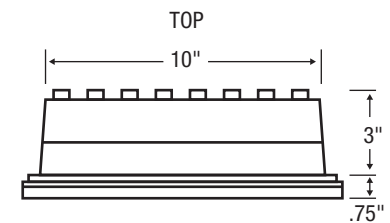
See options page for additional information or consult factory.



| Series | Source | Wattage/Max       |
|--------|--------|-------------------|
| 1210   | LED    | 10W (6W standard) |

### ORDERING EXAMPLE

1210 – 2 – 10WLED – 40K – 120 – SG



## ELCAST LIGHTING

815 S. Kay Ave., Addison, IL 60101 USA • 630.543.5390  
www.ElcastLtg.com • ElcastLtg@ElcastLtg.com

**Made in USA** – 5 year limited warranty

©2017. Specifications are subject to change without notice. Consult factory for verification.

REV 04-19