



# Healthcare Practice

# Healthcare Practice Highlights



14+ years' experience in the Healthcare Payer & Provider Segment



2000+ resources working in multiple shifts



40+ clients in the Provider, Payer and Wellness/CRO segment



5M customer service calls per annum, including chats



Certifications from AAPC, AHIMA & AAHAM



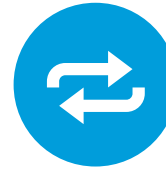
ISO 9001 certified since 1999, ISO27001 certified since 2010, & HIPAA Compliant since 2008



Managed Revenue \$3bn per annum

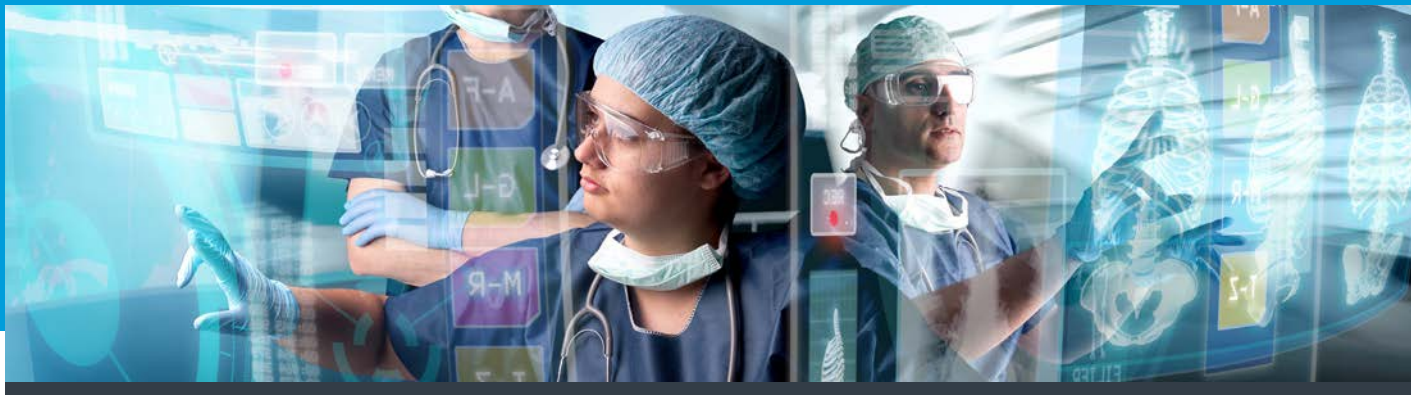


Dedicated 3 offshore locations for Healthcare



Processing over 250 million transactions every year





## Integrated Healthcare BPM Services

Our suite of blended solutions are spread across amalgamated service layers of IT, Enabling Services and BPM processes:

<p>Provider Services</p>		<p>Revenue Cycle Management Coding &amp; ICD 10 Services Provider Workflow and Enabling Tools</p>
<p>Wellness Services</p>		<p>Wellness ERP Application Biometric Measurements HRA Flu/Vaccination Reminders Physician Recruitment / Credential</p>
<p>Payer</p>		<p>Claims Administration Member Configuration Benefit Configuration HCC Coding/ Revenue Recovery</p>
<p>Network Management</p>		<p>Provider Smart Data Entry tool Provider network New Provider loading Credential data capture Provider updates</p>
<p>Blue</p>		<p>Member Portal ITS integration IVR Professional staffing</p>
<p>Government Services (Support)</p>		<p>HIX Exchange State Medicaid program Social Security office – uninsured Eligibility ERP</p>



## Why ApexonHealth

ApexonHealth recognizes the need for reducing expenses, especially given the current state of the economy, and offers a model that alleviates administrative challenges and frees up resources to focus on the needs of the core business. We deliver:



Better Financial Results



Increased collections & Lower AR days



Flexible Pricing



Analytics-driven workflows



Cost Benefits upto 25 - 30%



Flexible & Non-demand staffing



Actionable Intelligence




In-built Advanced Predictive Analytics


## About ApexonHealth


ApexonHealth helps Providers, Payers, and other healthcare organizations harness the power of AI-technologies. This drives reduced costs, better cash flow, and increased customer satisfaction. ApexonHealth's Newton AI platform integrates machine learning, Robotic Process Automation, and Business Process Management. Solutions let customers modernize their back-office without the need for costly system integration.

Headquartered in Southfield, MI, ApexonHealth is the healthcare division of Technosoft Corp. The company has 14+ years of healthcare experience and 6 global delivery centers in the US and India. More than 80 healthcare organizations trust ApexonHealth. ApexonHealth is a member of HFMA, HBMA, AHIMA, AAHAM, AAPC, MGMA, AHIP and CISA. To learn more, visit [Apexonhealth.com](http://Apexonhealth.com).

## Contact Us

 888.846.3329

 [info@apexonhealth.com](mailto:info@apexonhealth.com)

 [apexonhealth.com](http://apexonhealth.com)

One Towne Square, 6th Floor • Southfield, MI 48076