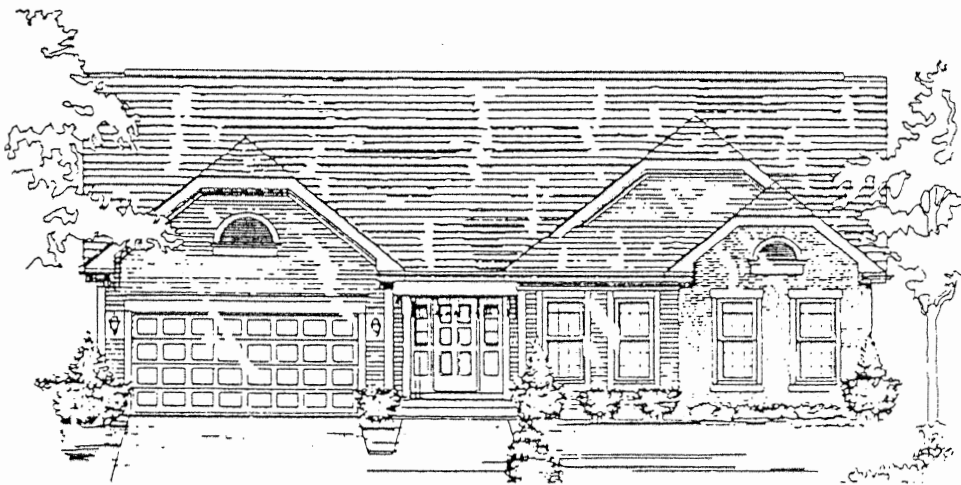
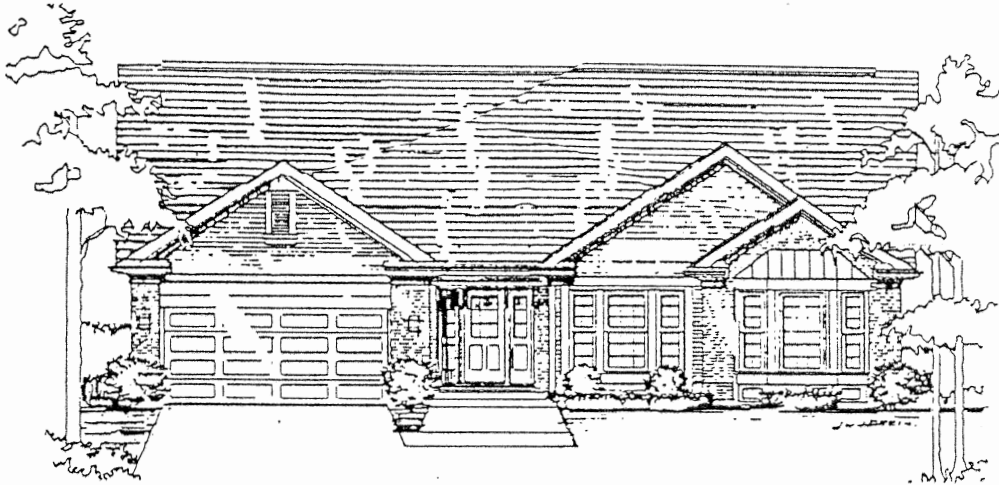
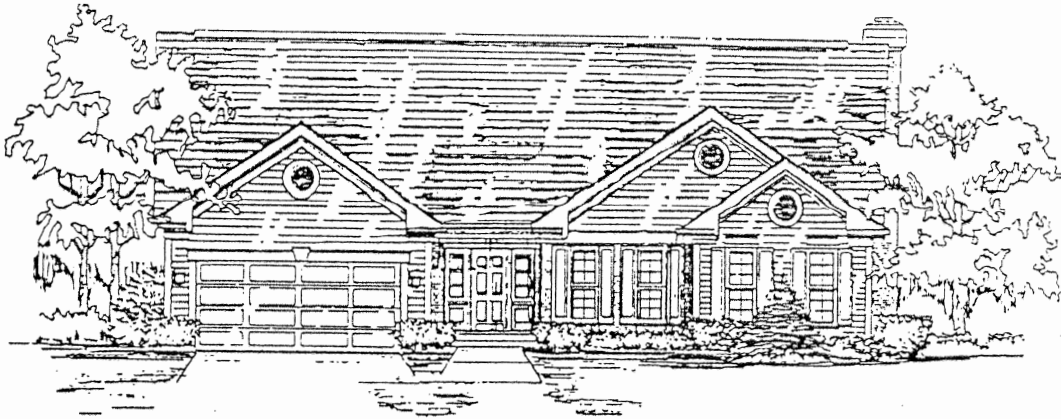


# EATON

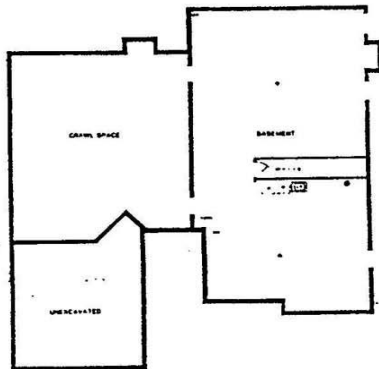


7 W. White Barn Road  
Vernon Hills, IL 60061  
312-913-8877

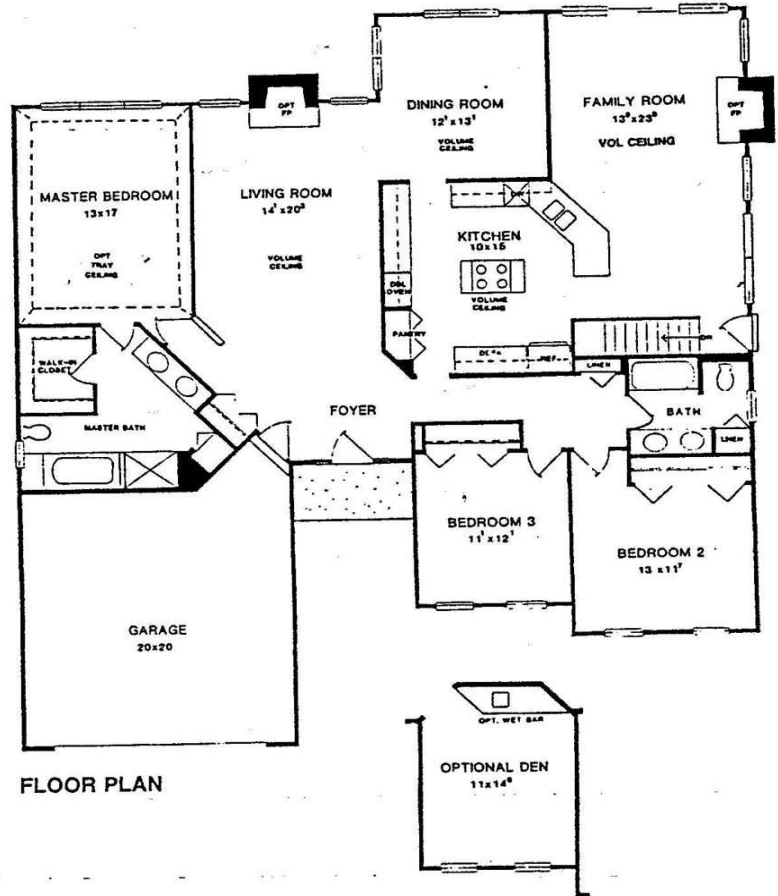
# Eaton (2115 ft<sup>2</sup>)

High volume ceilings throughout the Eaton offer an elegant touch to two or three bedroom ranch home \ combination of both formal and more casual features lead to a wide variety of day-to-day living entertaining possibilities. Your entry foyer opens nicely to a formal living room and to a separate dining room beyond. The use of volume ceilings in rooms and the addition of a fireplace in living room immediately creates a striking visual mark on the elegance of this home. In addition to formal aspects of the home, the family room with its high ceiling and fireplace provides a table setting for day-to-day living and casual entertaining. A large centrally located kitchen with a convenient island cooktop/counter is adjacent both to the dining room and to the family room. For total privacy, the master bedroom/bath suite has been discreetly located away from the family room and the other bedrooms. An optional trayed ceiling provides a further luxurious note to this room. The Eaton also offers full sized second and third bedrooms or you can convert the extra bedroom to a den with an optional wet bar. Your second full bath is easily accessible from the additional bedrooms. A large two car garage and a basement complete a design that is amazingly versatile in its ability to meet a wide variety of living requirements.

## Stone Fence Farms Eaton Model



BASEMENT SHOWN 1/2 SIZE



FLOOR PLAN