

Creating a Relationship with Your Students

Rabbi Mordechai Raizman
Associated Talmud Torahs

Scenario 1

C is for Caring

- * You walk by a game at the end of recess and you see students in your class making fun of one student in a horrific way. The bell rings --> back to class.

How do you start class after seeing this incident?

Scenario 2

○ is for One-on-One attention

- * A veteran Rebbe gives you advice that your students have to respect you .In order to do so, you have to be the מלך and they are the עבד. That should be the nature of your relationship.

Do you agree ? Explain your rationale.

Scenario 3

N is for No Negativity

- * A student in middle of class screams out, “This is stupid!!”

What is your response ?

Scenario 4

N is for *Neshama* potential

- * A past teacher gives you a report that a particular student has a terrible attitude. You will need to make sure that he/she doesn't control the class or you will be in for a long year.

How do you approach your relationship with this student?

Scenario 5

E is for Example

- * You said something in class unintentionally that hurt one of your student's feelings in front of the class.

What would you do?

Scenario 6

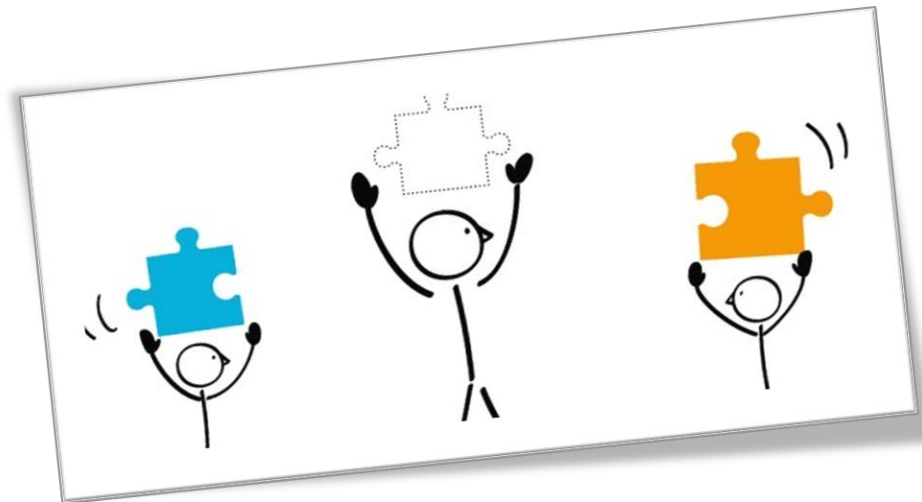
C is for Creative

- * A parent tells you that his child feels like you pick on him/her too much and you hate him/her.

What would you do to turn that situation around?

The responsibility of being a teacher and the important role a teacher plays in the development of students

- * **C** Caring
- * **O** One-on-one attention
- * **N** No negativity
- * **N** *Neshoma* potential
- * **E** Example
- * **C** Creative
- * **T** *Tefillah*



The responsibility of being a teacher and the important role a teacher plays in the development of students

- * **R** Respectful
- * **E** Example
- * **B** Believes in *talmid*
- * **B** Bonds with *talmid*
- * **E** Elevates *talmid*



- * **M** Modeling
- * **O** One-on-one
- * **R** Respectful
- * **A** Accept & believe in students
- * **H** High but realistic expectations

Practical Tips



- * Praise every child
- * Get to know your *talmid* personally
- * Set a positive tone in class – frame the day
- * Private time – one-one-one
- * Work on oneself constantly