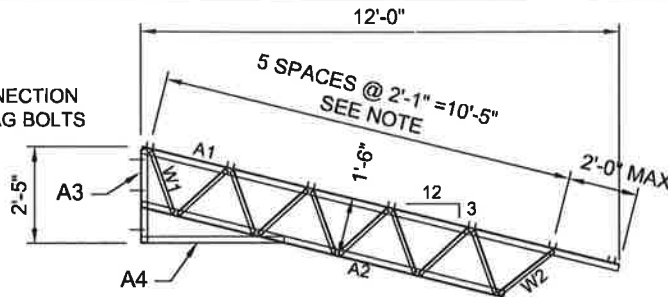


TRUSS TO POST CONNECTION
1/2" A307 BOLTS OR LAG BOLTS
(3 PER POST)



TRUSS DETAIL

BILL OF MATERIALS (PER TRUSS)

MARK	DESCRIPTION	LENGTH	NUMBER REQUIRED	MATERIAL
A1	TOP CHORD	L 2 X 2 x 3/16	1	A36
A2	BOTTOM CHORD	L 2 X 2 x 3/16	1	A36
A3	VERTICAL END	L 2 X 2 x 3/16	1	A36
A4	BRACE	L 2 X 2 x 3/16	1	A36
W1	WEB	L 1.25 x 1.25 x 1/8	9	A36
W2	WEB	L 1.25 x 1.25 x 1/8	1	A36

---THIS DESIGN MAY ALSO BE USED FOR TRUSS LENGTHS SHORTER THAN 12 FEET.

NOTES:

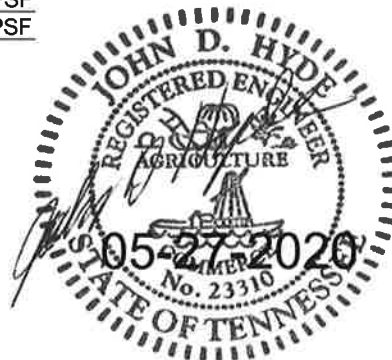
1. PURLINS TO BE MINIMUM 2x6 (#2 SYP) @ 2'-0" O.C.
2. CONTRACTOR RESPONSIBLE FOR TEMPORARY CONSTRUCTION BRACING.
3. FABRICATOR TO VERIFY DIMENSIONS BEFORE FABRICATION.
4. THIS DESIGN IS FOR TRUSS ONLY, UNLESS NOTED.
5. ALL WELDS AND WELDING PER AWS.
6. STRUCTURAL STEEL AND FABRICATION PER AISC.
7. MEMBER DIMENSIONS ARE TO BE ADJUSTED FOR SHORTER TRUSS LENGTHS.
8. FASTENERS INSTALLED WITH TREATED WOOD MUST BE MANUFACTURER RECOMMENDED FOR USE WITH THE ASSOCIATED WOOD TREATMENT.

DESIGN LOAD NOTES:

TRUSS SPACING = 12' ALLOWABLE DEAD LOAD = 6 PSF
 TRUSS SPACING = 10' ALLOWABLE DEAD LOAD = 10 PSF
 TRUSS SPACING = 8' ALLOWABLE DEAD LOAD = 14 PSF

DESIGN CRITERIA - IBC 2012, 2015, & 2018

1. DESIGN LOADS PER ASCE 7-10 & 7-16
2. REQUIREMENT FOR STEEL - ASTM A-36
3. ROOF LIVE LOAD = 20 PSF
DEAD LOAD = SEE DESIGN LOADS
4. DESIGN WIND SPEED = 115 MPH (IBC 2015 MAP)
5. WIND RISK CATEGORY II
6. WIND EXPOSURE CATEGORY B
7. BUILDING CATEGORY II
8. GROUND SNOW LOAD = 5 PSF
9. IMPORTANCE FACTOR 1.0



THIS DRAWING WAS PRODUCED BY JOHN D. HYDE AND MAY NOT BE MODIFIED IN ANY WAY NOR SHALL THIS DRAWING BE USED BY ANYONE OTHER THAN E4 Steel Truss LLC OR ITS ASSIGNS WITHOUT THE EXPRESS WRITTEN PERMISSION OF JOHN D. HYDE WHOSE PROFESSIONAL ENGINEER'S STAMP APPEARS ON THIS DRAWING.



BY:
 JOHN D. HYDE, PE
 AL REG NO. 11859
 177 ARLINGTON RD
 ARAB, AL 35016
 PH 256-572-0195
 jhyde@mindspring.com

E4 Steel Truss LLC			
30212 Hwy 278 ADDISON, AL 35540 (256) 735-4602			
12' STEEL SNOOT TRUSS			
SCALE NONE	DATE 05-27-2020	DRAWN BY J. HYDE	DRAWING NO. 20-0527-12S
12' TRUSS DETAIL			SHEET NO. 1 OF 1