

SUBMITTAL SHEET



www.akwsupply.com

TEL: 714-919-7814 FAX: 714-464-5474

Job Name: _____

Contractor: _____

Location: _____

Quantity: _____

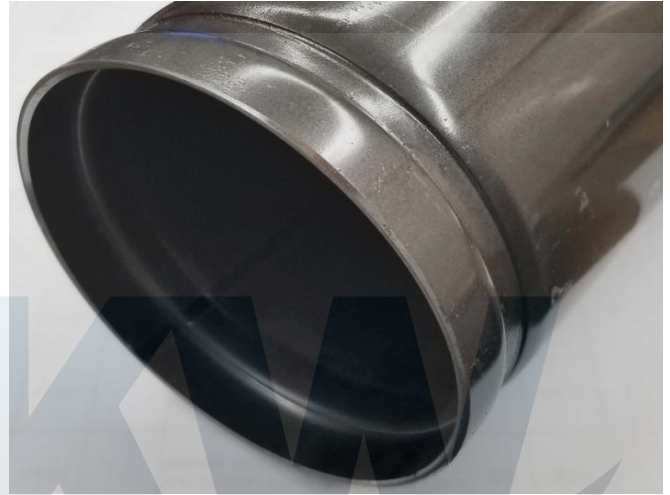
Engineer: _____

Date: _____

Steel Pipe Super Flow

Features

- * Manufactured According to ASTM A795
- * ERW, Grade A, Type E
- * Meets NFPA 13
- * Plain Ends or Grooved Ends
- * Corrosion Resistant Surface
- * Mill Lacquer Coated
- * 300 PSI Rated
- * UL List & FM Approved



Specification

Pipe Mill: MS Pipe

Country of Origin: South Korea

Nominal Pipe Size: 1-1/4" to 4"

Length: 21 Feet

Empty WFW**

Size	O.D.	I.D.	Lbs/Ft	Lbs/Ft	Pcs/Lft	CRR*
1-1/4"	1.660"	1.494"	1.399	2.194	61	3.70
1-1/2"	1.900"	1.710"	1.833	2.875	61	4.42
2"	2.375"	2.185"	2.315	4.016	37	3.58
2-1/2"	2.875"	2.709"	2.477	5.092	30	1.37
3"	3.500"	3.320"	3.281	7.207	19	1.27
4"	4.500"	4.298"	4.750	11.330	19	1.10

*CRR=Corrosion Resistance Ratio Calculated Using UL CRR Formula Under UL Category VIZY.

This Ratio Value Is Used to Measure the Ability of A Pipe to Withstand Corrosion.

**WFW=Water Filled Weight



AKW Supply Co. product specifications and dimensions are approximate and are provided for reference only. It's the user's responsibility to observe and adapt such precautions as may be advisable for the protection of personnel and property in the handling and use of our products. AKW Supply Co. reserves the right to change or modify product design, construction, specification, model number or material without prior notice and without incurring any obligation to make such changes on AKW Supply Co. previously sold.

SUBMITTAL SHEET



www.akwsupply.com

TEL: 714-919-7814 FAX: 714-464-5474

Job Name: _____ Contractor: _____

Location: _____ Quantity: _____

Engineer: _____ Date: _____

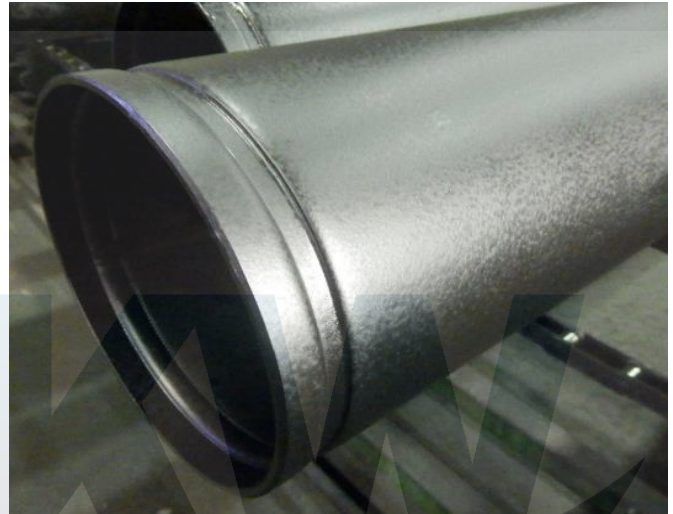
Steel Pipes SCH 10

Features

- * Manufactured According to ASTM A53
- * Sch 10, ERW, Grade A, Type E
- * Plain Ends or Grooved Ends
- * Black Color
- * Paint Coating
- * UL List & FM Approved

Chemical Composition (Max. %)

C	Mn	P	S
0.25	0.95	0.05	0.045



Tensile Strength (Min. Psi)

Yield	Tensile
30,000	48,000

Specification

Pipe Brand: STS

Country of Origin: Thailand

Nominal Pipe Size: 1-1/4" to 6"

Length: 21 Feet



Size	O.D.	I.D.	Lbs/Ft	Test Pressure	PCS/Bundle
1-1/4"	1.660"	1.442"	1.810	1,000 Psi	61
1-1/2"	1.900"	1.682"	2.090	1,000 Psi	61
2"	2.375"	2.157"	2.640	1,000 Psi	37
2-1/2"	2.875"	2.635"	3.530	1,000 Psi	19
3"	3.500"	3.260"	4.340	1,000 Psi	19
4"	4.500"	4.260"	5.620	1,200 Psi	19
6"	6.625"	6.357"	9.300	1,000 Psi	7

AKW Supply Co. product specifications and dimensions are approximate and are provided for reference only. It's the user's responsibility to observe and adapt such precautions as may be advisable for the protection of personnel and property in the handling and use of our products. AKW Supply Co. reserves the right to change or modify product design, construction, specification, model number or material without prior notice and without incurring any obligation to make such changes on AKW Supply Co. previously sold.

SUBMITTAL SHEET



www.akwsupply.com

TEL: 714-919-7814 FAX: 714-464-5474

Job Name: _____ Contractor: _____

Location: _____ Quantity: _____

Engineer: _____ Date: _____

Steel Pipes SCH 40

Features

- * Manufactured According to ASTM A53
- * Sch 40, ERW, Grade A, Type E
- * Plain Ends or Threaded & Coupled
- * Black or Galvanized
- * Varnished Coating



Chemical Composition (Max. %)

C	Mn	P	S	Residual
0.25	0.95	0.05	0.045	Note 1

Note 1: Residual Elements Cu (0.4), Ni (0.4), Cr (0.4), Mo (0.15), and V (0.08) Combined Shall Not Exceed 1%.

Tensile Strength (Min. Psi)

Yield	Tensile
30,000	48,000



Specification

Brand: STS

Country of Origin: Thailand

Nominal Pipe Size: 1/2" to 2" NPT

Length: 10 Feet to 21 Feet

Size	O.D.	I.D.	Lbs/Ft	Test Pressure	PCS/Bundle
1/2"	0.840"	0.622"	0.850	700 Psi	127
3/4"	1.050"	0.824"	1.130	700 Psi	91
1"	1.315"	1.049"	1.680	700 Psi	61
1-1/4"	1.660"	1.380"	2.270	1,200 Psi	61
1-1/2"	1.900"	1.610"	2.720	1,200 Psi	61
2"	2.375"	2.067"	3.660	2,300 Psi	37

AKW Supply Co. product specifications and dimensions are approximate and are provided for reference only. It's the user's responsibility to observe and adapt such precautions as may be advisable for the protection of personnel and property in the handling and use of our products. AKW Supply Co. reserves the right to change or modify product design, construction, specification, model number or material without prior notice and without incurring any obligation to make such changes on AKW Supply Co. previously sold.