

THE TIME IS NOW:

An audit evaluating the timeliness and appropriateness of medications in patients with Parkinson's disease on admission to hospital

Mika Varitimos,¹ Jesseca Eglington,¹ Jingru Huang,² ¹Royal Brisbane and Women's Hospital, ²University of Queensland

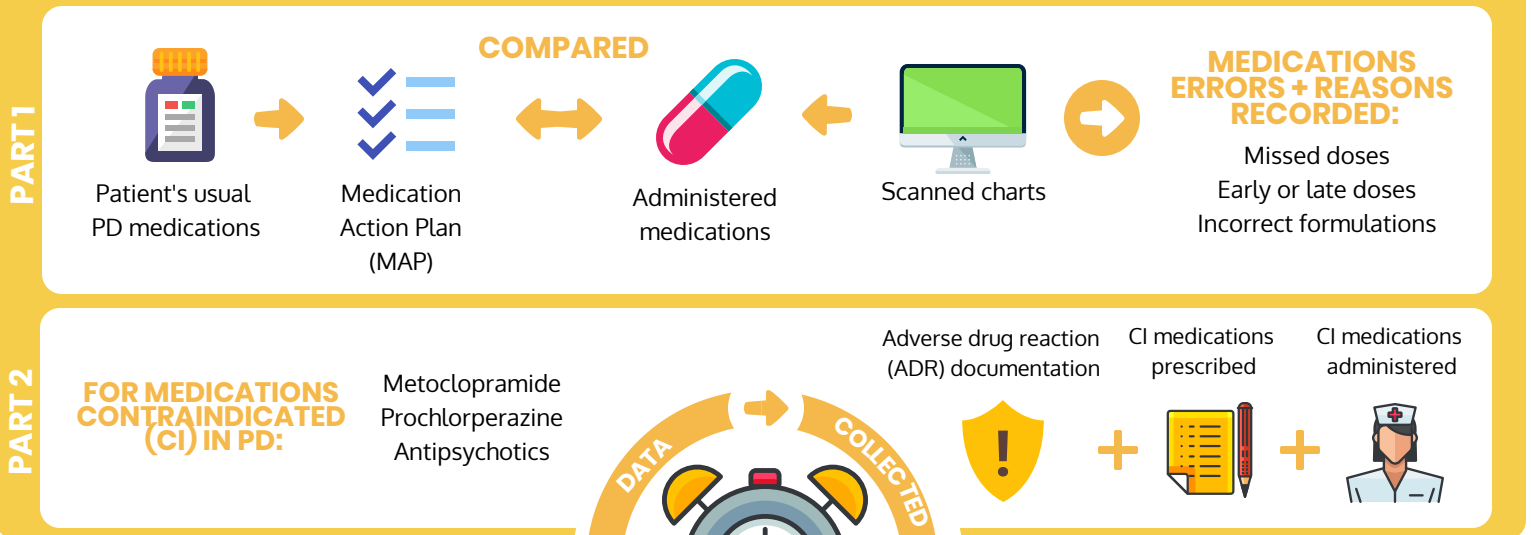
BACKGROUND

Recent literature has demonstrated that delay of Parkinson's disease (PD) medications or administration of dopamine antagonists in hospital increases length of stay.¹⁻³

This study provides Australian data which evaluates the incidence and causes of PD medication errors on admission to hospital.

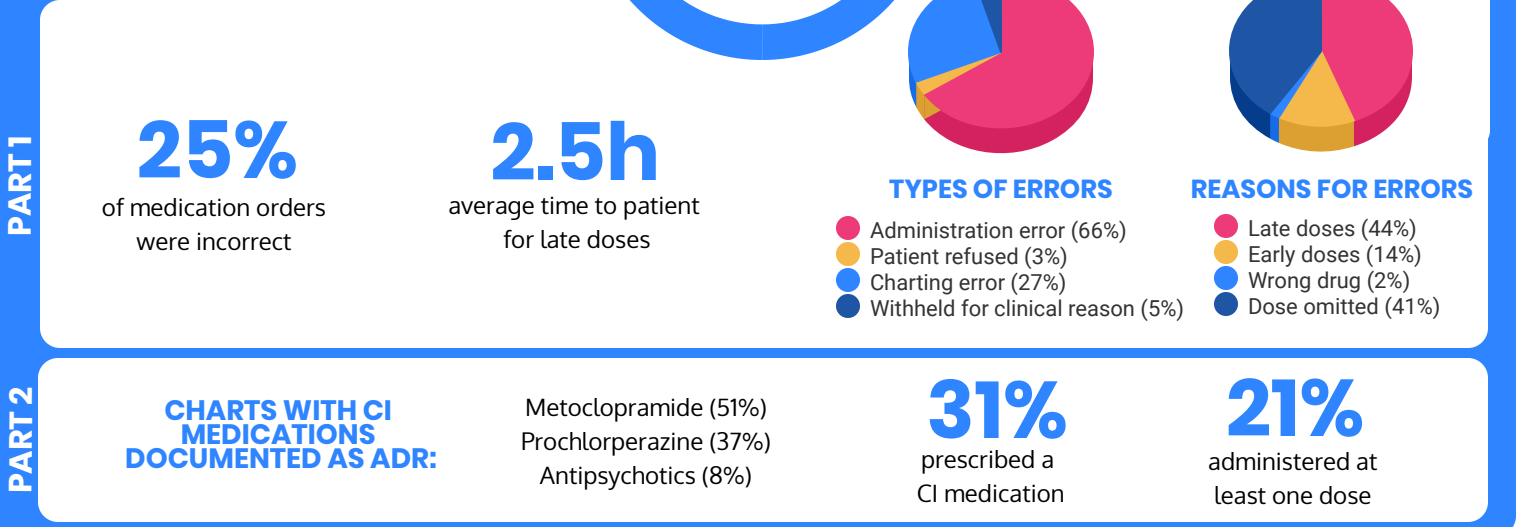
METHODS

Retrospective audit of PD coded patients admitted to RBWH Neurology or Medical wards from 1st Jan to 30th Dec 2018



RESULTS

62 patients (41 male) with a total 644 medication doses



CONCLUSION

Errors in PD medications on admission to hospital are common and multifactorial. The most common causes are late and omitted doses, as well as the administration of contraindicated medications, potentially exacerbating

patient symptoms and destabilising PD control. The implementation of a self-medication policy and staff education represent essential areas for improvement of medication use in patients with PD.