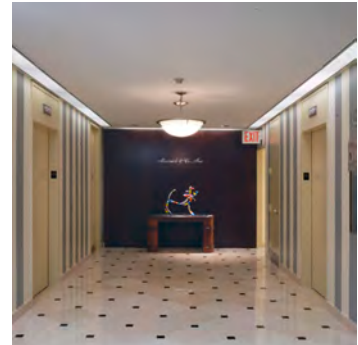


***Muzinich & Company, Inc. – 450 Park Avenue,
New York, NY***

Muzinich is a global institutional asset manager specializing in corporate credit, with headquarters in New York and offices in London, Paris, Cologne, Zurich, Milan, Madrid and Manchester. In response to steady growth, the firm planned a phased expansion to acquire the balance of the 10,800 S.F. floor as adjacent tenants' leases expired. BGA's solution included:



- Development of a Schematic Plan (determined by the firm's priorities) for the long-term, full floor occupancy, with Construction Phasing information
- Preparation of Contract Documents for (4) non-overlapping construction phases, involving Client Meeting Rooms; an expanded Data Center; a Staff + Pantry Lounge; an expanded Reception Area and the re-design of the Elevator Lobby
- Design and integration of an Open Plan Layout centered on the Pantry/Lounge, via Built-In Millwork desks
- Integration of the Tenant's extensive art collection of painting and sculpture, throughout the floor
- Coordination of State-of-the-Art Audio Visual monitors and tele-conferencing capabilities in the Board and Meeting Rooms, and also in the Lounge
- Selection and specification of Casegoods, Task Seating, Filing and Tables

