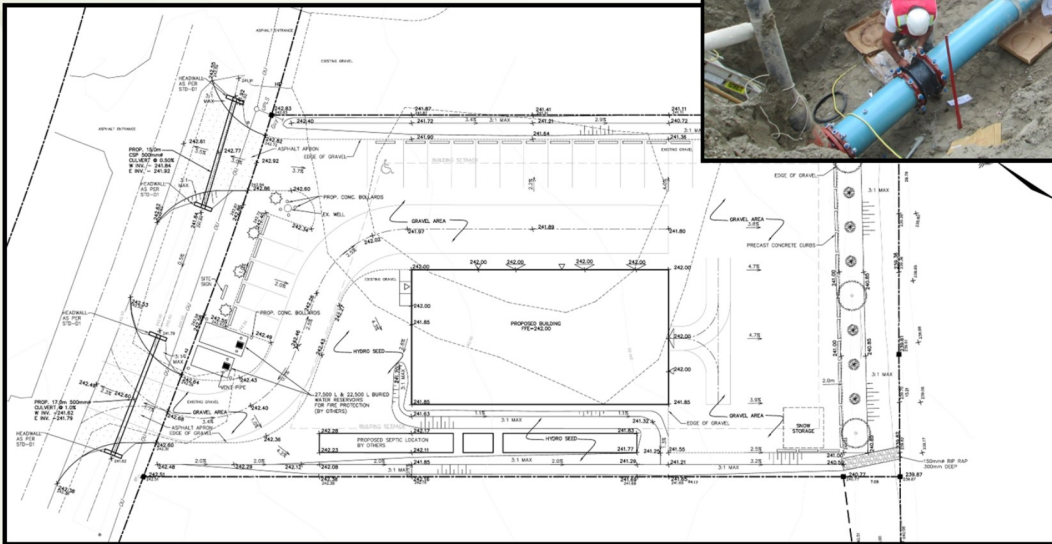


# INDUSTRIAL

13 INDUSTRIAL PARKWAY  
LES BERTRAM CONSTRUCTION  
TOWNSHIP OF SPRINGWATER, ON

PEARSON ENGINEERING LTD. was retained for our engineering services at the proposed industrial development located on 13 Bertram Industrial Parkway in the Township of Springwater. Site grading and stormwater analysis was provided, including coordination with the township fire chief in order to determine fire water storage. Fire water tanks were required on site in order to meet storage requirements. Preliminary Septic Design was offered and consisted of sizing, location and the configuration of a sanitary treatment system on the property. The site required a new entrance crossing and culverts through the existing roadside ditch.



**PEARSON**  
ENGINEERING LTD.