

# STONE STREET STITCHWORKS

A complimentary chart by Stone Street Stitchworks.

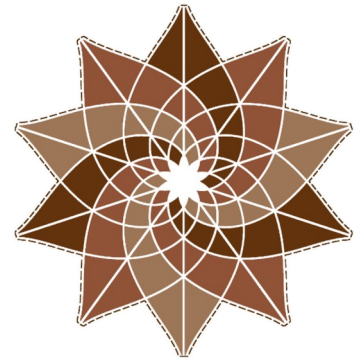
This sweet design of a Gingerbread Manor house is perfect for an ornament, pin keep, or holiday card. The long straight stitches used in the window sills and door give the house a hand-piped look. The spindly look of the lines are reminiscent of pen and ink illustrations in vintage newspapers and magazines.

**Design Size:** 25W x 40H; **Stitched Size:** 1.8" x 2.9" at 14 stitches per inch

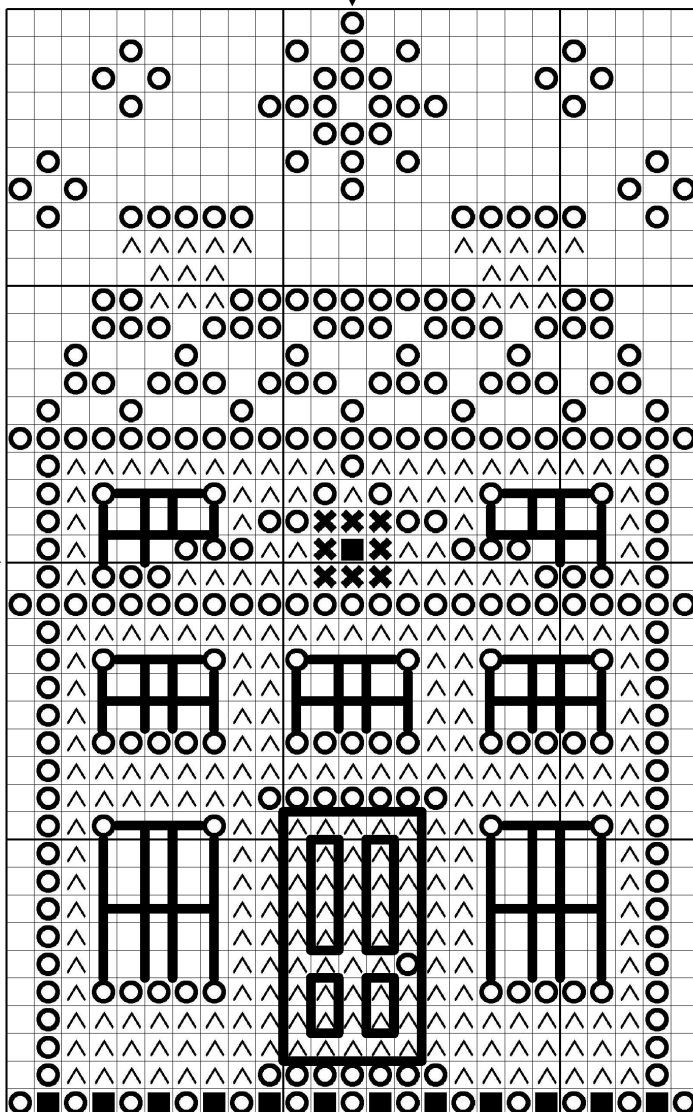
**Fabric:** The model was stitched on 28-count Dark Chocolate linen by Zweigart.

**Threads:** DMC. Two strands of thread are recommended for the full crosses as well as the straight stitches. All straight stitches are stitched in DMC 3865 Winter White. The red and green threads are used for only a few stitches and can be easily substituted.

**Instructions:** The window sills and door detail are stitched with long straight stitches (rather than several short backstitches) to appear like piped lines of icing. First stitch all the full crosses and then stitch the straight stitches. The straight stitches should be stitched as one long stitch for each "line". However, if a "line" is three or more grid squares long, split the line into two or three shorter straight stitches instead. The placement/straightness of these stitches does not need to be perfect because the icing on the house is meant to look hand-piped.



## GINGERBREAD MANOR



	DMC	Description
■	321	Christmas Red
△	434	Brown (light)
✕	3362	Pine Green (dark)
○	3865	Winter White

Etsy: <https://StoneStreetStitch.etsy.com>

Instagram: @StoneStreetStitchworks

E-mail: StoneStreetStitchworks@gmail.com

Copyright: © 2018 Stone Street Stitchworks.

All rights reserved. This pattern may be printed and copied for personal use only.