

Tri-County Health Department (TCHD)

Arapahoe County Business Recovery Task Force COVID-19 Testing Data Snapshot

Meghan Prentiss, Laura Don, and Wendy Nading

August 3, 2020

Total COVID-19 Tests
in Arapahoe County

67,741

Total Positive COVID-19 Tests
in Arapahoe County

6,146

% Positive Tests
in Arapahoe County

9.1%



COVID19 Neighborhood Cases and Testing (Updated Daily)

Adams, Arapahoe, Douglas Counties (See <https://arcg.is/14OzzG> for the full dashboard)

Updated: 7/27/2020, 4:36 PM

Select a county or neighborhood from the lists below to filter the

County

DOUGLAS

ARAPAHOE

Neighborhoods

Select a neighborhood from the list to filter the graphs and map

East Columbine

Holly Hills

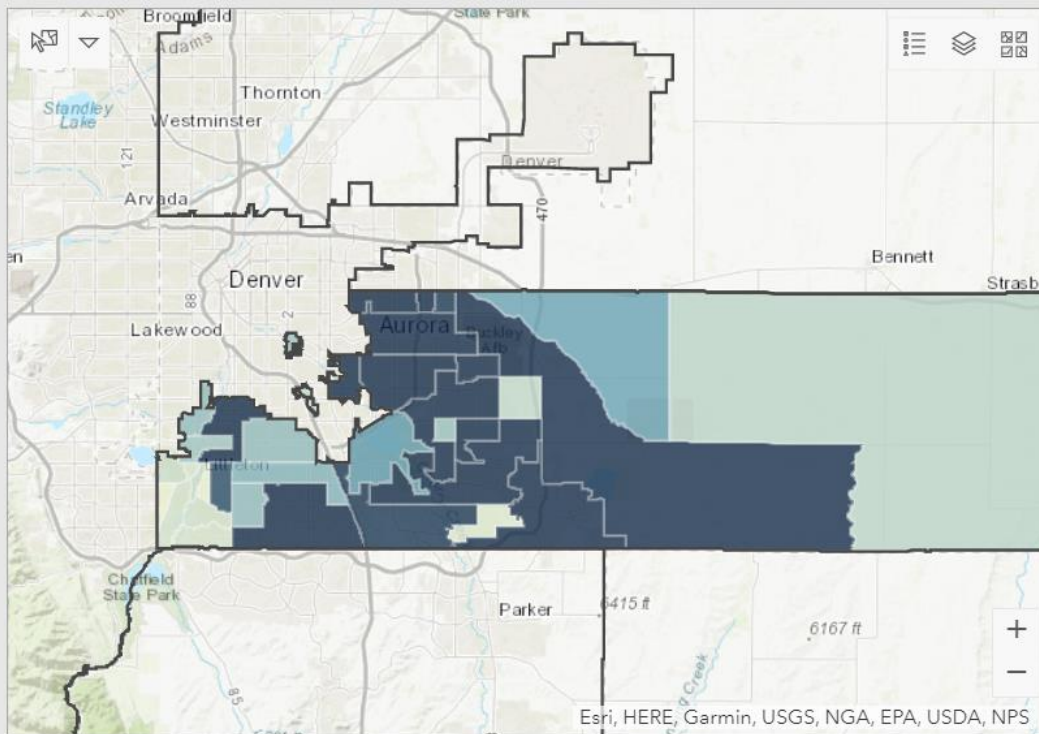
Sullivan

Glendale Area

Laredo Highline

North Central Westminster

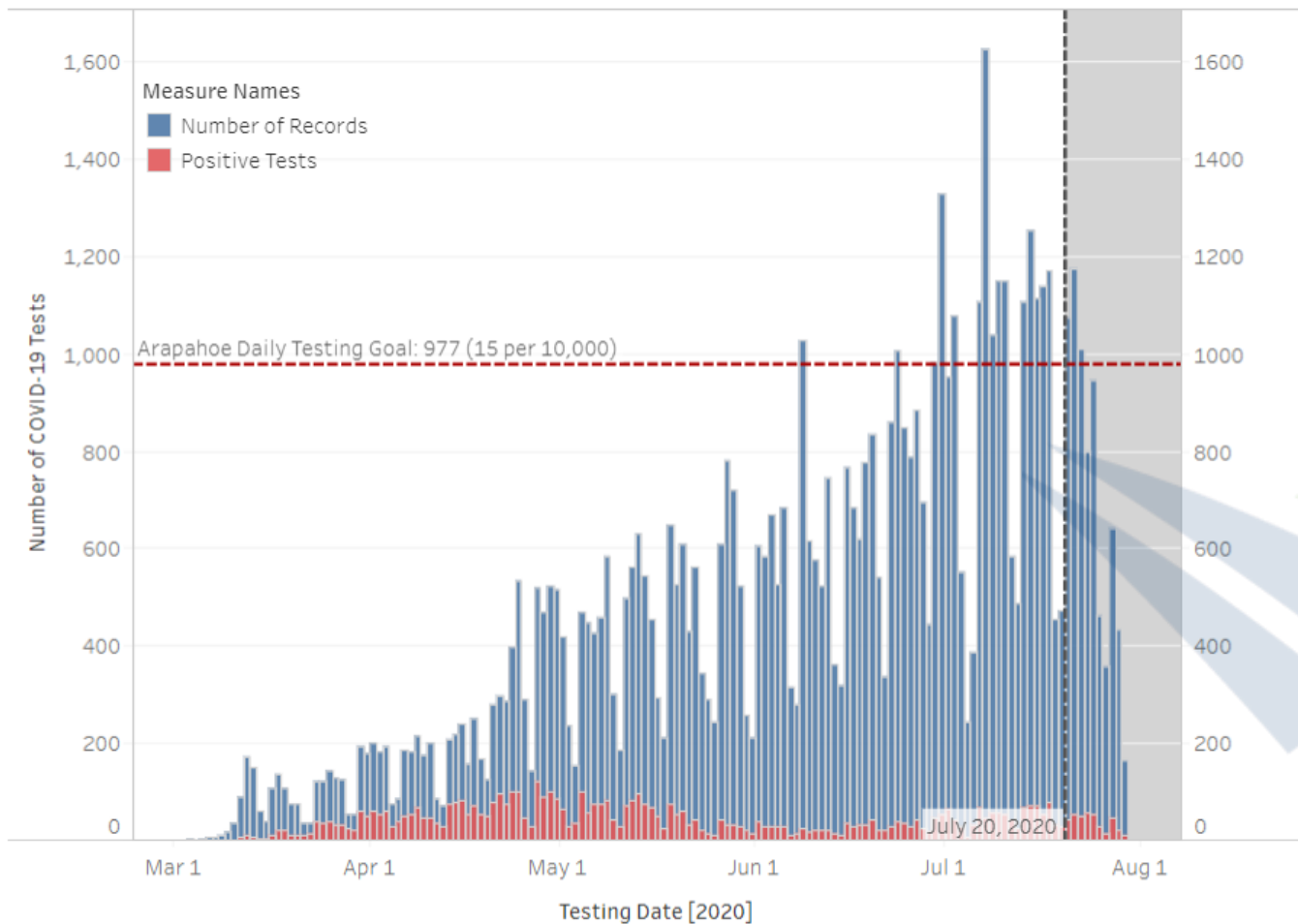
Wyco Park, Northeast Northglenn



Daily Trend of COVID-19 Testing

in Arapahoe County

Past 7 Days: testing data may be incomplete due to processing delays



Average Number of Tests (by week)

in Arapahoe County

July 19 - July 25

848 Completed Tests
129 Needed Test (based on testing goal)

July 12 - July 18

961 Completed Tests
16 Needed Test (based on testing goal)

July 5 - July 11

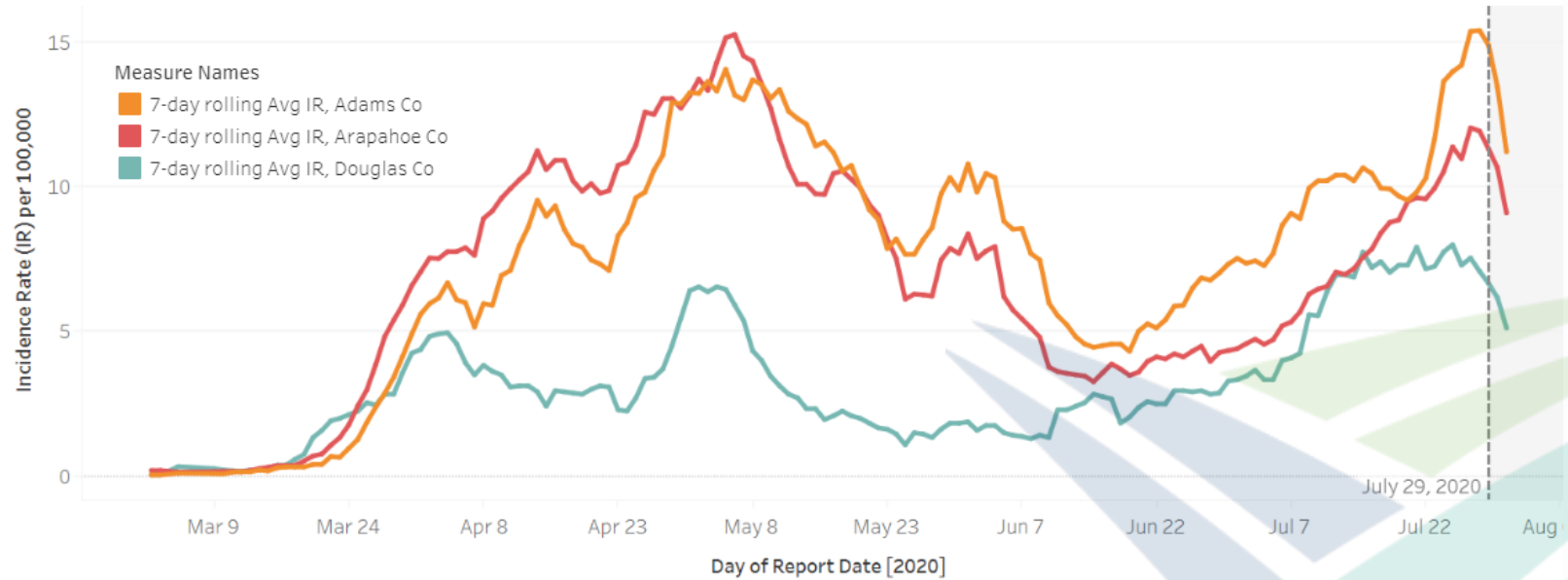
1,006 Completed Tests
-29 Needed Test (based on testing goal)

A Look at Recent Trends

Daily Incidence Rates, 7-Day Rolling Average, per 100,000*

Adams, Arapahoe, and Douglas Counties

*Last several days' data may be incomplete due to processing delays (grayed-out area on graph)



% Tests Positive

% Positive, 07/12 - 07/18

5.1%

% Positive, 07/19 - 07/25

5.9%

Testing Rates per 10,000

Past 14 Days

140.7

Cumulative

1,040

Current and Emerging Community Testing Efforts

- **STRIDE Community Health Center:** offering significant capacity since early in the response, with plans to continue testing; 2 drive thru sites (Jeffco Stadium and Del Mar Office in Aurora) and one and one mobile unit, additional drive thru events offered throughout Arapahoe County. stridechc.org/covid-19.
- **Sheridan Health Services:** by appointment only: Monday, Wednesday, and Friday, 3 p.m.- 4:30 p.m.
- **Pepsi Center:** drive-thru, for anyone living or working in Denver
<https://www.denvergov.org/content/denvergov/en/covid-19/recovery-guidance/testing.html>
- **UC Health:** drive thru sites available to the general public
<https://www.uchealth.org/services/infectious-diseases/coronavirus-covid-19/antibody-testing/>
- **Urgent Cares**
- ****Upcoming West Arapahoe STRIDE Community Testing Site**
- ****Potential Upcoming Mass Testing Site in Aurora**

**CHECK WITH YOUR PRIMARY CARE PHYSICIAN FIRST!
KNOW BEFORE YOU GO!**

Situational Awareness, Priority Populations

- **Priority Populations with some support:**

- Long-Term Care Facilities and Jails
- Schools
 - Social Enterprise – Gary Community Investments
 - NEW! [CDE School Guidance](#)
 - NEW! TCHD School/Childcare Branch being stood up
- Businesses
 - [New guidance for Returning to Work](#)
 - [CDPHE](#) and [CDC](#) Websites – when to test asymptomatic, time/symptom vs. test based strategy
 - [TCHD Business Re-Opening Task Force](#)
- Fall Flu Risk - Metro-Denver Partnership for Health (MDPH) – Current Work Group

- **Priority Populations who may not be supported:**

- Immigrants and refugees (some targeted testing)
- Essential workers
- Uninsured
- Unhoused (seeing growth of this group during economic downturn)
- Disabled/home-bound
- Those in over-crowded living situations

Getting Your Staff Back to Work!

3 Strategies defined by the CDC

- Symptom Based
- Time Based
- Test Based
 - Repeat testing is dependent on testing being available and accessible in a particular area as well as cost (on average, COVID-19 tests cost \$100-200 when not covered by insurance).
- TCHD and CDC do not recommend requiring proof of a negative test prior to returning to the workplace after documented COVID-19 infection.
- TCHD and CDC advise using either the symptom-based or time-based strategy
- The decision of which strategy to use is ultimately up to an employer
- TCHD does not provide individual clearance to return to work.
- [New guidance for Returning to Work](#)

If your employee has health insurance:

Call your health care provider right away if you believe you might have been exposed to COVID-19 or have symptoms such as fever, cough or trouble breathing.

Your health care provider can order a COVID-19 diagnostic test.

- If your health care provider determines you should be tested for COVID-19, they will order the test and help coordinate testing. In some cases the health care provider will collect the specimen and, in other cases, will refer the member for testing.

If referred for testing, contact the COVID-19 diagnostic testing location before arriving to:

- Find out what information you must bring
- Confirm hours of operation and availability
- Confirm the testing location is in-network
- Confirm the testing location is using a FDA-authorized test
- Ask how long before test results are known. If possible, choose a location with a maximum turn around time of 3-5 days.

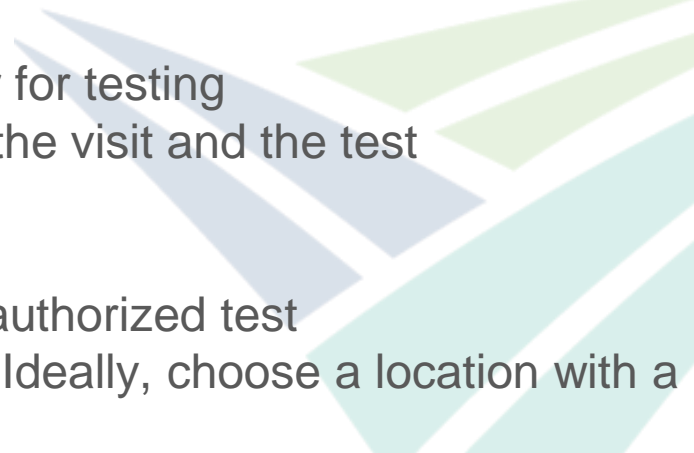
If additional testing sites are needed, an online listings of testing sites can be found on [2-1-1](#).

If your employee is uninsured:

If your employee does not have health insurance, or a regular source of care, **an online listings of free testing sites can be found on the [TCHD website](#).**

**You can also direct employees to the online listings of testing sites on [2-1-1](#).
Not all sites listed are free.**

Before going to a testing site, contact the site before arriving to:

- Find out if you meet testing criteria
 - Find out if you have to have a provider order for testing
 - Find out the costs- ask about costs for both the visit and the test
 - Find out what information you must bring
 - Confirm hours of operation and availability
 - Confirm the testing location is using a FDA-authorized test
 - Ask how long before test results are known. Ideally, choose a location with a maximum turn around time of 3-5 days.
- 

Alternative Testing Settings:

- **Two primary settings in which testing is occurring:**
 - An individual is seen in a health care setting and a sample is collected by a health care provider. Examples: hospital, doctor's office, urgent care center.
 - An individual is seen at a community testing site and a sample is collected by trained staff. Example: Drive through testing at the Pepsi Center.
- **Alternative options for testing include:**
 - Providers conduct a visit in the home, collect the specimen from the homebound individual and the sample is sent to the lab for processing. Example (not an endorsement from TCHD): Dispatch Health.
 - At-home COVID-19 tests: The specimen is collected in the home and mailed to a lab for processing without requiring a physical visit to a provider. Currently, eight companies are selling at-home tests authorized by the FDA.
 - Providers partner with businesses to conduct testing of employees at the workplace. Example: The National Guard testing workers in long term care facilities.

TCHD is Here to Help!

- [TCHD Business Re-Opening Task Force](#)
- New! TCHD School/Childcare Branch currently being stood up
- **Community Testing Branch:**
 - TCHD is available to provide support to community partners, clinics, health systems to direct to resources and guidance developed by the state. Contact: Laura Don ldon@tchd.org
 - [TCHD Testing Website](#) with free testing locations and isolation/quarantine guidance
 - Other testing sites listed on [2-1-1](#)
- **COVID-19 Data Portal:**
 - [Case Data and municipality level dashboards.](#)
- **Other Testing Resources:**
 - **Equity Resources for Testing Site Planning:**
 - CDPHE [COVID-19 - Equitable Testing Guidance for Testing Sites](#)
 - MDPH [COVID-19 Public Health Strategies for Priority Populations](#)
- **Other Ways to Help:** Promote business reopening, school task force resources and the [“Living with COVID-19”](#) campaign to your community

Questions?



THANK YOU!!

Laura Don

**Regional Health Connector
Community Testing Branch**

ldon@tchd.org

Meghan Prentiss

**Regional Health Connector
Community Testing Branch**

mprentiss@tchd.org

Wendy Nading

**Nurse Manager
Community Testing Branch**

wnading@tchd.org