



# Airshed Designations: A Tribal Perspective

NTFAQ

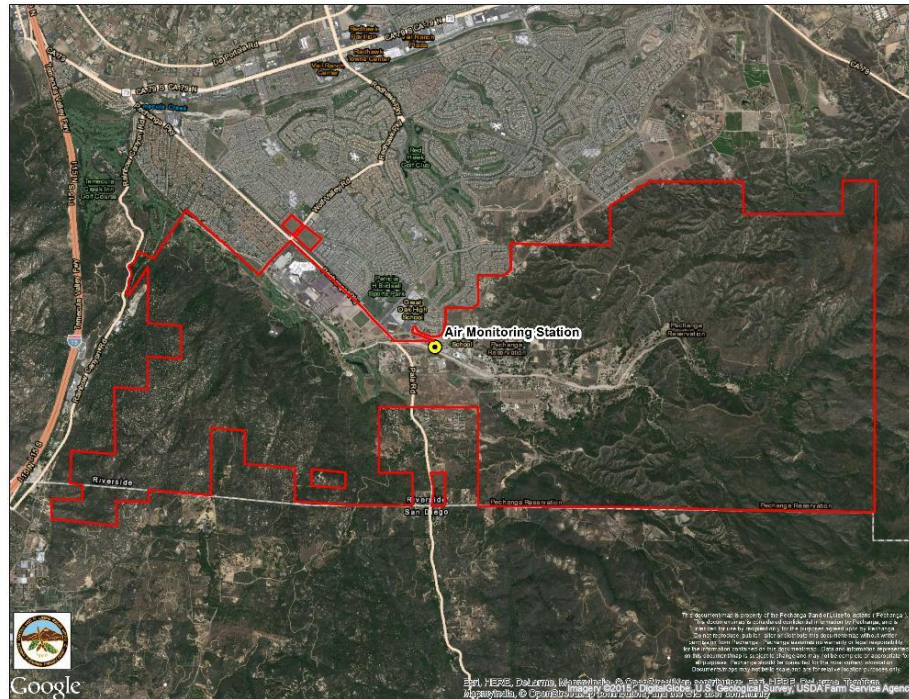
MAY 9

KELCEY STRICKER

# Separate Air Quality Planning Area

- ▶ My first day as Director for the Pechanga Band, I was on the phone with EPA and Council talking all about air...
- ▶ Generally:
  - ▶ Set up air program
  - ▶ Create and have approved a QAPP
  - ▶ Get TAS
  - ▶ Collect 3 consecutive years of data
  - ▶ Create and submit TIP
  - ▶ Request separate air quality planning area
  - ▶ Get approved, CONGRATULATIONS! You are an air district

# Pechanga's Air Program (In Brief)



# A little bit about South Coast AQMD

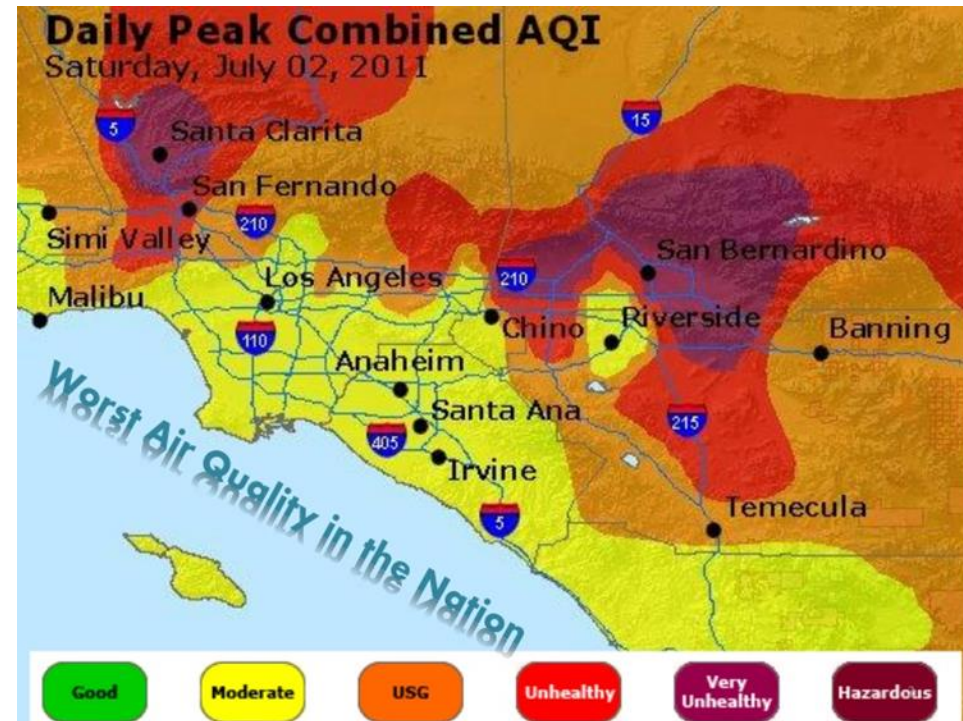
## Is Riverside County to Blame for its "Smog Belt" & Failing Air Quality?

Smog knows no jurisdictional bounds, and there are few better examples of this than in the Inland Empire of Southern California. The brown haze that forms over the area in the summer time has given San Bernardino and Riverside counties names such as the "SMOG Belt," and although it has improved in recent years, air

by Taylor York | November 28, 2014 | 0 Comments



<http://theglobalgrid.org/is-riverside-county-to-blame-for-its-smog-belt-failing-air-quality/c>



<http://www.slideshare.net/CALSTART/miyasato-scaqmd-presentation>



# Docket Number EPA-R09-OAR-2014-0869

- ▶ January 15, 2015, EPA proposed “Approval of Tribal Implementation Plan and Designation of Air Quality Planning Areas: Pechanga Band of Luiseno Mission Indians: Proposed Rule
- ▶ February 5, 2015, SCQAMD submitted comments on the is proposed rule
- ▶ Arguments included: “(1)the use of monitoring data from outside the areas to determine the area’s attainment status,” “(4) unjustified reliance on control measures outside the reservation area which do not apply on Tribal lands,” “(5) potential errors in the emissions inventory,”

# SCAQMD Arguments

- ▶ Used misleading data analysis to compare station sites
  - ▶ Temecula: 2014 0.065 ppm (January-March)
  - ▶ Pechanga 2014 0.079 (January-June)
    - ▶ \*Of note, CA Governor declared a state of emergency Jan. 2015 due to a 4<sup>th</sup> year of record-breaking drought
- ▶ CARB's vehicle standards apply to everyone; event those driving on the Reservation
- ▶ Emissions Inventory (500 versus 800 residents), 40,000 casino guests each week

# SCAQMD

- ▶ “Finally, the SCAQMD is concerned that EPA’s proposed action will set an **unfortunate precedent for other Native American tribes to try to secede from the South Coast Air Basin**, thus gaining a significant competitive advantage and potentially attracting significant amounts of new emissions, and may encourage other downwind areas to try to rely on South Coast emission reductions, with minimal local controls, to demonstrate attainment in their own areas.”

# SCAQMD Sued EPA Over the Final Rulemaking

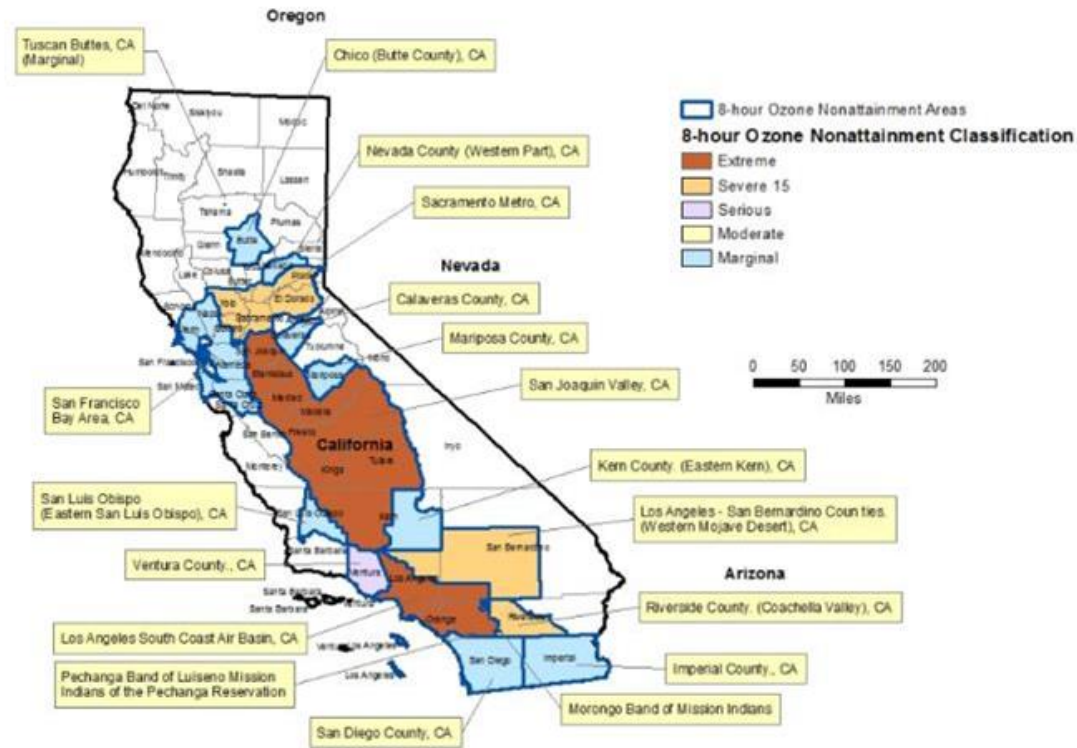
- ▶ June 2016—SCQAMD proposed a settlement
  - ▶ Proposed conditions included standard notices regarding permitting, an agreement that Pechanga continue operating its air station (funding permitted) and an agreement to “work cooperatively on an updated Emissions Inventory”
- ▶ Pechanga did not agree to “working cooperatively on an updated Emissions Inventory”
- ▶ In the end, the MOA signed between Pechanga and South Coast outlines a relationship that can best be described as neighboring air districts



# Pechanga Air District!

California 8-hour Ozone Nonattainment Areas (2008 Standard)

7/2012



# Pechanga Air District!

- ▶ Voluntary reduction in boiler usage (7,500 hours/unit/year)
- ▶ Voluntary reduction in emergency generator usage (100 hours/unit/year)
- ▶ No idling policy for buses
- ▶ Vehicle plug-in stations
- ▶ Food waste recycling
- ▶ Battery powered golf carts
- ▶ Bussing for guests
  - ▶ CNG busses coming soon!



# Questions?

