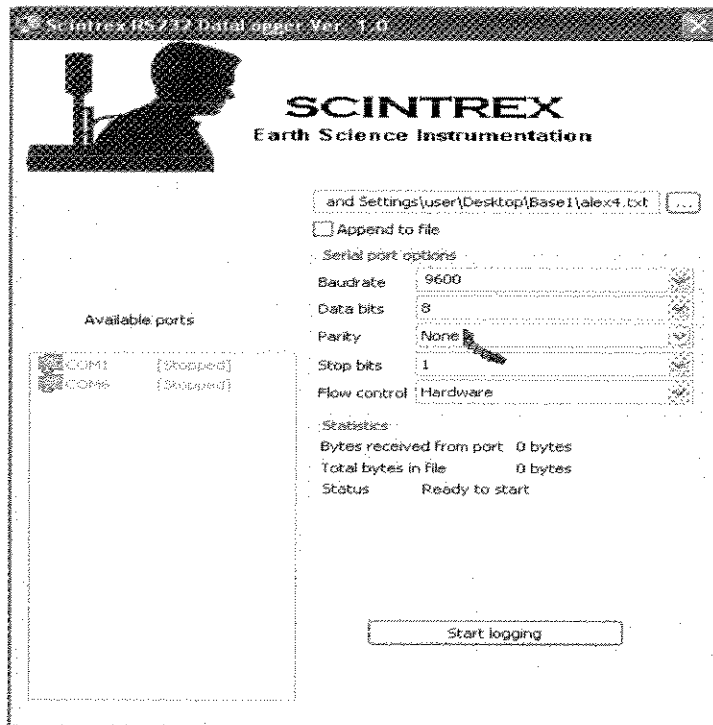


SCINTREX RS232 DATA LOGGER- Quick Start

Description: RS232 data capture Scintrex instruments.. to PC file .
RS232 communication only (USB-Rs232 dongle OK as well. Supported by Microsoft Vista and lower, operating systems



- **Available Ports:** Automatic detection of available COM ports on the PC. Select one by clicking on your choice. Connect Rs232 cable between that COM port and Scintrex instrument.
- **Serial Port Options:** Select the baud rate, data bits, Parity, Stop bits, Flow control ... according to Scintrex instrument used (check instrument user manual)
- **Logging File:** Press dialog button and select or enter the name of destination data file.
- **Append To File:** Select to add data to existing file . New data appended .
- **Start Logging Button:** When ready to log press this button (the same used to stop logging ... toggle) Activate Scintrex instrument data dump (user manual)
- **Statistics:** Reports received data bytes in real time . When data transferred *bytes received and total bytes* will stop updating . At this point press Stop logging button.

Text file will be created . (??? .txt) Open using Microsoft Word application .