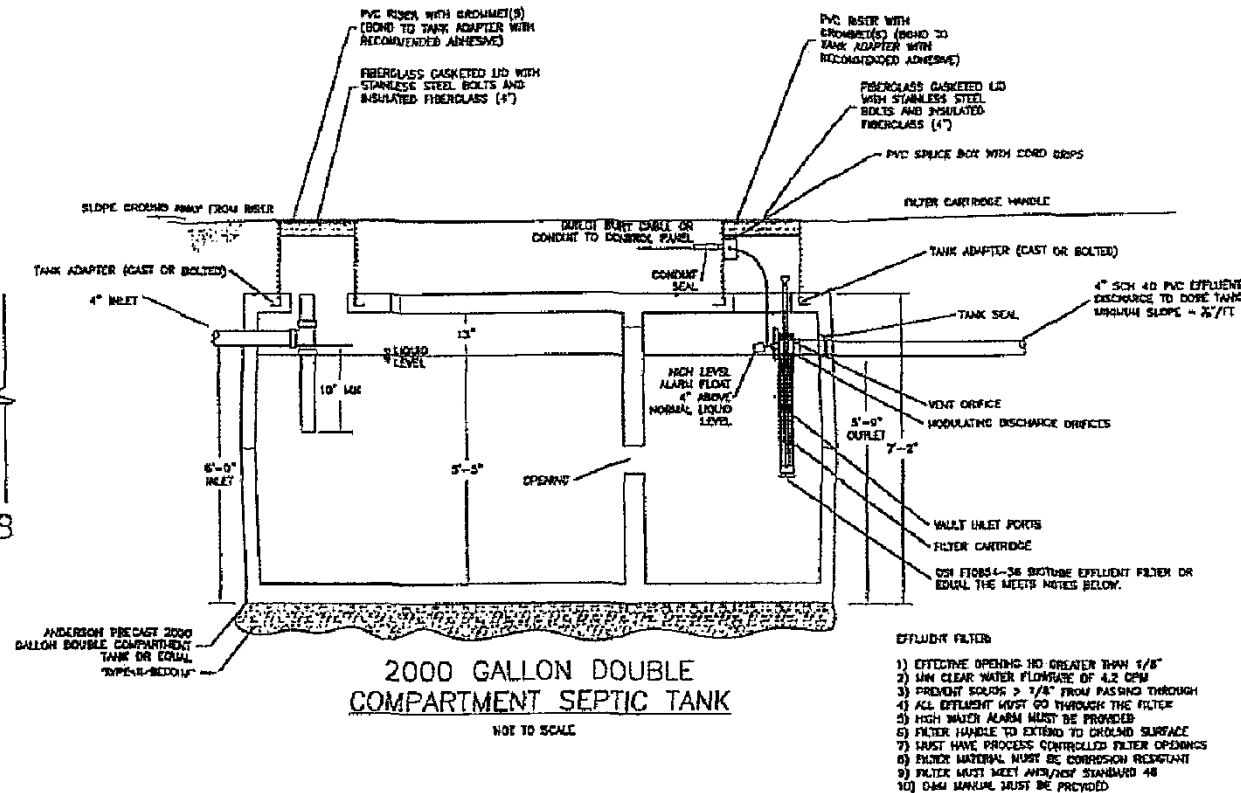
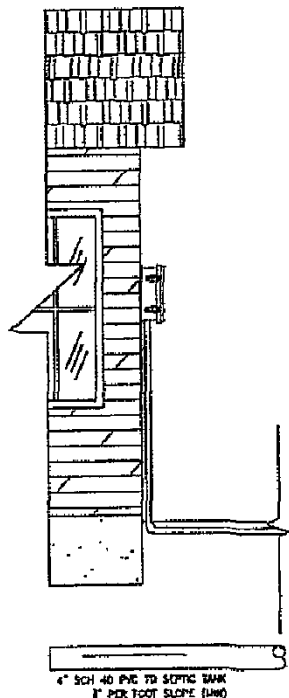


**NOT IN CONTRACT**

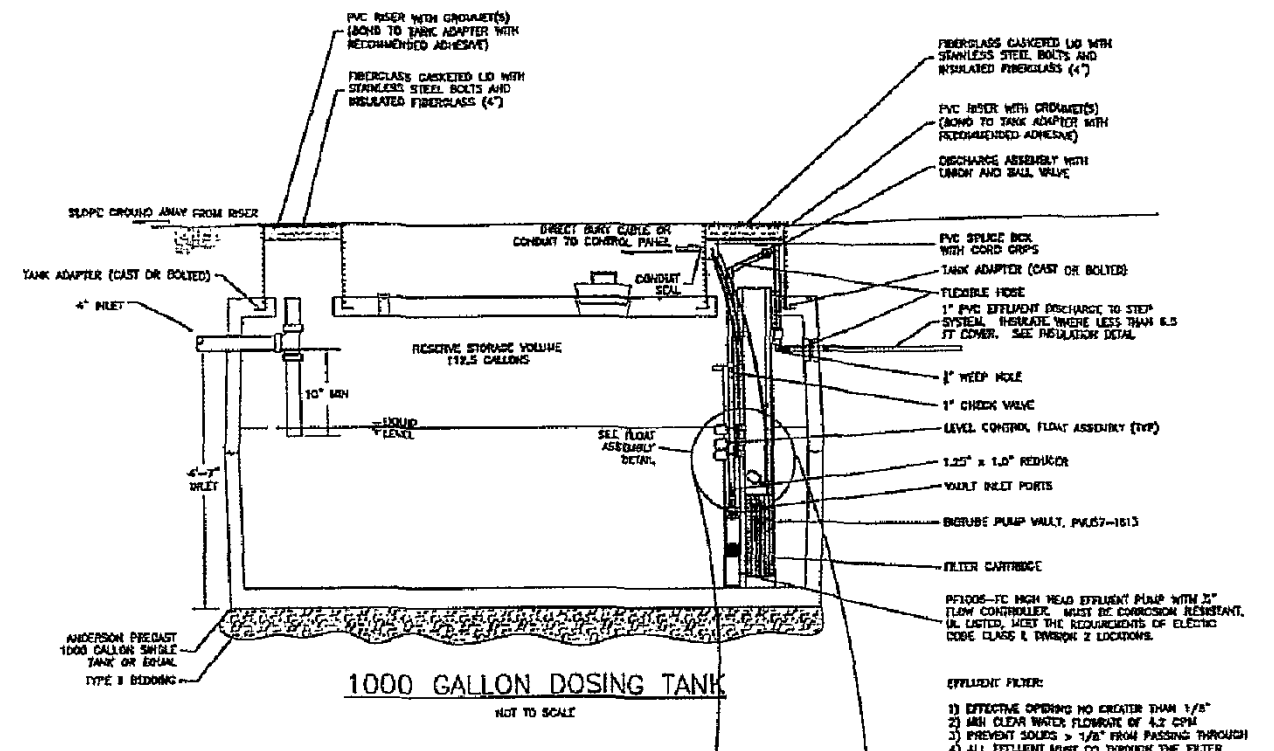
COMPONENTS ON THIS SHEET ARE TO DEMONSTRATE THE HOMEOWNERS REQUIREMENTS FOR SEWER STEP SYSTEM. INSTALLING CONTRACTOR SHALL OBTAIN A MADISON COUNTY SEPTIC SYSTEM PERMIT PRIOR TO INSTALLATION.

**NOTES:**

1. MAINTAIN MINIMUM 10' SEPARATION BETWEEN SEPTIC TANK/DOSING TANK AND STRUCTURES
2. MAINTAIN MINIMUM 50 FEET FROM SEPTIC/DOSING TANK AND WELLS
3. DOSE PUMP SHALL BE DESIGNED BY AN ENGINEER WITH A SIGNATURE OF 3 FLOORS: PUMP OFF, PUMP ON, AND HIGH WATER ALARM.
4. MAINTAIN MINIMUM 50 FEET SEPARATION BETWEEN SEPTIC TANK/DOSING TANK AND SURFACE WATER AND/OR WETLANDS



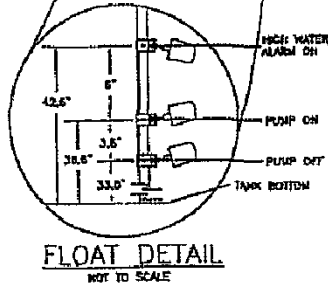
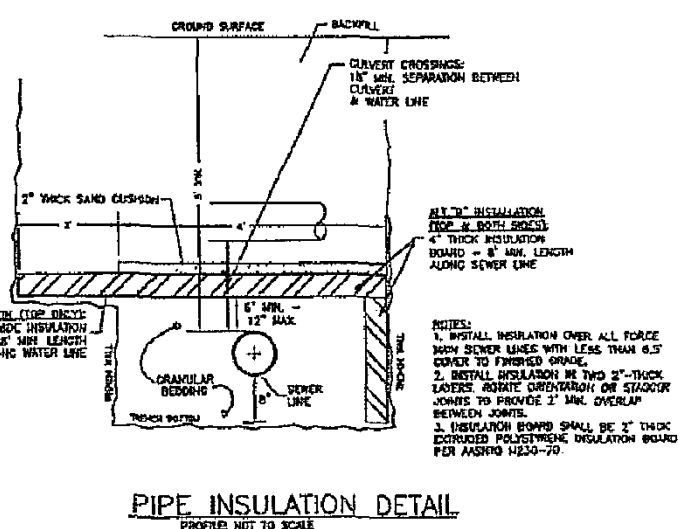
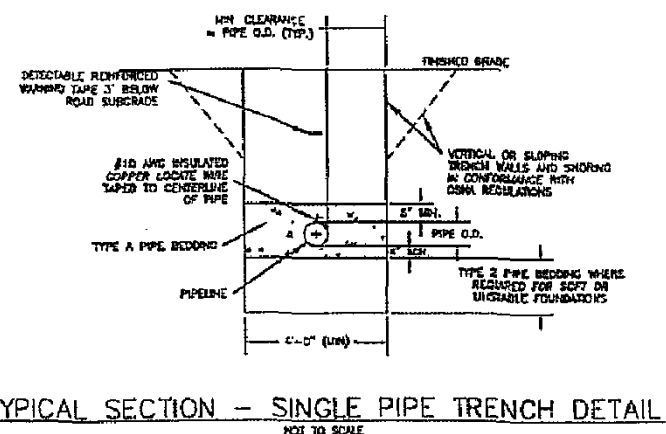
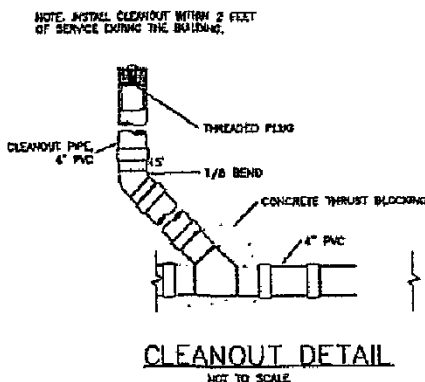
- EFFLUENT FILTER:**
- 1) EFFECTIVE OPENING NO GREATER THAN 1/8"
  - 2) MIN CLEAR WATER FLOWRATE OF 4.2 GPM
  - 3) PREVENT SOLIDS > 1/8" FROM PASSING THROUGH
  - 4) ALL EFFLUENT MUST GO THROUGH THE FILTER
  - 5) HIGH WATER ALARM MUST BE PROVIDED
  - 6) FILTER HANDLE TO EXTEND TO GROUND SURFACE
  - 7) MUST HAVE PROCESS CONTROLLED FILTER OPENINGS
  - 8) FILTER MATERIAL MUST BE CORROSION RESISTANT
  - 9) FILTER MUST MEET ANSI/NSF STANDARD 42
  - 10) OSM MANUAL MUST BE PROVIDED



- EFFLUENT FILTER:**
- 1) EFFECTIVE OPENING NO GREATER THAN 1/8"
  - 2) MIN CLEAR WATER FLOWRATE OF 4.2 GPM
  - 3) PREVENT SOLIDS > 1/8" FROM PASSING THROUGH
  - 4) ALL EFFLUENT MUST GO THROUGH THE FILTER
  - 5) HIGH WATER ALARM MUST BE PROVIDED
  - 6) FILTER HANDLE TO EXTEND TO GROUND SURFACE
  - 7) MUST HAVE PROCESS CONTROLLED FILTER OPENINGS
  - 8) FILTER MATERIAL MUST BE CORROSION RESISTANT
  - 9) FILTER MUST MEET ANSI/NSF STANDARD 42
  - 10) OSM MANUAL MUST BE PROVIDED

**TABLE D-1-1**

LOT #	SPECIFIED EFFLUENT PUMP	MAX O.C.D.	MAX T.O.H.F.T.
23	ORNDORF HIGH HEAD PF1005-FC	11.5	27.3
24	ORNDORF HIGH HEAD PF1005-FC	10.6	27.8
25	ORNDORF HIGH HEAD PF1005-FC	10.3	28.7
26	ORNDORF HIGH HEAD PF1005-FC	10.8	49.0
43	ORNDORF HIGH HEAD PF1005-FC	11.5	28.3
54	ORNDORF HIGH HEAD PF1005-FC	11.1	41.5
55	ORNDORF HIGH HEAD PF1005-FC	10.4	27.1
56	ORNDORF HIGH HEAD PF1005-FC	9.8	28.3
57	ORNDORF HIGH HEAD PF1005-FC	9.7	30.1
58	ORNDORF HIGH HEAD PF1005-FC	11.4	27.8
59	ORNDORF HIGH HEAD PF1005-FC	11.8	21.5



DETAIL NO.:	<b>BIG SKY WSD 363 STANDARD DRAWING</b>	SCALE:	NONE	DATE:	JUNE 2010
BSWSD: 27-16				"STEP" INSTALLATION PLAN SHEET- PHASE 1B & 1C	LAST REVISION: JUNE 7, 2010
				CROSS REFERENCE WITH:	N/A