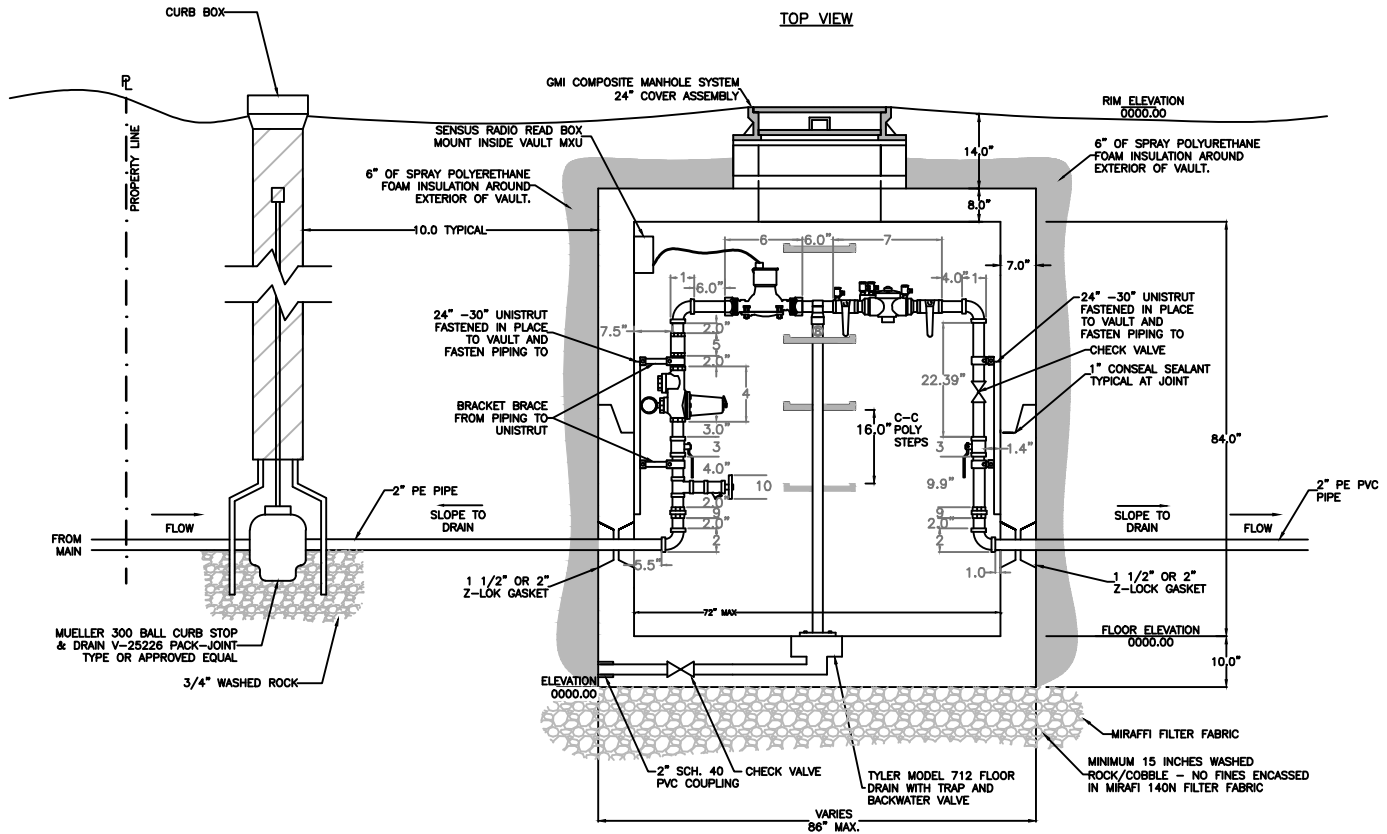


TOP VIEW



SIDE VIEW

ITEM DESCRIPTION

1. 2" MUELLER OR FORD 90° ELBOW (3.0" LONG)
2. 2" MUELLER P15533 PACK JOINT CONNECTION 90° ELBOW (3.0" LONG)
3. WATTS WBV-3 BALL VALVE (3.9" LONG)
4. WATTS SERIES S5B-PRV (10.875" LONG)
5. MUELLER SERIES 600 BRONZE - SINGLE CHECK VALVE (4.5" LONG)
6. WATTS BRONZE METER FLANGE (15.25" LONG)
7. WATTS SERIES 009 REDUCED PRESSURE ASSEMBLY (21.375" LONG)
8. STANDON S92-02 SADDLE SUPPORT
9. 2" MUELLER COPPER OR BRONZE PIPE UNION (2.5" LONG)
10. 2" SOLDER "T" WITH 1"-2" BALL/GATE VALVE HOSE BIB (3.9" LONG)

NOTES:

- A. 6" DIAMETER IRRIGATION WATER VAULT BY ANDERSON PRE-CAST OF BOZEMAN OR BSWSD APPROVED EQUAL
- B. MANUFACTURED TO ASTM C-478
- C. RECESSED LIFTING POINTS IN ALL SECTIONS
- D. MONOLITHIC TOP/BASE WITH WALLS
- E. Z-LOK GASKETS TO FIT 1 1/2" OR 2" DIAMETER PIPE
- F. M-A INDUSTRIES MANHOLE STEPS
- G. GMI COMPOSITE MANHOLE COVER
- H. CEMENT IS TYPE V
- I. ALL CONCRETE IS 4500 PSI WITH 5% AIR ENTRAINMENT
- J. ALL PARTS MUST BE APPROVED BY BSWSD 363

VAULT PIPING

- HARD RIGID TYPE "L" COPPER
- 2" SCHEDULE 40 BRASS PIPE 230

VAULT FITTINGS

- THREADED/FLANGED IPS - BRASS OR BRONZE
- COPPER PIPE FITTINGS AND CONNECTIONS

VAULT PIPING ANCHORS

- UNISTRUT 1 1/2" - METAL FRAMING SYSTEM COMPONENTS
- UNISTRUT CUSH - A CLAMP ASSEMBLY PIPE/TUBE CLAMPS

NOTE:

OPTIONAL 2" PE IRRIGATION SERVICE PIPE STUB FOR 2-1/8" MUELLER OR MAINGUARD #77 POST-TYPE BLOW-OFF HYDRANT OR BSWSD APPROVED EQUAL (INSTALL ON VERTICAL ON THE INLET SIDE)

DETAIL NO.:

**BIG SKY WSD 363  
STANDARD DRAWING**

SCALE:  
NONE

IRRIGATION WATER  
VAULT - VERTICAL  
PLUMBING INSTALLATION

DATE:

FEBRUARY 2010

LAST REVISION:

MAY 11, 2010

CROSS REFERENCE WITH:

N/A

BSWSD:  
26-29 A