

# Long-Term Care Death Data – October 5, 2020

	January	February	March	April	May	June	TOTAL
2014	2130	1804	2002	1945	1777	1532	11190
2015	2490	2082	2091	1909	1715	1519	11806
2016	1974	1913	2041	1882	1822	1484	11116
2017	2477	2019	2057	1750	1702	1642	11647
2018	2610	2229	2214	1984	1835	1622	12494
2019	2132	2058	2040	1888	1842	1643	11603
2020	2183	1896	2070	3066	2322	1419	12956
AVG 14-19	2302	2018	2074	1893	1782	1574	11643
2020 from AVG	-119	-122	-4	1173	540	-155	1313
2020 change from 2018	-427	-333	-144	1082	487	-203	462

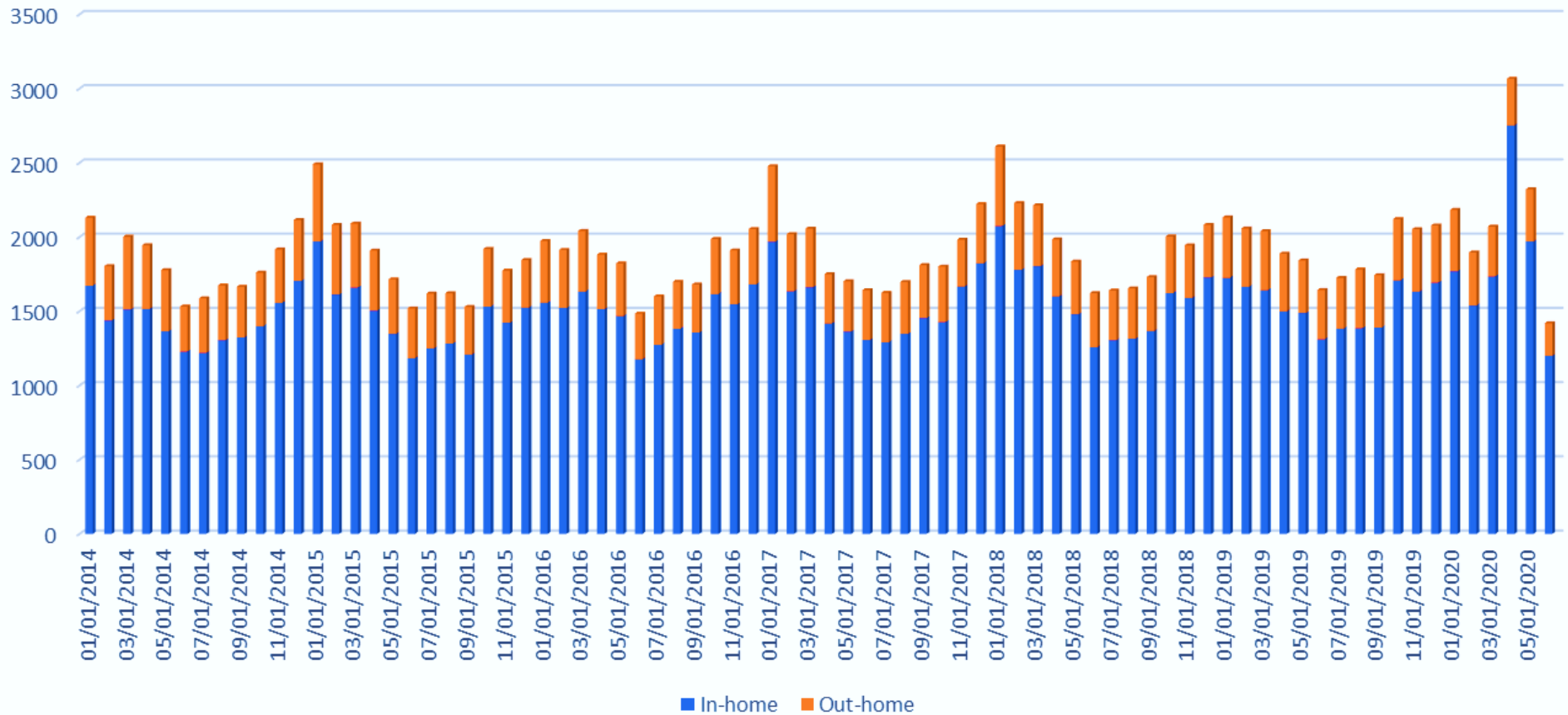
Source: Ministry of Long-Term Care

**In the first six months of 2020:**

- There were 12,956 deaths in Ontario LTC homes
- That is 462 more in 2020 than the next highest year (2018)
- There were 1,313 more total deaths than the average of January to June in 2014-19
- In June there were 203 fewer deaths than the average of 2014-19
- In January, February and March, there were fewer than average monthly deaths in LTC
- In January, February, March and June there were fewer deaths in LTC when compared to 2018 – a particularly bad flu year

	JAN	FEB	MAR	APR	MAY	JUN	JUL	AUG	SEPT	OCT	NOV	DEC	Monthly Avg
2014	2130	1804	2002	1945	1777	1532	1587	1674	1665	1760	1917	2115	1826
2015	2490	2082	2091	1909	1715	1519	1619	1621	1529	1920	1774	1845	1843
2016	1974	1913	2041	1882	1822	1484	1600	1698	1680	1987	1910	2054	1837
2017	2477	2019	2057	1750	1702	1642	1624	1697	1811	1801	1982	2222	1899
2018	2610	2229	2214	1984	1835	1622	1640	1654	1730	2004	1944	2082	1962
2019	2132	2058	2040	1888	1842	1643	1725	1782	1743	2121	2053	2078	1925
2020	2183	1896	2070	3066	2322	1419							2159
AVG 2014-19	2302	2018	2074	1893	1782	1574							1940
2020 from AVG	-119	-122	-4	1173	540	-155							
2020 change from 2018	-427	-333	-144	1082	487	-203							

## Long Term Care Home Deaths from January 2014 to June 2020



Source: Ministry of Long-Term Care