

EdgeStar

Stainless Steel Intercept®



EdgeStar Stainless Steel Coil is system matched and guaranteed to run on GED Intercept® Ultra Spacer System.

The Intercept® Ultra Spacer System is the highest productivity and lowest cost warm edge spacer system.

EdgeStar Stainless spacers enhance Warm-Edge technology, which reduces heat transfer at the edge of an IG unit. Intercept® Ultra Stainless Steel is impervious to gas transmission, which significant improvement of strength and gas retention over other spacer systems. This improvement allows manufacturers to meet Energy Star performance requirements.

Leading Edge is the only supplier approved by GED for all equipment materials. ie: 301 Stainless Steel, Tin Plate, Thin Tin Plate, and Coated Aluminum. As a result, GED honors equipment warranties and provides peace of mind that IG quality and performance are not compromised with unapproved materials.

User Benefits

- Enhanced Warm Edge Technology
- Improved Strength and Gas Retention
- Improved overall Thermal Performance
- Meets Energy Star Requirements

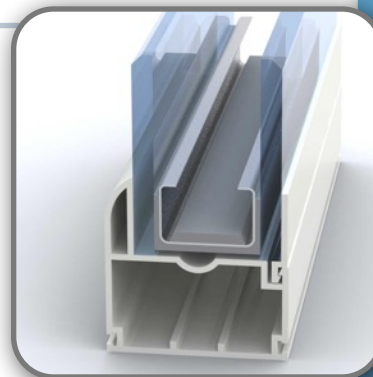
Leading Edge Benefits

- System Matched for GED® Ultra Systems
- ALL Prime Material
- Stocked Sizes across N. America
- Competitive Prices



Technical Specifications

Compliances:	Energy Star GED Intercept®	H.B. Fuller TMHM-067 Kommerling NFRC
Material Thickness:	0.0078" +/- 0.0004	
Cut Slit Width Tolerance:	+.000" /-.005" Burr-Free Edge	
Coil Core Size I.D.:	16"	
Coil O.D.:	36" Maximum	3
Coil Weight of 1" wide:	225# (approximately)	
Linear feet/coil:	8500 ft (approximately)	



Performance Data

MANUFACTURER SPECIFIC THERMOPHYSICAL PROPERTY VALUES OF MATERIALS

EdgeStar	Density ρ	Conductivity k			Emissivity ϵ^1
		W/m•K	Btu/hr•ft•F	Btu•in/hr•ft ² •°F	
LED SST Coil	7,720	13.467	7.781	93.37	-

* ThinStar® Tin Plate Intercept is interchangeable with EdgeStar® Stainless Steel Intercept on Ultra Systems equipped with the proper tooling. Ask us about this and any other products from LED.

ThinStar

Intercept Ultra™ Tin Plate

Leading Edge's ThinStar was developed to interchange with .0078 gauge EdgeStar stainless steel for GED's Ultra Spacer System. ThinStar provides the option of less expensive tin plate material where the performance and additional cost of stainless is unnecessary. GED and LED have worked together to develop this unique alloy resulting in this value added product. Additionally, GED has exclusively designated and supports LED as the "approved supplier" of ThinStar.

In today's window performance driven environment, ThinStar offers a conductivity value of 51.6 as documented in NFRC's Appendix C "Thermophysical Property Values of Materials", Table C.1

LED's ThinStar is an example of our commitment to enhance current systems by providing savings through the development of alternative materials. Creating solutions, which result from understanding manufacturers needs, are a core strength of LED's exclusive focus to the W&D industry.

User Benefits

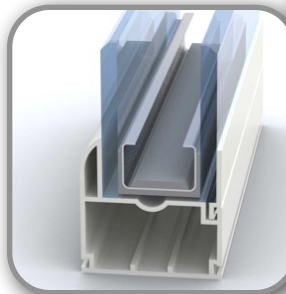
- Interchangeable with .0078 Ultra Stainless Steel Coil
- Lower Cost alternative to Stainless Steel
- Cost per linear foot comparable to Intercept tinplate
- Approved by major sealant / matrix suppliers
- Peace of mind with GED's extensive testing and support

Leading Edge Benefits

- GED's ThinStar "Approved Supplier"
- System Matched for GED® Ultra Systems
- Multiple products from single supply source
- Stocked Sizes across N. America
- Only supplier providing coil products specifically to W&D manufacturers

Technical Specifications

Compliances:	Energy Star	H.B. Fuller TMHM-067
	GED Intercept®	Kommerling
Material Thickness:	0.0078" +/- 0.0004	NFRC
Cut Slit Width Tolerance:	+.000" /-.005" Burr-Free Edge	
Coil Core Size I.D.:	16"	
Coil O.D.:	36" Maximum	
Coil Weight of 1" wide:	225# (approximately)	
Linear feet/coil:	8500 ft (approximately)	
** Proper tooling is required to run ThinStar on GED Ultra Spacer System		



Common Spacer / Coil Sizes

Stocked in our convenient locations throughout N.America



Spacer Size	Air Space	Slit Width	Lbs. Per Ft	34" OD Coil Weight
7/32"	1/4"	0.882	0.0239	180
1/4"	9/32"	0.913	0.0247	187
11/32"	3/8"	1.006	0.0273	206
13/32"	7/16"	1.069	0.029	219
15/32"	1/2"	1.131	0.0307	232
17/32"	9/16"	1.193	0.0323	246
19/32"	5/8"	1.257	0.0341	258
11/16"	23/32"	1.351	0.0366	277
23/32"	3/4"	1.383	0.0375	283
25/32"	13/16"	1.445	0.0392	296

Leading Edge Distribution

1333 Highland Rd Ste.C Macedonla, OH 44087 (440) 786-2444
www.leading edgedistribution.com