

Title : Figure 8 Angling

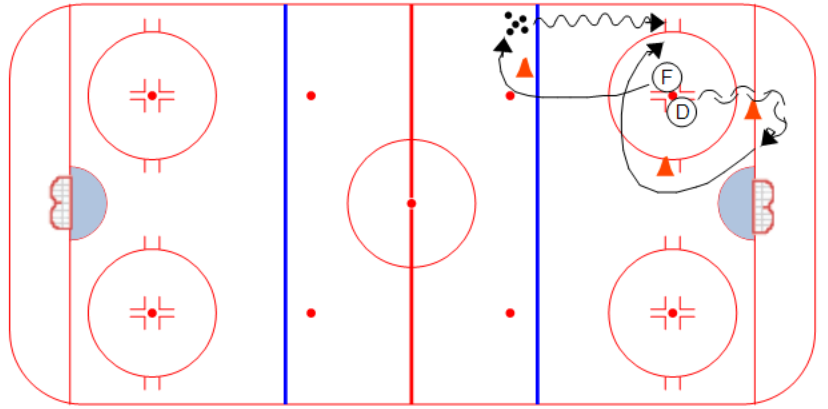
Category #1 : 1 on 1, 2 on 1, 3 on 2

Category #2 : Angling

**Description**

1. Players start facing each other on dot
2. F picks up a puck and drives wide
3. D skates around cones as shown, then angles
4. F has to drive around lower cone before cutting to the net

Variations: (a) take out the cone at hashmarks (b) allow forward to cut inside earlier



Key points :