

****SURVEYOR'S CERTIFICATION****

AS REQUIRED BY SUBSECTION (d) OF O.C.G.A. SECTION 15-6-67 THIS PLAT HAS BEEN PREPARED BY A LAND SURVEYOR. THIS PLAT HAS BEEN APPROVED BY ALL APPLICABLE LOCAL JURISDICTIONS THAT REQUIRE PRIOR APPROVAL FOR RECORDING THIS TYPE OF PLAT.

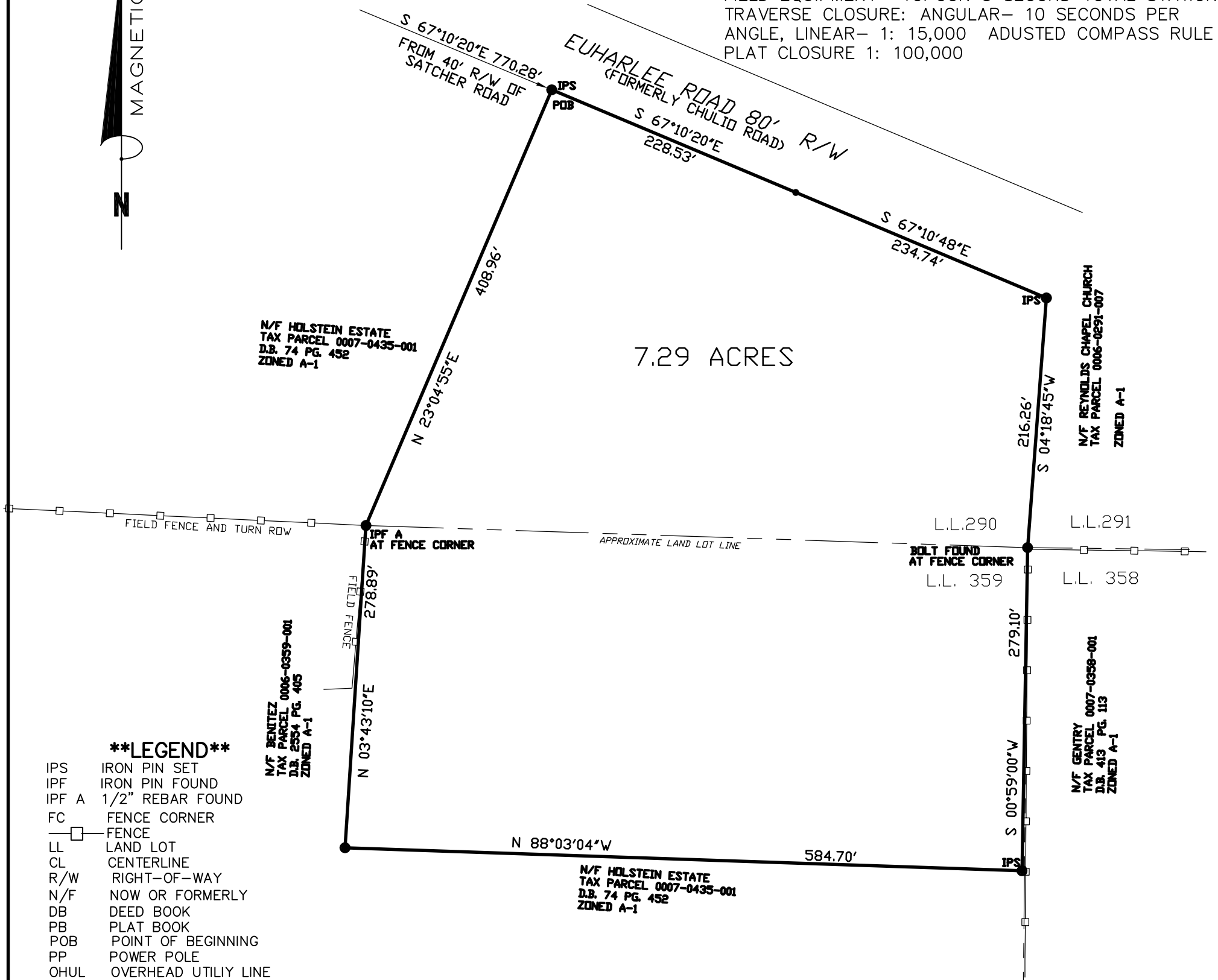
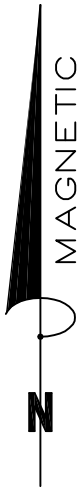
FURTHERMORE, THE UNDERSIGNED LAND SURVEYOR CERTIFIES THAT THIS PLAT COMPLIES WITH THE MINIMUM TECHNICAL STANDARDS FOR PROPERTY SURVEYS IN GEORGIA AS SET FORTH IN THE RULES AND REGULATIONS OF THE GEORGIA BOARD OF REGISTRATION FOR PROFESSIONAL ENGINEERS AND LAND SURVEYORS AND AS SET FORTH IN O.C.G.A. SECTION 15-6-67. ..



PAUL R. ROGERS GA. R.L.S. 2303 DATE _____
 APPROVAL BY GOVERNMENT BODY: _____

THIS SPACE RESERVED FOR THE CLERK OF SUPERIOR COURT

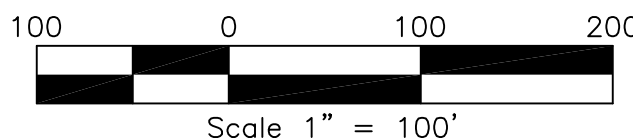
FIELD EQUIPMENT- TOPCON 5 SECOND TOTAL STATION
 TRAVERSE CLOSURE: ANGULAR- 10 SECONDS PER ANGLE, LINEAR- 1: 15,000 ADJUSTED COMPASS RULE
 PLAT CLOSURE 1: 100,000



****LEGEND****

- IPS IRON PIN SET
- IPF IRON PIN FOUND
- IPF A 1/2" REBAR FOUND
- FC FENCE CORNER
- FENCE
- LL LAND LOT
- CL CENTERLINE
- R/W RIGHT-OF-WAY
- N/F NOW OR FORMERLY
- DB DEED BOOK
- PB PLAT BOOK
- POB POINT OF BEGINNING
- PP POWER POLE
- OHUL OVERHEAD UTILITY LINE

MINOR SUBDIVISION SURVEY FOR
AL HOLSTEIN
 PART OF TAX PARCEL 0007-0435-001 ZONED A-1
 D.B. 74, PG. 452
 LOCATED IN LAND LOTS 290 & 359
 17th DISTRICT, 3rd SECTION
 BARTOW COUNTY, GEORGIA
 DATE OF FIELDWORK: OCTOBER 21, 2019
 DATE OF PLAT: OCTOBER 22, 2019



JOB NO. 19161A

RHODES ENGINEERING SERVICES, INC
CIVIL ENGINEERS AND LAND SURVEYORS
 645 HENDERSON DRIVE, SUITE 2
 CARTERSVILLE, GA 30120
 PHONE 770-386-7616 FAX 770-386-7617