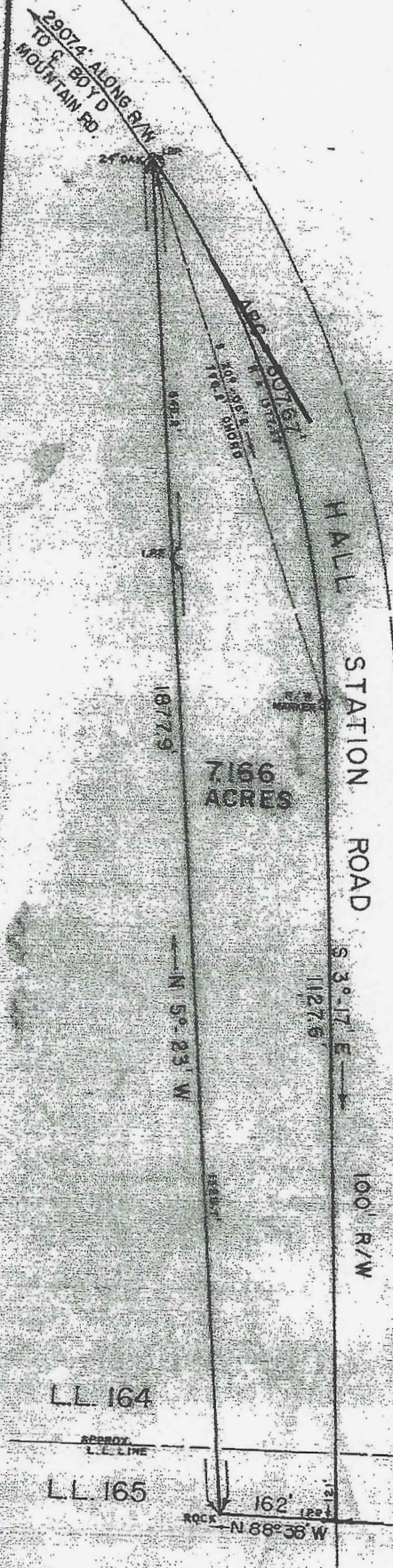


4/6/61

MARK A. TANKERSLEY
PROPERTY IN LAND LOTS 164 & 165
15TH DISTRICT, 3RD SECTION
BARTOW COUNTY, GEORGIA



SMITH & SMITH LAND SURVEYORS
CARTERSVILLE, GEORGIA

In my opinion this plat is a correct representation of the land stated and has been prepared in conformity with the minimum standards and requirements of law.

A. Lee Smith
REGISTERED LAND SURVEYOR No. 1309



SCALE: 1" = 200'
OCTOBER 26, 1973

All bearings are computed from one magnetic bearing taken from "A" to "B" and angles of the traverse. The traverse had a closure of 1 foot in 2,000 feet.

MAG. NORTH

FILE 1033