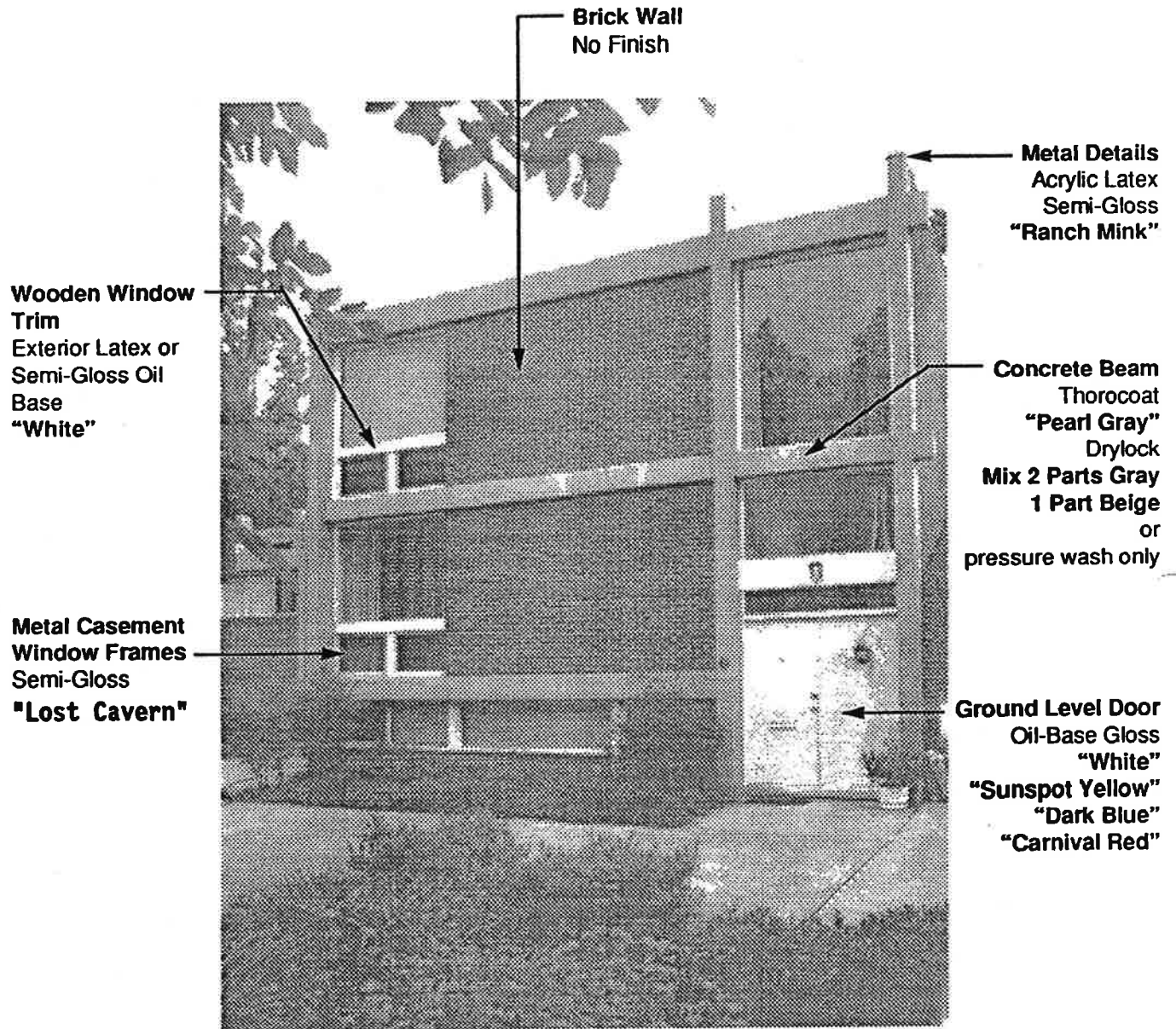


Interior Carport Walls (including new woodwork)	<u>Duron</u> acrylic latex semi-gloss or gloss 5414D Asteroid
Private Metalwork (carport bumper guards, balcony railings)	<u>Duron</u> exterior enamel semi-gloss 5414D Asteroid
Metal Casement Window Frames	<u>Duron</u> semi-gloss or gloss or White 5424D Lost Cavern
Other Metal Details (dryer vents, flashing for parapets and metal beams)	<u>Duron</u> acrylic latex semi-gloss or gloss 5335A Ranch Mink
Cluster Metalwork (railing balustrades, lamp posts)	<u>Duron</u> "Dura Clad" alkyd enamel gloss 5415A Train Smoke
Brick Walls, Block Columns	Natural Colors (Never paint) May be sealed with clear waterproofing material
Metalwork on Concrete Beams	Caps should overhang <u>only 1 to 2 inches</u> . For replacements, specify brushed aluminum or a color to match concrete beams. For existing caps with paint, use <u>Duron</u> exterior enamel semi-gloss 5414D Asteroid

Ground Level Doors (Color assigned to particular house)	<p><u>Pratt and Lambert</u> "Effecto" oil-base gloss White or Y0277Y Sunspot Yellow or</p> <p><u>Benjamin Moore</u> #34 Dark Blue</p> <p><u>Benjamin Moore</u> #23 Carnival Red</p>
Stucco Panels (Color assigned to particular house)	<p><u>Duron</u> "Dura Kote" acrylic latex flat White or 5413M Chapel Gray</p>
Wooden Fascia Board	<p><u>Duron</u> "Weathershield" acrylic latex semi-gloss 5414D Asteroid</p>
Concrete Block Patio Walls	<p><u>Duron</u> "Dura Kote" acrylic latex flat (if bare or acid-washed) or <u>Duron</u> "Weathershield" acrylic latex flat semi-gloss White (if primed or already painted) or 5414D Asteroid</p>
Wooden Window Trim	<p><u>Duron</u> "Weathershield" exterior latex or oil base, semi-gloss or gloss White</p>

Hickory Cluster Paint Palette

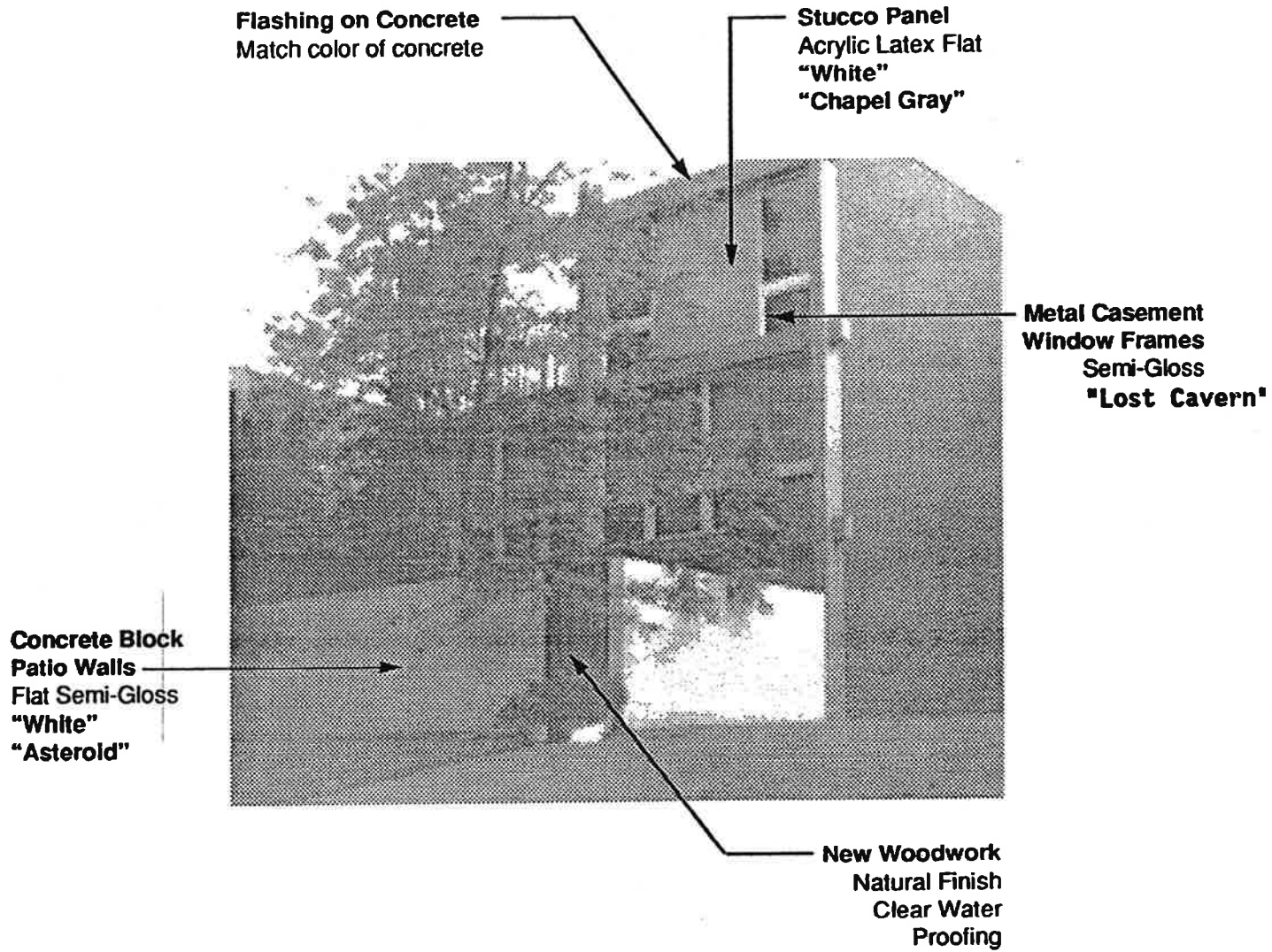
General Resolution #5, Appendix B



Revised August 10, 1993

Hickory Cluster Paint Palette

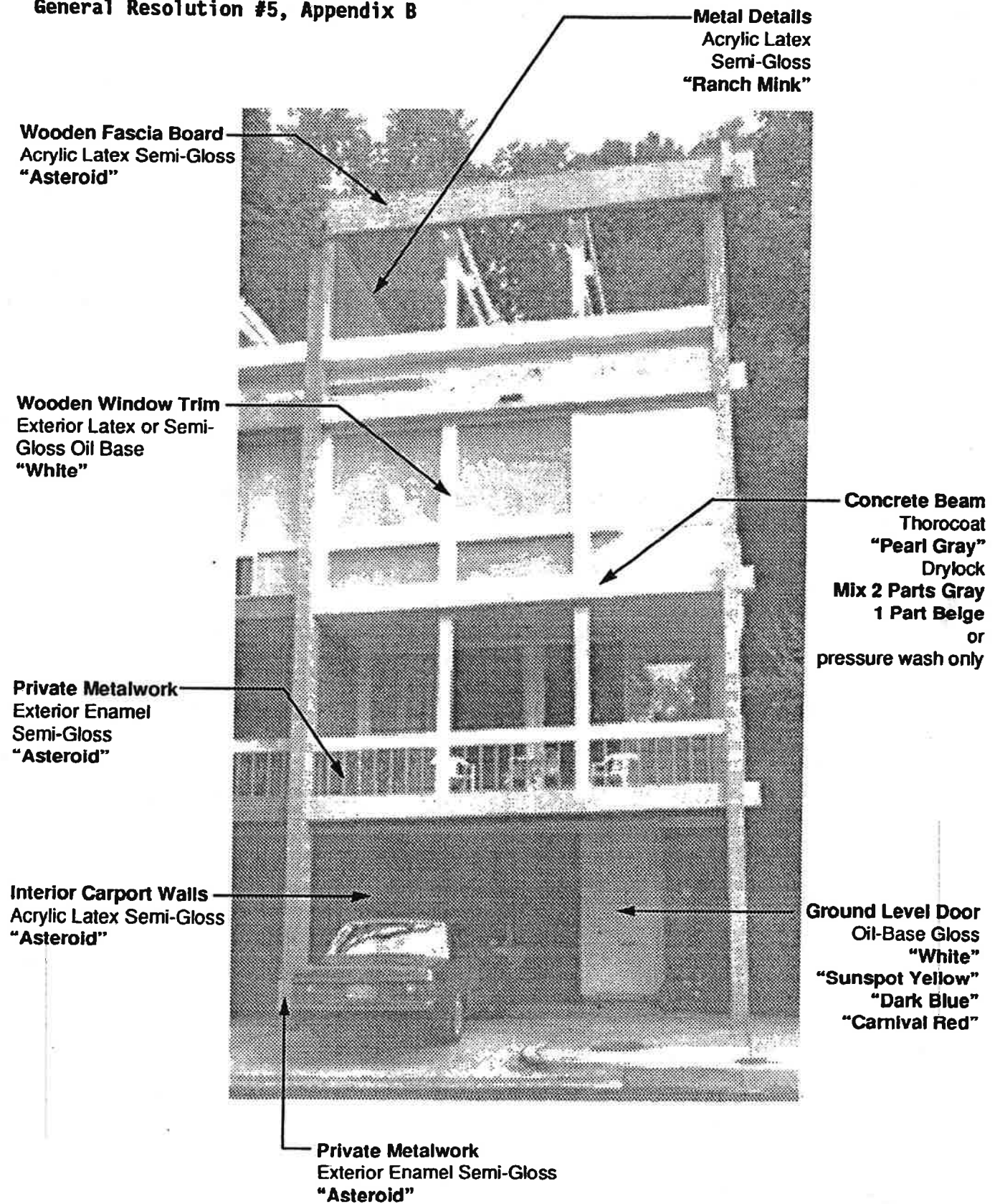
General Resolution #5, Appendix B



Revised August 10, 1993

Hickory Cluster Paint Palette

General Resolution #5, Appendix B



Revised August 10, 1993