

© 2017  
 Doug Circo, Architect  
 503-730-6908  
 14670 SW Forest Drive  
 Beaverton, OR 97007



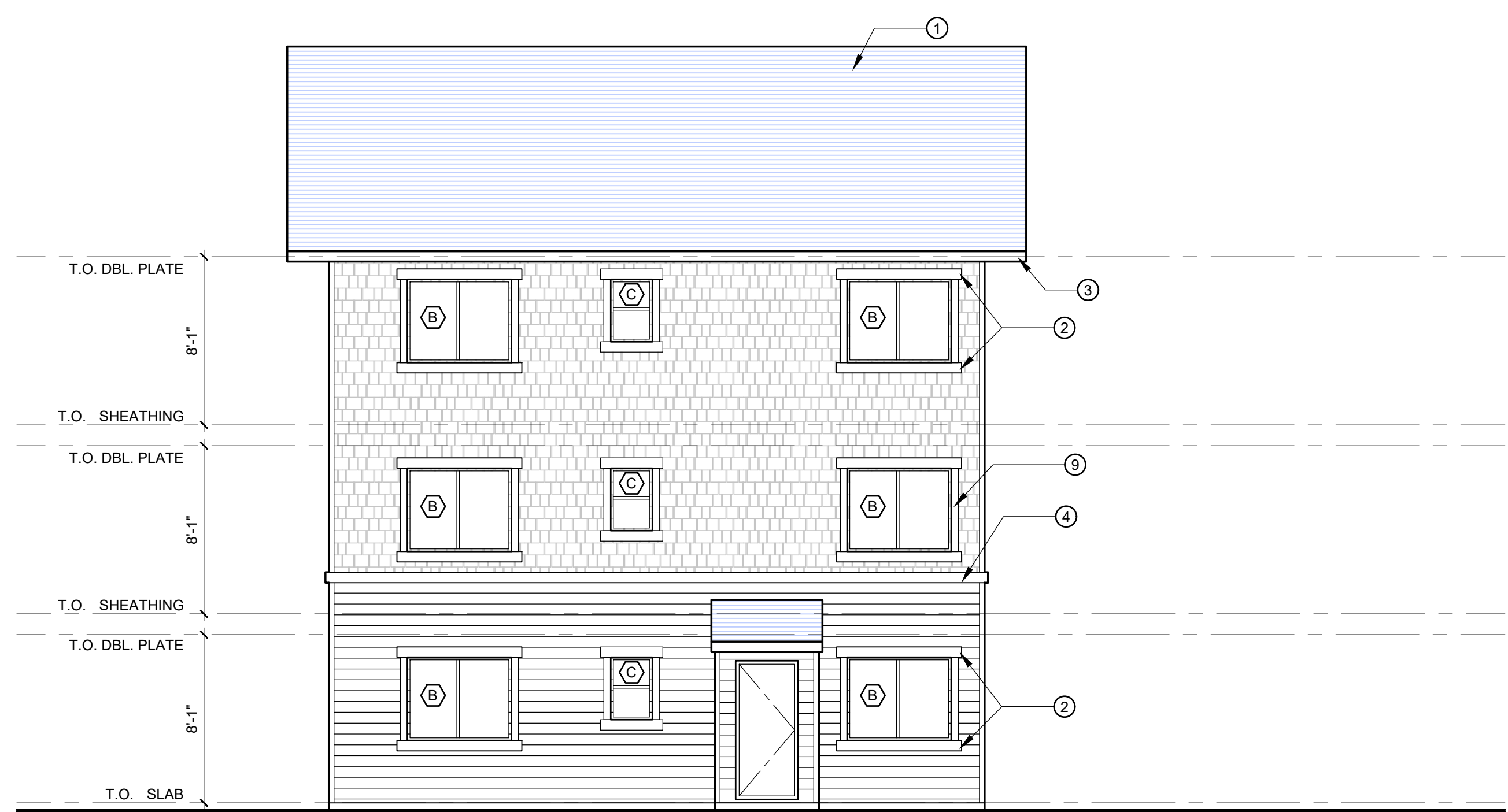
**2** BUILDING 100 - WEST ELEVATION  
 A200 3/16" = 1'-0"

- SYMBOL LEGEND**
- FIBER CEMENT LAP SIDING 7" EXPOSURE - PAINTED, SEE A601
  - FIBER CEMENT SHINGLE SIDING SEE A602
  - ASPHALT SHINGLE ROOFING SYSTEM

- SYMBOL LEGEND**
- WALL MOUNTED LIGHT FIXTURE - VERIFY FIXTURE TYPE AND MOUNTING HEIGHT PRIOR TO INSTALLING ELECTRICAL SERVICE BOXES - SEE A100 SITE PLAN FOR ADDITIONAL FIXTURE LOCATIONS.

- KEY NOTES**
- 1 ASPHALT SHINGLE ROOFING SYSTEM
  - 2 5/4x6 TRIM - PAINTED (EXTEND 2" EA. SIDE AT WINDOWS AS SHOWN)
  - 3 2x6 FASCIA - PAINTED
  - 4 5/4x6 TRIM - PAINTED
  - 5 5/4x10 TRIM - PAINTED
  - 6 WOOD CORBEL - PAINTED
  - 7 ELEVATED WALKWAY
  - 8 METAL GUARDRAIL
  - 9 5/4x4 TRIM - PAINTED
  - 10 SPRINKLER RISER ROOM WITH INSULATED METAL DOOR AND STORE ROOM LOCKSET.
  - 11 FIBER CEMENT PANEL SIDING SMOOTH TEXTURE - PAINTED

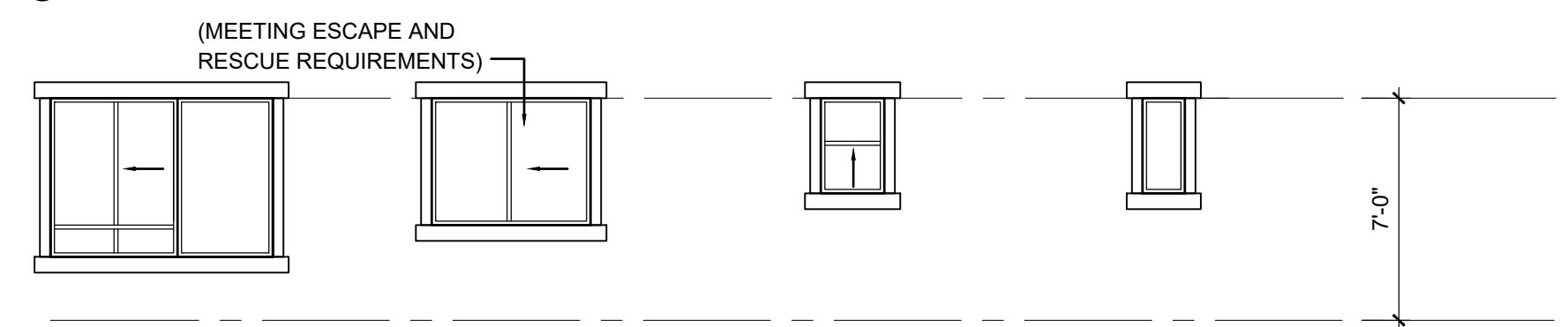
- GENERAL NOTES**
1. SEE ROOF PLAN AND BLDG. PLANS FOR GUTTER AND DOWNSPOUT LOCATIONS.



**1** BUILDING 100 - NORTH ELEVATION  
 A200 3/16" = 1'-0"

**WINDOW TYPES**

1. ALL WINDOWS TO BE DUAL PANE INSULATED VINYL WINDOW SYSTEM WITH MIN. U = 0.34, LOW-E GLAZING, AND MIN. SHGC = 0.30.
  2. FRAME COLOR: WHITE.
  3. WINDOW HEAD HEIGHT TO BE 7'-0" ABOVE FFL TYPICAL ON ALL FLOORS.
  4. PROVIDE TEMPERED SAFETY GLAZING AT ALL HAZARDOUS LOCATIONS AND AS INDICATED ON ELEVATIONS.
- Ⓡ TEMPERED SAFETY GLAZING



- A** 5040 SLIDING WINDOW WITH 2040 FIXED PICTURE WINDOW AND 5030 SIDELIGHT
- B** 5040 SLIDING WINDOW
- C** 3020 SINGLE HUNG WINDOW
- D** 3014 FIXED WINDOW

The Pacific  
 APARTMENTS  
 78TH AVENUE  
 VANCOUVER, WASHINGTON

job no.: 1707  
 date: 2-17-2018

BUILDING  
 ELEVATIONS

A200