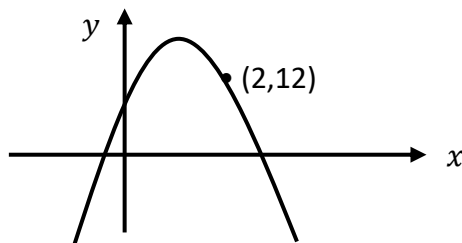


June Daily Tasks Days 8 - 14

8. The price of a new house is £210 000.
It appreciates in value by 4.5% each year for the next 3 years.
Work out the value of the house after this time. Round your answer correct to three significant figures.

9. The graph with equation $y = kx^2$ is shown below. Work out the value of k .



10. Change the subject of the formula below to Q .

$$P = \frac{3Q^2 + 7}{5}$$

11. Solve $2x^2 + 3x - 14 = 0$.

12. Calculate the magnitude of the vector \mathbf{p} where \mathbf{p} is $\begin{pmatrix} -4 \\ 8 \\ -1 \end{pmatrix}$.

13. Fully factorise each of these:

a) $4p^2 - 9$ b) $3a^2 - 75$ c) $2x^2 - 18$ d) $5a^2 - 5$

14. Evaluate the following and simplify your answers:

a) $\frac{5}{6} \times 2\frac{2}{3}$ b) $1\frac{3}{5} \div 3\frac{1}{3}$ c) $\frac{4}{5}$ of $(\frac{7}{8} - \frac{2}{3})$