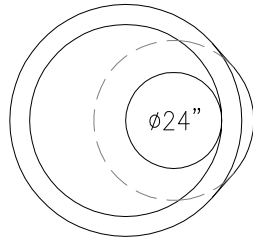
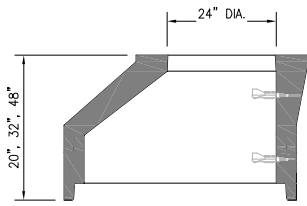
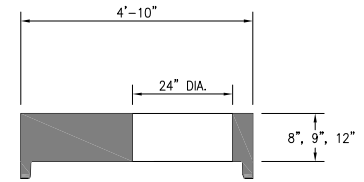
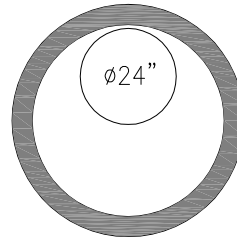


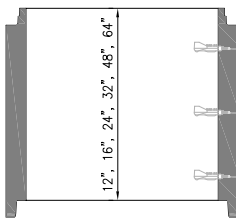
ECCENTRIC CONE



FLAT TOP OPENINGS



RISER



48"Ø RISER WEIGHTS

12"	= 867 lbs.
16"	= 1,156 lbs.
24"	= 1,734 lbs.
32"	= 2,313 lbs.
48"	= 3,469 lbs.
64"	= 4,625 lbs.

48"Ø FLAT TOP WEIGHTS

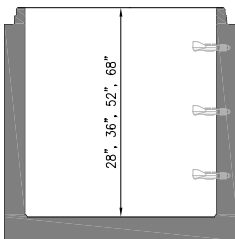
27"Ø HOLE

8" THICK	= 1596 lbs.
9" THICK	= 1775 lbs.
12" THICK	= 2314 lbs.

24"Ø HOLE

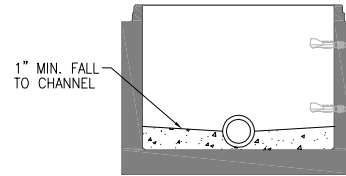
8" THICK	= 1679 lbs.
9" THICK	= 1869 lbs.
12" THICK	= 2439 lbs.

MONOLITHIC CONE



BASE WEIGHTS

28"	= 3,264 lbs.
36"	= 3,842 lbs.
52"	= 4,998 lbs.
68"	= 6,154 lbs.

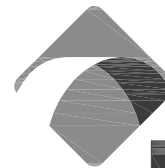


PREFORMED INVERT DETAIL

*** CUSTOM PRODUCT SIZES ARE AVAILABLE UPON REQUEST.
PLEASE CALL (865) 458-3998 FOR A TECHNICAL SERVICE REPRESENTATIVE.

GENERAL NOTES:

1. ALL MATERIAL, DESIGN, MANUFACTURE, PHYSICAL TEST REQUIREMENTS, FINISH MARKING, INSPECTION, REJECTION AND REPAIRS TO MEET "SPECIFICATIONS FOR PRECAST - REINFORCED CONCRETE MANHOLE SECTIONS". PER ASTM C-478 (LATEST VERSION)
2. CONCRETE STRENGTH: f'c @ 28 Days = 5,000 psi
3. VERTICAL MANHOLE STEPS SHALL BE CONSISTENTLY SPACED AND SHALL COMPLY WITH OSHA (SUBPART D) "FIXED LADDERS" (SECTION 1920-27_ AND /OR ASTM C-478



NPCA

CERTIFIED PLANT

VANHOSECO PRECAST, LLC

244 BLAIR BEND DRIVE
LOUDON, TN 37774
Tel: (865) 458-3998



**48" I.D. - PRECAST SEWER
MANHOLE PIECES**

SCALE: 1/4" = 1'-0"

S1

VANHOSECO