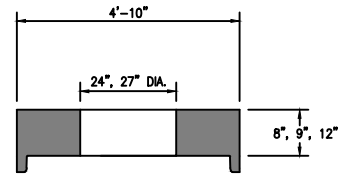
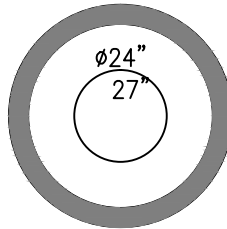
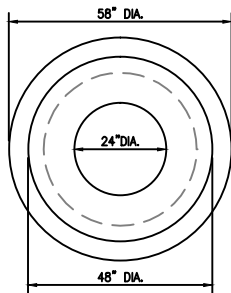
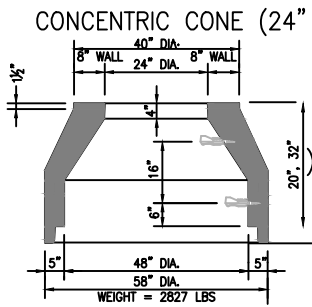


FLAT TOP OPENINGS



48"Ø FLAT TOP WEIGHTS

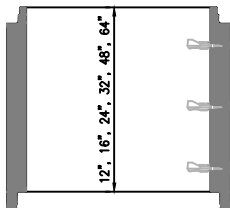
27"Ø HOLE

- 8" THICK = 1596 lbs.
- 9" THICK = 1775 lbs.
- 12" THICK = 2314 lbs.

24"Ø HOLE

- 8" THICK = 1679 lbs.
- 9" THICK = 1869 lbs.
- 12" THICK = 2439 lbs.

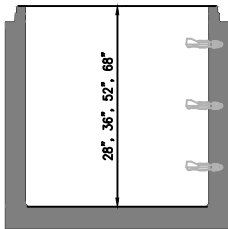
RISER



48"Ø RISER WEIGHTS

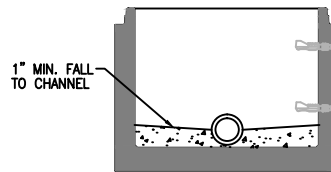
- 12" = 867 lbs.
- 16" = 1,156 lbs.
- 24" = 1,734 lbs.
- 32" = 2,313 lbs.
- 48" = 3,469 lbs.
- 64" = 4,625 lbs.

MONOLITHIC BASE



BASE WEIGHTS

- 28" = 3,264 lbs.
- 36" = 3,842 lbs.
- 52" = 4,998 lbs.
- 68" = 6,154 lbs.



PREFORMED INVERT DETAIL

\*\*\* CUSTOM PRODUCT SIZES ARE AVAILABLE UPON REQUEST. PLEASE CALL (865) 458-3998 FOR A TECHNICAL SERVICE REPRESENTATIVE.

GENERAL NOTES:

1. ALL MATERIAL, DESIGN, MANUFACTURE, PHYSICAL TEST REQUIREMENTS, FINISH MARKING, INSPECTION, REJECTION AND REPAIRS TO MEET "SPECIFICATIONS FOR PRECAST - REINFORCED CONCRETE MANHOLE SECTIONS". PER ASTM C-478 (LATEST VERSION)
2. CONCRETE STRENGTH:  $f'c$  @ 28 Days = 5,000 psi
3. VERTICAL MANHOLE STEPS SHALL BE CONSISTENTLY SPACED AND SHALL COMPLY WITH OSHA (SUBPART D) "FIXED LADDERS" (SECTION 1920-27\_ AND /OR ASTM C-478



**NPCA**

CERTIFIED PLANT

**VANHOSECO PRECAST, LLC**

244 BLAIR BEND DRIVE  
LOUDON, TN 37774  
Tel: (865) 458-3998



48" I.D. - PRECAST SEWER  
MANHOLE PIECES

SCALE: 1/4" = 1'-0"

S2