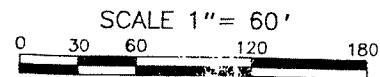


# WOODS OF COUNTRY CREEK

A PART OF THE NE. & SE. 1/4 OF SEC. 30, T-4-N, R-11-E,  
OAKLAND TOWNSHIP, OAKLAND COUNTY, MICHIGAN



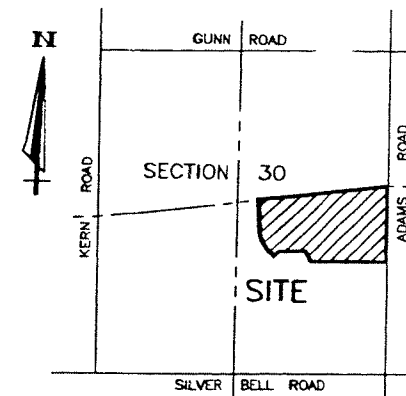
CURVE DATA

CURVE	ARC	RADIUS	CENTRAL ANGLE	CHORD	CHORD BEARING
3	36.07'	47.00'	43° 58' 35"	35.20'	N 23° 20' 38" W
4	280.60'	60.00'	267° 57' 10"	86.36'	N 88° 38' 40" E
5	36.07'	47.00'	43° 58' 35"	35.20'	N 20° 37' 57" E
6	129.65'	270.00'	27° 30' 46"	128.41'	N 74° 53' 17" E

EXAMINED AND APPROVED  
Date Dec. 1, 1995  
BY THE DEPARTMENT  
OF COMMERCE  
By Maynard R. Dyer, P.S.  
Manager  
Subdivision Control Unit

95-242929

LIBER 242 PAGE 1  
SHEET 1 OF 8 SHEETS

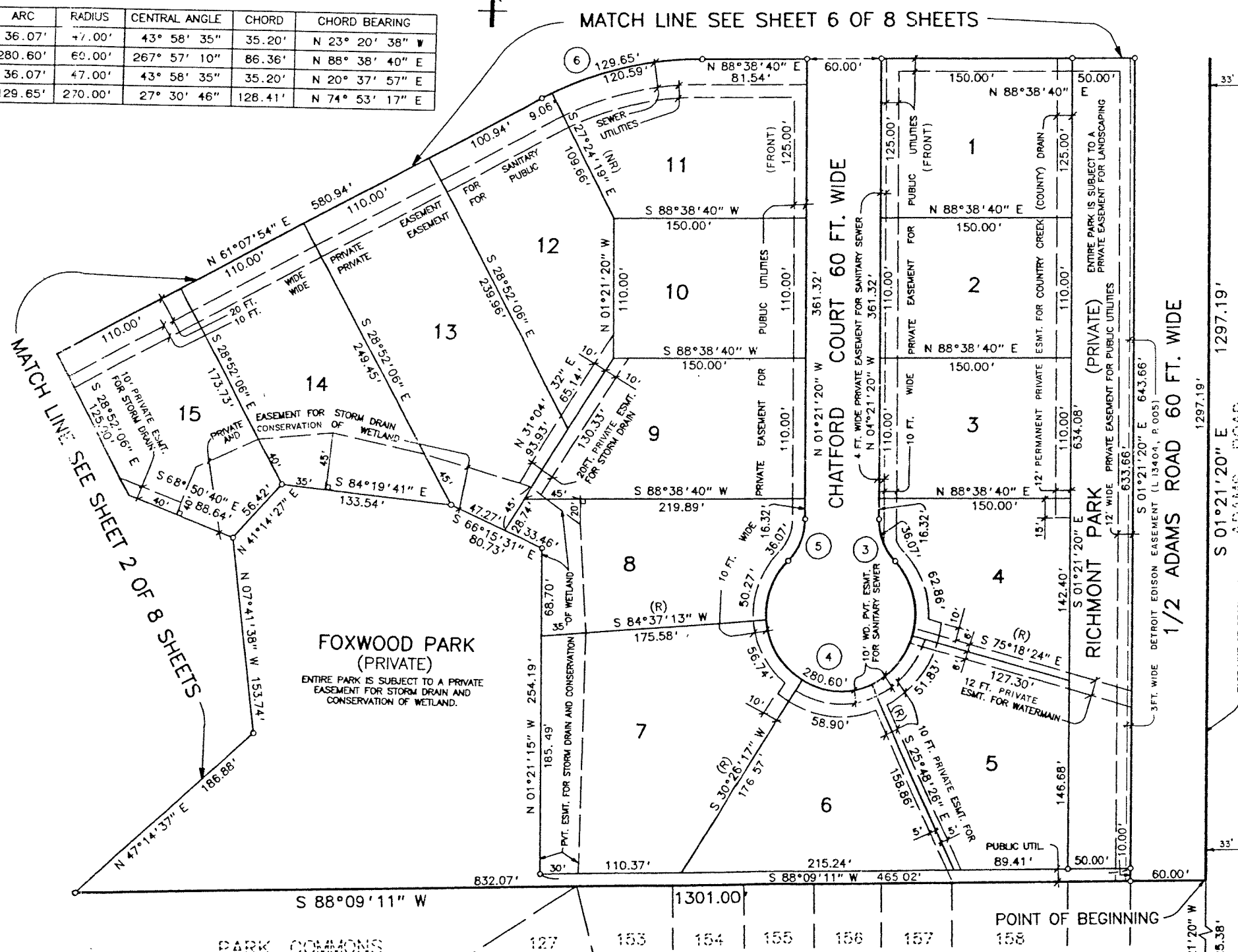


LOCATION MAP

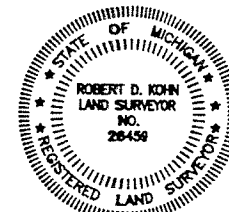
SCALE 1" = 2000'

**LEGEND**

1. ALL DIMENSIONS ARE GIVEN IN FEET.
2. CURVILINEAR MEASUREMENTS ARE ARC DISTANCES.
3. CONCRETE MONUMENTS HAVE BEEN PLACED AT ALL POINTS MARKED "C".
4. CONCRETE MONUMENTS ARE STEEL BARS ONE-HALF (1/2) INCH IN DIAMETER AND THIRTY SIX (36) INCHES IN LENGTH, ENCASED IN A CONCRETE CYLINDER FOUR (4) INCHES IN DIAMETER, AND THIRTY SIX (36) INCHES IN LENGTH.
5. LOT CORNERS HAVE BEEN MARKED WITH STEEL BARS ONE-HALF (1/2) INCH IN DIAMETER, AND EIGHTEEN (18) INCHES IN LENGTH.
6. (R) = RADIAL LINE, (NR) = NON RADIAL LINE.
7. B INDICATES A RIGHT ANGLE.
9. THE BEARINGS FOR THIS SUBDIVISION ARE BASED UPON AN OBSERVATION OF POLARIS DATED DECEMBER 8, 1988.
10. USE OF THE WORD "PRIVATE" DOES NOT LIMIT IN ANY WAY THE SCOPE OF THE EASEMENT GRANTED TO THE NAME COUNTY DRAINAGE DISTRICT.



UNPLATTED



*Robert D. Kohn*

**Giffels-Webster Engineers Inc.**  
ENGINEERS - SURVEYORS - PLANNERS  
2871 BOND STREET ROCHESTER HILLS MICHIGAN  
(810) 852-3100

RESTRICTIONS RECORDED 12/6/95 L. 15846 P. 601-604 INCL. O.C.R.

THE VILLAGE OF COUNTRY CREEK  
OAKLAND COUNTY CONDOMINIUM PLAN NO. 838

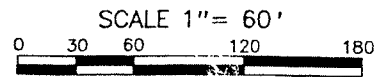
POINT OF BEGINNING

SOUTHEAST CORNER  
OF SECTION 30  
T-4-N, R-11-E  
L.C.R.C. L13476, P.874

# WOODS OF COUNTRY CREEK

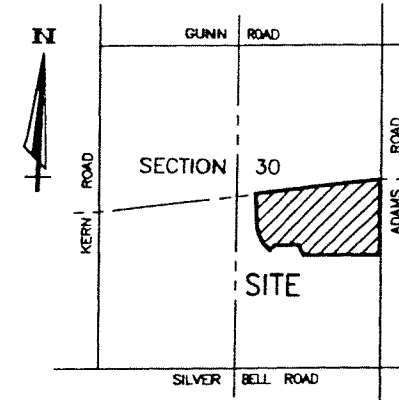
A PART OF THE NE. & SE. 1/4 OF SEC. 30, T-4-N, R-11-E,  
OAKLAND TOWNSHIP, OAKLAND COUNTY, MICHIGAN

LIBER 242 PAGE 14  
SHEET 2 OF 8 SHEETS



CURVE DATA

CURVE	ARC	RADIUS	CENTRAL ANGLE	CHORD	CHORD BEARING
14	36.07'	47.00'	43° 58' 35"	35.20'	N 50° 51' 24" W
15	280.60'	60.00'	267° 57' 10"	86.36'	N 61° 07' 54" E
16	36.07'	47.00'	43° 58' 35"	35.20'	N 06° 52' 49" W
17	405.66'	280.00'	83° 00' 31"	371.10'	N 77° 21' 51" W
18	318.73'	220.00'	83° 00' 31"	291.58'	N 77° 21' 51" W

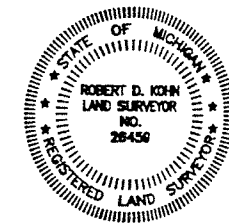
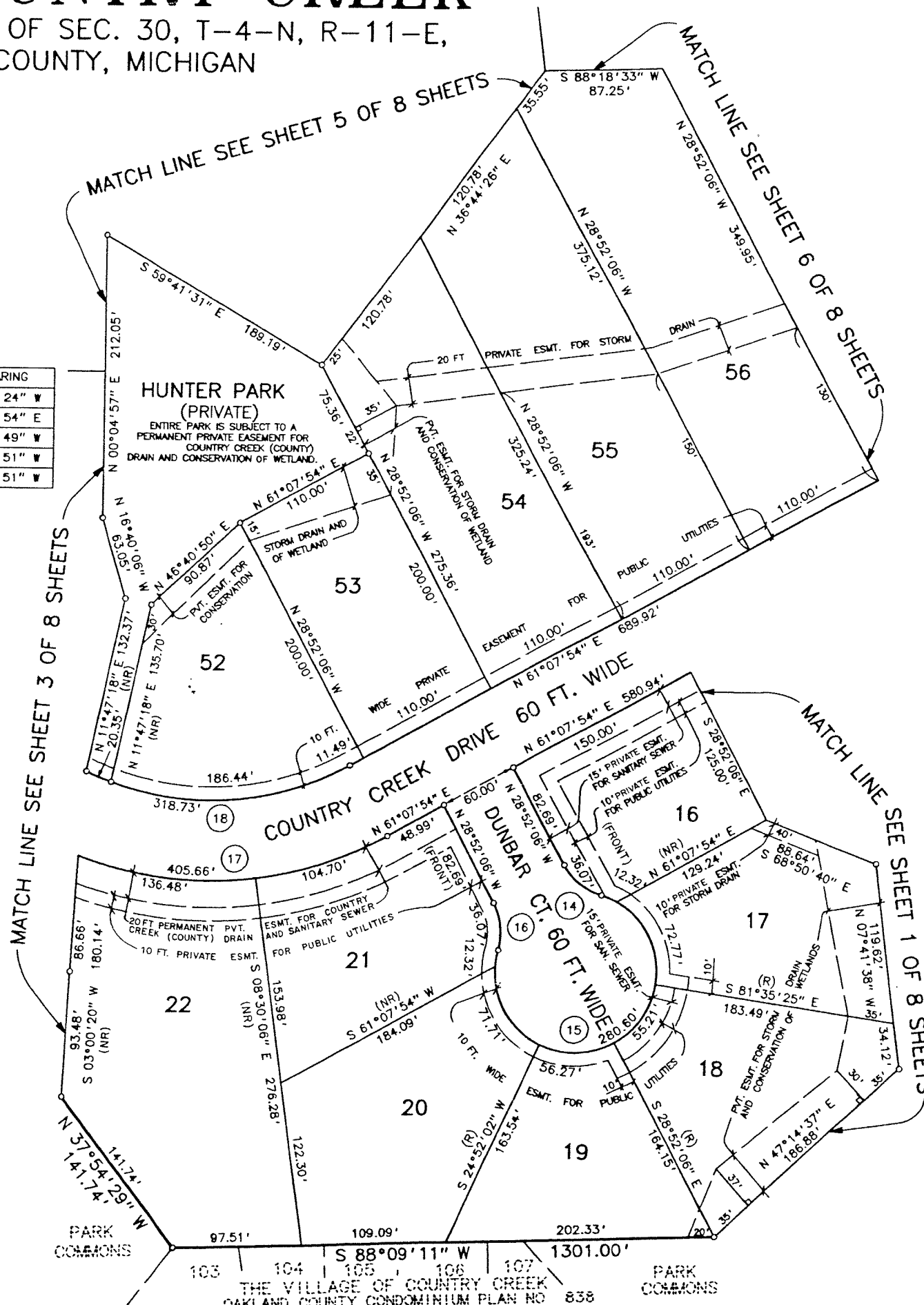


LOCATION MAP

SCALE 1" = 2000'

### LEGEND

1. ALL DIMENSIONS ARE GIVEN IN FEET.
2. CURVILINEAR MEASUREMENTS ARE ARC DISTANCES.
3. CONCRETE MONUMENTS HAVE BEEN PLACED AT ALL POINTS MARKED "O".
4. CONCRETE MONUMENTS ARE STEEL BARS ONE-HALF (1/2) INCH IN DIAMETER AND THIRTY SIX (36) INCHES IN LENGTH, ENCASED IN A CONCRETE CYLINDER FOUR (4) INCHES IN DIAMETER, AND THIRTY SIX (36) INCHES IN LENGTH.
5. LOT CORNERS HAVE BEEN MARKED WITH STEEL BARS ONE-HALF (1/2) INCH IN DIAMETER, AND EIGHTEEN (18) INCHES IN LENGTH.
6. (R) = RADIAL LINE, (NR) = NON RADIAL LINE.
7. ⊥ INDICATES A RIGHT ANGLE.
9. THE BEARINGS FOR THIS SUBDIVISION ARE BASED UPON AN OBSERVATION OF POLARIS DATED DECEMBER 8, 1988.
10. USE OF THE WORD "PRIVATE" DOES NOT LIMIT IN ANY WAY THE SCOPE OF THE EASEMENT GRANTED TO THE NAME COUNTY DRAINAGE DISTRICT.



*Robert D. Kohn*

**Giffels-Webster Engineers Inc.**  
ENGINEERS - SURVEYORS - PLANNERS  
2871 BOND STREET ROCHESTER HILLS MICHIGAN  
(810) 852-3100

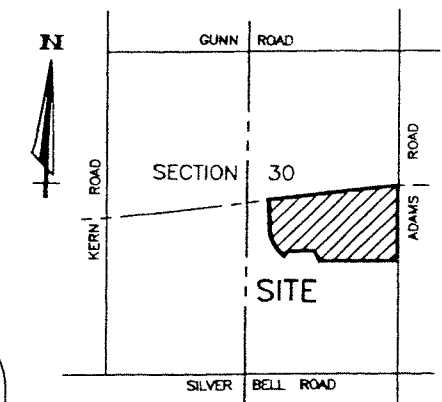
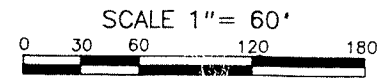
RESTRICTIONS RECORDED 12/1/95 L-15866 P. 601-609 INCL O.C.R.

103 104 105 106 107  
THE VILLAGE OF COUNTRY CREEK  
OAKLAND COUNTY CONDOMINIUM PLAN NO 838  
PARK COMMONS

# WOODS OF COUNTRY CREEK

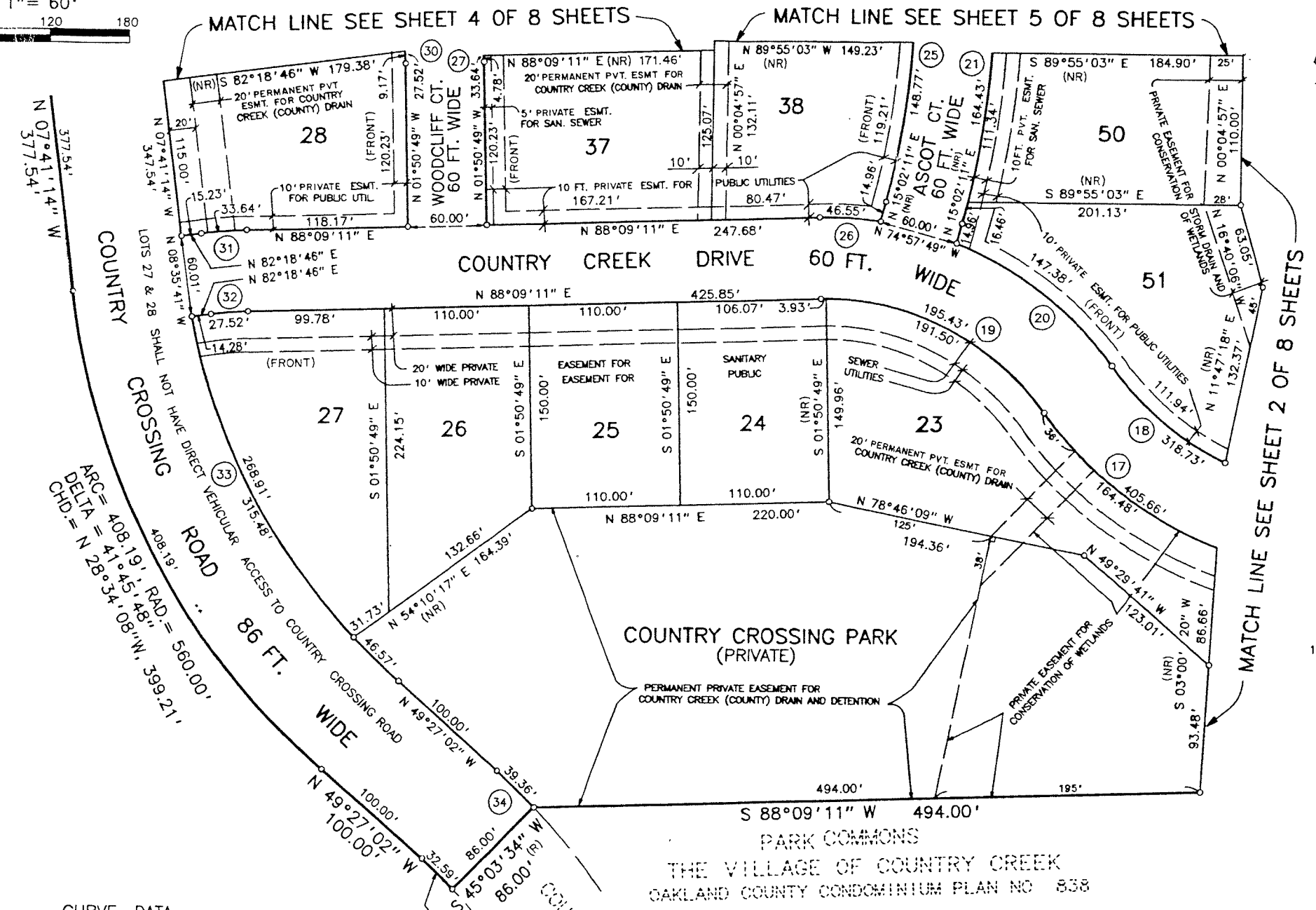
A PART OF THE NE. & SE. 1/4 OF SEC. 30, T-4-N, R-11-E,  
OAKLAND TOWNSHIP, OAKLAND COUNTY, MICHIGAN

LIBER 242 PAGE 1  
SHEET 3 OF 8 SHEETS



LOCATION MAP  
SCALE 1" = 2000'

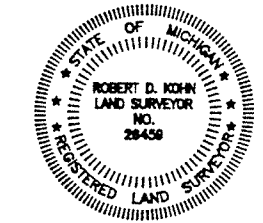
- LEGEND**
1. ALL DIMENSIONS ARE GIVEN IN FEET.
  2. CURVILINEAR MEASUREMENTS ARE ARC DISTANCES.
  3. CONCRETE MONUMENTS HAVE BEEN PLACED AT ALL POINTS MARKED "O".
  4. CONCRETE MONUMENTS ARE STEEL BARS ONE-HALF (1/2) INCH IN DIAMETER AND THIRTY SIX (36) INCHES IN LENGTH, ENCASED IN A CONCRETE CYLINDER FOUR (4) INCHES IN DIAMETER, AND THIRTY SIX (36) INCHES IN LENGTH.
  5. LOT CORNERS HAVE BEEN MARKED WITH STEEL BARS ONE-HALF (1/2) INCH IN DIAMETER, AND EIGHTEEN (18) INCHES IN LENGTH.
  6. (R)= RADIAL LINE, (NR)=NON RADIAL LINE.
  7. L INDICATES A RIGHT ANGLE.
  9. THE BEARINGS FOR THIS SUBDIVISION ARE BASED UPON AN OBSERVATION OF POLARIS DATED DECEMBER 8, 1988.
  10. USE OF THE WORD "PRIVATE" DOES NOT LIMIT IN ANY WAY THE SCOPE OF THE EASEMENT GRANTED TO THE NAME COUNTY DRAINAGE DISTRICT.



CURVE DATA

CURVE	ARC	RADIUS	CENTRAL ANGLE	CHORD	CHORD BEARING
17	405.66'	280.00'	83° 00' 31"	371.10'	N 77° 21' 51" W
18	318.73'	220.00'	83° 00' 31"	291.58'	N 77° 21' 51" W
19	195.43'	200.00'	55° 59' 14"	187.75'	N 63° 51' 12" W
20	147.38'	260.00'	32° 28' 41"	145.42'	N 52° 05' 55" W
21	164.43'	630.00'	14° 57' 14"	163.96'	N 07° 33' 34" E
25	148.77'	570.00'	14° 57' 14"	148.34'	N 07° 33' 34" E
26	46.55'	260.00'	10° 15' 27"	46.48'	N 86° 43' 05" W
27	33.64'	330.00'	05° 50' 25"	33.62'	N 04° 46' 01" W
30	27.52'	270.00'	05° 50' 25"	27.51'	N 04° 46' 01" W
31	33.64'	330.00'	05° 50' 25"	33.62'	N 85° 13' 59" E
32	27.52'	270.00'	05° 50' 25"	27.51'	N 85° 13' 59" E
33	315.48'	474.00'	38° 08' 04"	309.89'	N 30° 23' 00" W
34	39.36'	500.00'	04° 30' 36"	39.35'	N 47° 11' 44" W

ARC = 32.59', RAD = 414.00'  
DELTA = 04° 30' 36" W  
CHD = N 47° 11' 44" W, 32.58'



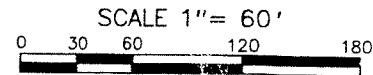
*Robert D. Kohn*  
**Giffels-Webster Engineers Inc.**  
ENGINEERS - SURVEYORS - PLANNERS  
2271 BOND STREET ROCHESTER HILLS MICHIGAN  
(810) 862-3100

RESTRICTIONS RECORDED 12/6/85 L-15866 P. 601-609 INCL O.C.R.

# WOODS OF COUNTRY CREEK

A PART OF THE NE. & SE. 1/4 OF SEC. 30, T-4-N, R-11-E,  
OAKLAND TOWNSHIP, OAKLAND COUNTY, MICHIGAN

LIBER 242 PAGE 16  
SHEET 4 OF 8 SHEETS

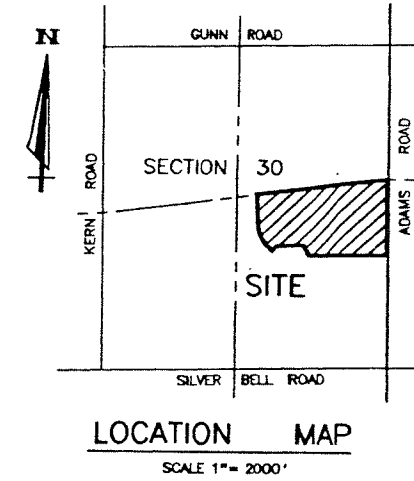
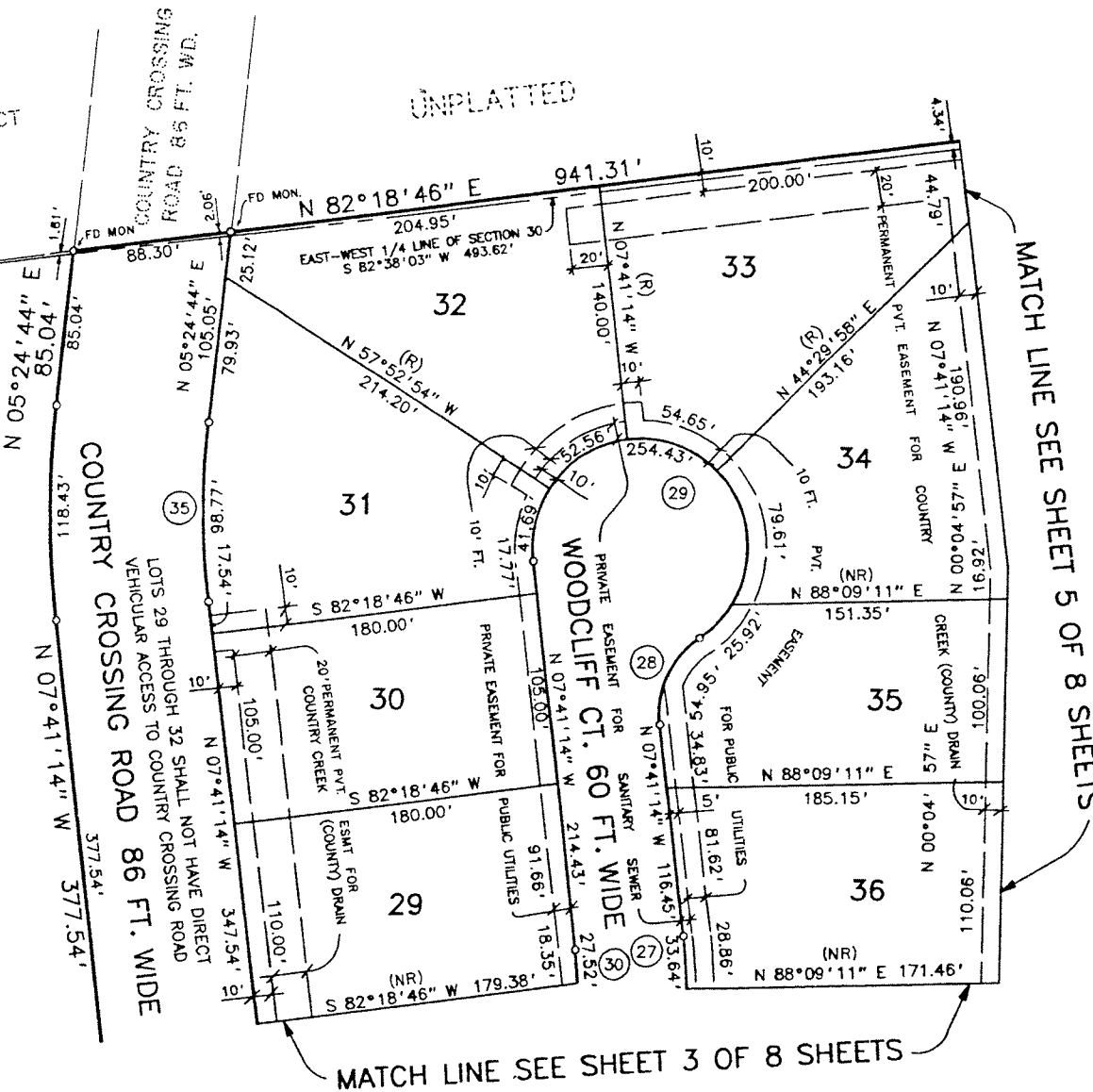


THE CROSSINGS SUB. NO. 5  
L. 239, P. 27-32  
CROSSINGS PARK WEST

CENTER OF SEC. 30  
T-4-N, R-11-E  
L.C.R.C. L14394, P.597

ARC = 118.43', RAD. = 518.00'  
DELTA = 13°05'58"  
CHD. = N 01°08'15"W, 118.17'

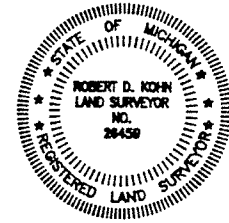
UNPLATTED



- LEGEND**
1. ALL DIMENSIONS ARE GIVEN IN FEET.
  2. CURVILINEAR MEASUREMENTS ARE ARC DISTANCES.
  3. CONCRETE MONUMENTS HAVE BEEN PLACED AT ALL POINTS MARKED "σ".
  4. CONCRETE MONUMENTS ARE STEEL BARS ONE-HALF (1/2) INCH IN DIAMETER AND THIRTY SIX (36) INCHES IN LENGTH, ENCASED IN A CONCRETE CYLINDER FOUR (4) INCHES IN DIAMETER, AND THIRTY SIX (36) INCHES IN LENGTH.
  5. LOT CORNERS HAVE BEEN MARKED WITH STEEL BARS ONE-HALF (1/2) INCH IN DIAMETER, AND EIGHTEEN (18) INCHES IN LENGTH.
  6. (R) = RADIAL LINE, (NR) = NON RADIAL LINE.
  7. ⊥ INDICATES A RIGHT ANGLE.
  9. THE BEARINGS FOR THIS SUBDIVISION ARE BASED UPON AN OBSERVATION OF POLARIS DATED DECEMBER 8, 1988.
  10. USE OF THE WORD "PRIVATE" DOES NOT LIMIT IN ANY WAY THE SCOPE OF THE EASEMENT GRANTED TO THE NAME COUNTY DRAINAGE DISTRICT.

CURVE DATA

CURVE	ARC	RADIUS	CENTRAL ANGLE	CHORD	CHORD BEARING
27	33.64'	330.00'	05° 50' 25"	33.62'	N 04° 46' 01" W
28	54.95'	50.00'	62° 57' 52"	52.22'	N 23° 47' 42" E
29	254.43'	60.00'	242° 57' 52"	102.34'	N 86° 12' 18" W
30	27.52'	270.00'	05° 50' 25"	27.51'	N 04° 46' 01" W
35	98.77'	432.00'	13° 05' 58"	98.55'	N 01° 08' 15" W



*Robert D. Kohn*

**Giffels-Webster Engineers Inc.**  
ENGINEERS - SURVEYORS - PLANNERS  
2871 BOND STREET ROCHESTER HILLS MICHIGAN  
(810) 852-3100

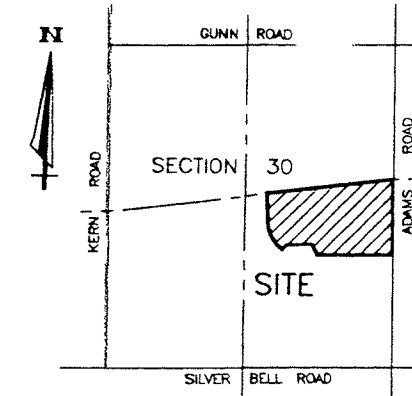
RESTRICTIONS RECORDED 12/6/95 IN L. 15866 P. 601-609 INCL O.C.R.

# WOODS OF COUNTRY CREEK

A PART OF THE NE. & SE. 1/4 OF SEC. 30, T-4-N, R-11-E,  
OAKLAND TOWNSHIP, OAKLAND COUNTY, MICHIGAN

LIBER 242 PAGE  
SHEET 5 OF 8 SHEETS

SCALE 1" = 60'

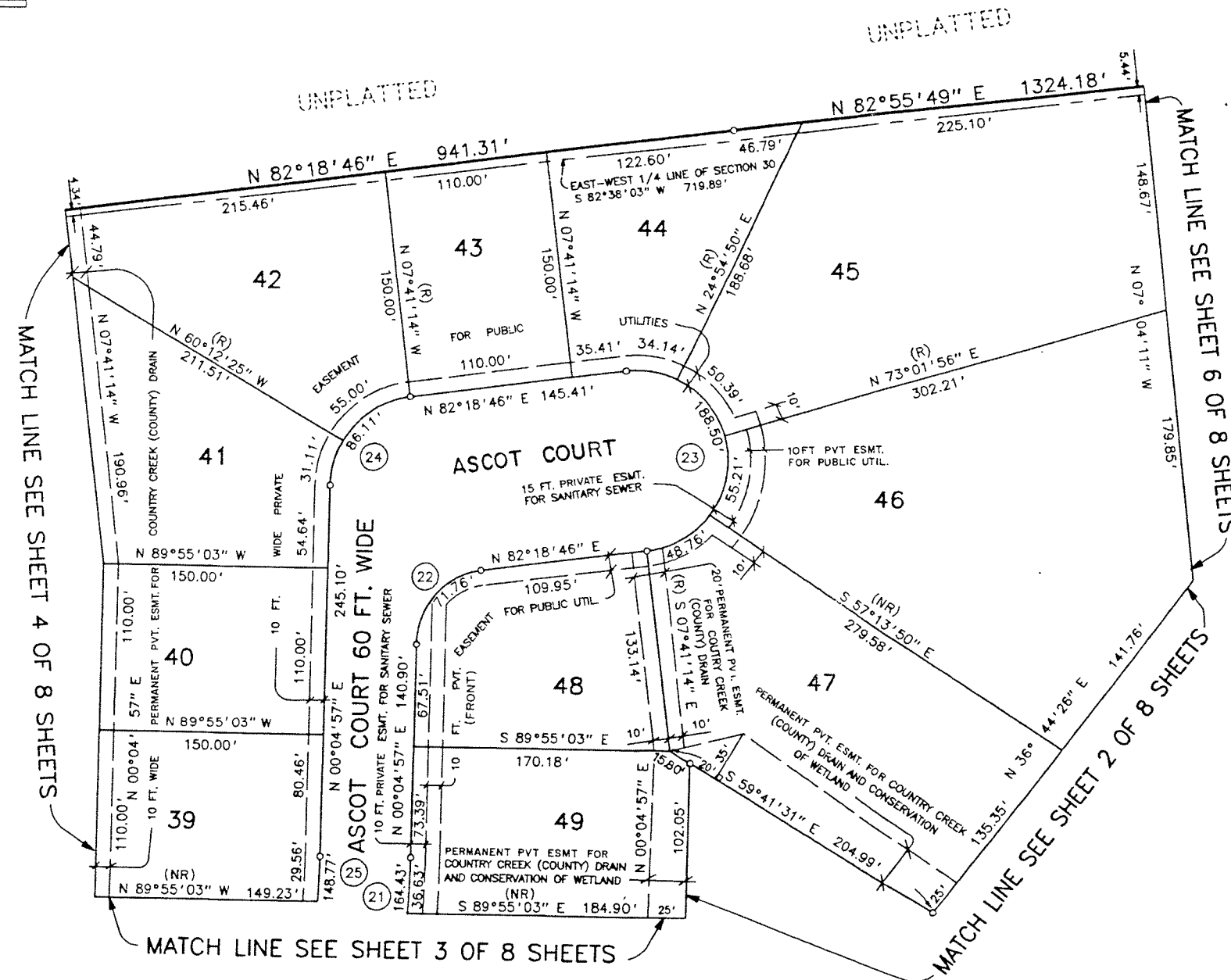


LOCATION MAP

SCALE 1" = 2000'

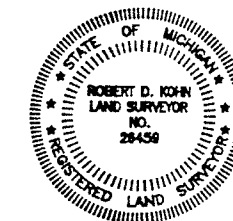
### LEGEND

1. ALL DIMENSIONS ARE GIVEN IN FEET.
2. CURVILINEAR MEASUREMENTS ARE ARC DISTANCES.
3. CONCRETE MONUMENTS HAVE BEEN PLACED AT ALL POINTS MARKED "O".
4. CONCRETE MONUMENTS ARE STEEL BARS ONE-HALF (1/2) INCH IN DIAMETER AND THIRTY SIX (36) INCHES IN LENGTH, ENCASED IN A CONCRETE CYLINDER FOUR (4) INCHES IN DIAMETER, AND THIRTY SIX (36) INCHES IN LENGTH.
5. LOT CORNERS HAVE BEEN MARKED WITH STEEL BARS ONE-HALF (1/2) INCH IN DIAMETER, AND EIGHTEEN (18) INCHES IN LENGTH.
6. (R)= RADIAL LINE, (NR)=NON RADIAL LINE.
7.  $\perp$  INDICATES A RIGHT ANGLE.
9. THE BEARINGS FOR THIS SUBDIVISION ARE BASED UPON AN OBSERVATION OF POLARIS DATED DECEMBER 8, 1988.
10. USE OF THE WORD "PRIVATE" DOES NOT LIMIT IN ANY WAY THE SCOPE OF THE EASEMENT GRANTED TO THE NAME COUNTY DRAINAGE DISTRICT.



CURVE DATA

CURVE	ARC	RADIUS	CENTRAL ANGLE	CHORD	CHORD BEARING
21	164.43'	630.00'	14° 57' 14"	163.96'	N 07° 33' 34" E
22	71.76'	50.00'	82° 13' 49"	65.76'	N 41° 11' 51" E
23	188.50'	60.00'	180° 00' 00"	120.00'	N 07° 41' 14" W
24	86.11'	60.00'	82° 13' 49"	78.91'	N 41° 11' 51" E
25	148.77'	570.00'	14° 57' 14"	148.34'	N 07° 33' 34" E



*Robert D. Kohn*

**Giffels-Webster Engineers Inc.**

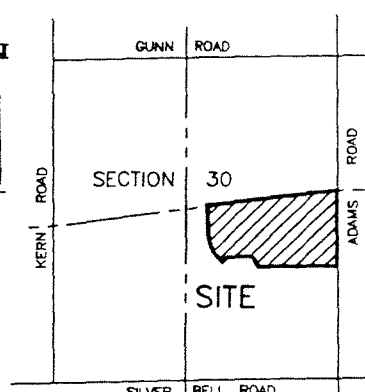
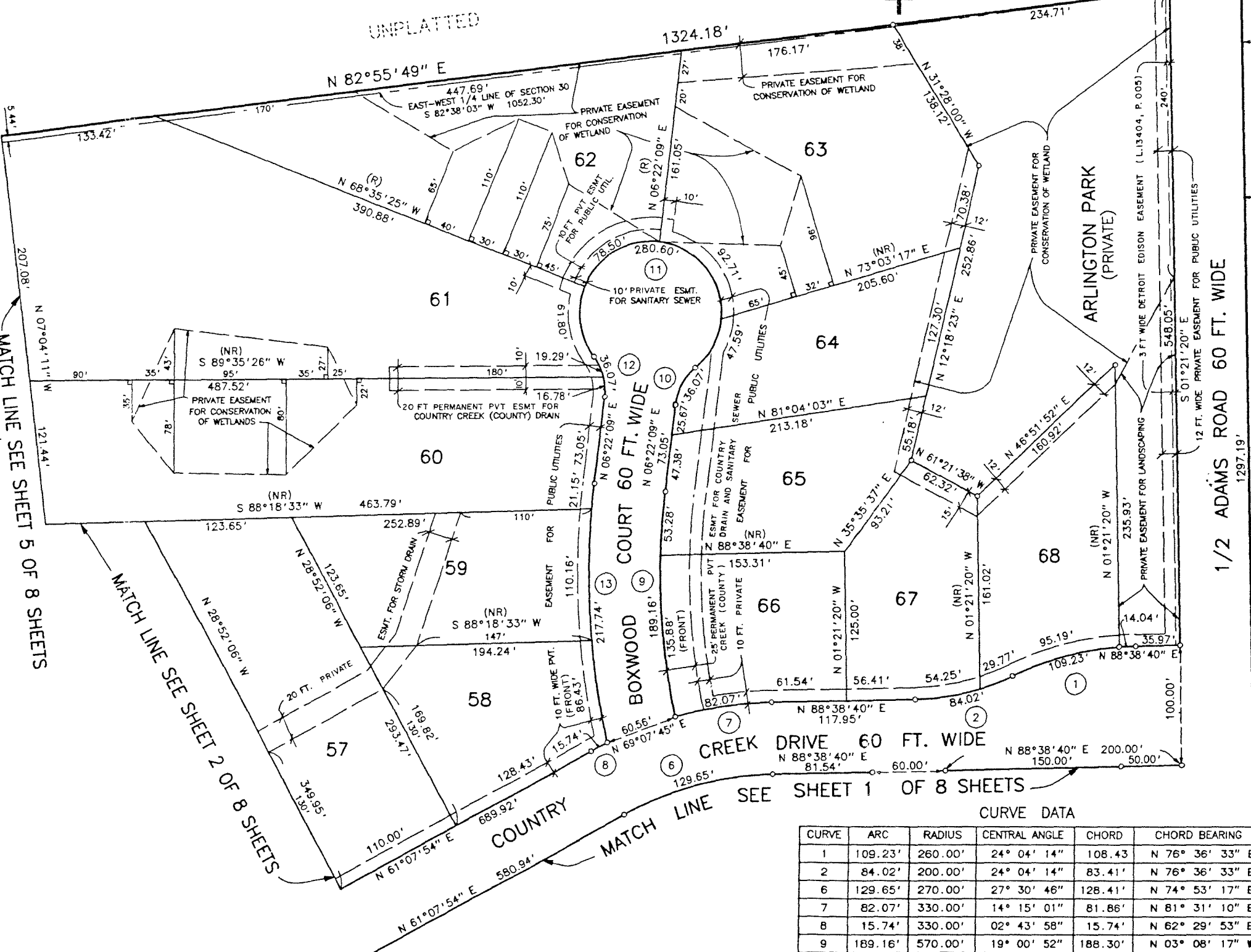
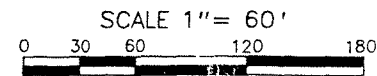
ENGINEERS - SURVEYORS - PLANNERS  
2871 BOND STREET ROCHESTER HILLS MICHIGAN  
(810) 852-3100

RESTRICTIONS RECORDED 12/16/85 IN L-15866 P. 604-609 INCL D.C.R.

# WOODS OF COUNTRY CREEK

A PART OF THE NE. & SE. 1/4 OF SEC. 30, T-4-N, R-11-E,  
OAKLAND TOWNSHIP, OAKLAND COUNTY, MICHIGAN

LIBER 242 PAGE 18  
SHEET 6 OF 8 SHEETS



LOCATION MAP  
SCALE 1"= 2000'

### LEGEND

1. ALL DIMENSIONS ARE GIVEN IN FEET.
2. CURVILINEAR MEASUREMENTS ARE ARC DISTANCES.
3. CONCRETE MONUMENTS HAVE BEEN PLACED AT ALL POINTS MARKED "C".
4. CONCRETE MONUMENTS ARE STEEL BARS ONE-HALF (1/2) INCH IN DIAMETER AND THIRTY SIX (36) INCHES IN LENGTH, ENCASED IN A CONCRETE CYLINDER FOUR (4) INCHES IN DIAMETER, AND THIRTY SIX (36) INCHES IN LENGTH.
5. LOT CORNERS HAVE BEEN MARKED WITH STEEL BARS ONE-HALF (1/2) INCH IN DIAMETER, AND EIGHTEEN (18) INCHES IN LENGTH.
6. (R)=RADIAL LINE, (NR)=NON RADIAL LINE.
7. ∠ INDICATES A RIGHT ANGLE.
8. THE BEARINGS FOR THIS SUBDIVISION ARE BASED UPON AN OBSERVATION OF POLARIS DATED DECEMBER 8, 1988.
9. USE OF THE WORD "PRIVATE" DOES NOT LIMIT IN ANY WAY THE SCOPE OF THE EASEMENT GRANTED TO THE NAME COUNTY DRAINAGE DISTRICT.

MATCH LINE SEE SHEET 5 OF 8 SHEETS

MATCH LINE SEE SHEET 2 OF 8 SHEETS

MATCH LINE SEE SHEET 1 OF 8 SHEETS

### CURVE DATA

CURVE	ARC	RADIUS	CENTRAL ANGLE	CHORD	CHORD BEARING
1	109.23'	260.00'	24° 04' 14"	108.43'	N 76° 36' 33" E
2	84.02'	200.00'	24° 04' 14"	83.41'	N 76° 36' 33" E
6	129.65'	270.00'	27° 30' 46"	128.41'	N 74° 53' 17" E
7	82.07'	330.00'	14° 15' 01"	81.86'	N 81° 31' 10" E
8	15.74'	330.00'	02° 43' 58"	15.74'	N 62° 29' 53" E
9	189.16'	570.00'	19° 00' 52"	188.30'	N 03° 08' 17" W
10	36.07'	47.00'	43° 58' 35"	35.20'	N 28° 21' 26" E
11	280.60'	60.00'	267° 57' 10"	86.36'	N 83° 37' 51" W
12	36.07'	47.00'	43° 58' 35"	35.20'	N 15° 37' 09" W
13	217.74'	630.00'	19° 48' 09"	216.86'	N 03° 31' 56" W



*Robert D. Kohn*

**Giffels-Webster Engineers Inc.**  
ENGINEERS - SURVEYORS - PLANNERS  
2871 BOND STREET ROCHESTER HILLS MICHIGAN  
(810) 852-3100

RESTRICTIONS RECORDED 12/16/95 IN L 15866 P. 601-609 INCL. O.C.R.

# WOODS OF COUNTRY CREEK

A PART OF THE NE. & SE. 1/4 OF SEC. 30, T-4-N, R-11-E,  
OAKLAND TOWNSHIP, OAKLAND COUNTY, MICHIGAN

LIBER 242 PAGE 1  
SHEET 7 OF 8 SHEETS

### SURVEYOR'S CERTIFICATE

I, ROBERT D. KOHN, SURVEYOR, CERTIFY: THAT I HAVE SURVEYED, DIVIDED AND MAPPED THE LAND SHOWN ON THIS PLAT DESCRIBED AS FOLLOWS: "WOODS OF COUNTRY CREEK" A PART OF THE NORTHEAST AND SOUTHEAST 1/4 OF SECTION 30, T-4-N, R-11-E, OAKLAND TOWNSHIP, OAKLAND COUNTY, MICHIGAN; BEING MORE PARTICULARLY DESCRIBED AS: COMMENCING AT THE SOUTHEAST CORNER OF SECTION 30; THENCE N. 01° 21' 20" W., 1925.38 FEET ALONG THE EAST LINE OF SAID SECTION 30 (ADAMS ROAD) TO THE POINT OF BEGINNING; THENCE THE FOLLOWING FOUR COURSES ALONG THE NORTHERLY LINE OF "THE VILLAGE OF COUNTRY CREEK", OAKLAND COUNTY CONDOMINIUM PLAN NO. 838; (1) S. 88° 09' 11" W., 1301.00 FEET, AND (2) N. 37° 54' 29" W., 141.74 FEET, AND (3) S. 88° 09' 11" W., 494.00 FEET, AND (4) S. 45° 03' 34" W., 86.00 FEET; THENCE ALONG A NON-TANGENT CURVE TO THE LEFT 32.59 FEET, SAID CURVE HAVING A RADIUS OF 414.00 FEET, CENTRAL ANGLE OF 04° 30' 36" AND LONG CHORD BEARING OF N. 47° 11' 44" W., 32.58 FEET; THENCE N. 49° 27' 02" W., 100.00 FEET; THENCE ALONG A CURVE TO THE RIGHT 408.19 FEET, SAID CURVE HAVING A RADIUS OF 560.00 FEET, CENTRAL ANGLE OF 41° 45' 48" AND LONG CHORD BEARING OF N. 28° 34' 08" W., 399.21 FEET; THENCE N. 07° 41' 14" W., 377.54 FEET; THENCE ALONG A CURVE TO THE RIGHT 118.43 FEET., SAID CURVE HAVING A RADIUS OF 518.00 FEET, CENTRAL ANGLE OF 13° 05' 58" AND LONG CHORD BEARING OF N. 01° 08' 15" W., 118.17 FEET; THENCE N. 05° 24' 44" E., 85.04 FEET; THENCE N. 82° 18' 46" E., 941.31 FEET, THENCE N. 82° 55' 49" E., 1324.18 FEET TO THE EAST 1/4 CORNER OF SAID SECTION 30; THENCE S. 01° 21' 20" E., 1297.19 FEET ALONG THE EAST LINE OF SECTION 30 (ADAMS ROAD) TO THE POINT OF BEGINNING AND CONTAINING 58.36 ACRES AND COMPRISING OF 68 LOTS NUMBERED 1 THROUGH 68 INCLUSIVE, AND FIVE PRIVATE PARKS.

THAT I HAVE MADE SUCH SURVEY, LAND DIVISION AND PLAT BY THE DIRECTION OF THE OWNERS OF SUCH LAND.

THAT SUCH PLAT IS A CORRECT REPRESENTATION OF ALL THE EXTERIOR BOUNDARIES OF THE LAND SURVEYED AND THE SUBDIVISION OF IT.

THAT THE REQUIRED MONUMENTS AND LOT MARKERS HAVE BEEN LOCATED IN THE GROUND OR THAT SURETY HAS BEEN DEPOSITED WITH THE MUNICIPALITY, AS REQUIRED BY SECTION 125 OF THE ACT.

THAT THE ACCURACY OF SURVEY IS WITHIN THE LIMITS REQUIRED BY SECTION 126 OF THE ACT.

THAT THE BEARING SHOWN ON THE PLAT ARE EXPRESSED AS REQUIRED BY SECTION 126 (3) OF THE ACT AND EXPLAINED IN THE LEGEND.

GIFFELS-WEBSTER ENGINEERS, INC.  
2871 BOND STREET  
ROCHESTER HILLS, MICHIGAN 48309-3515

DATE MARCH 1, 1995

*Robert D. Kohn*  
ROBERT D. KOHN, R.L.S. #26459  
VICE PRESIDENT



### PROPRIETOR'S CERTIFICATE

EAGLE CREEK MASTER LIMITED PARTNERSHIP DULY ORGANIZED AND EXISTING UNDER THE LAWS OF THE STATE OF MICHIGAN, BY EAGLE CREEK DEVELOPMENT LIMITED PARTNERSHIP, GENERAL PARTNER AS PROPRIETOR HAS CAUSED THE LAND TO BE SURVEYED, DIVIDED, MAPPED AND DEDICATED AS REPRESENTED ON THIS PLAT AND THAT THE STREETS ARE FOR THE USE OF THE PUBLIC; THAT THE PUBLIC UTILITY EASEMENTS ARE PRIVATE EASEMENTS AND THAT ALL OTHER EASEMENTS ARE FOR THE USES SHOWN ON THE PLAT; THAT ARLINGTON PARK, COUNTRY CROSSING PARK, FOXWOOD PARK, HUNTER PARK AND RICHMONT PARK ARE PRIVATE PARKS FOR THE USE OF THE LOT OWNERS OF THIS SUBDIVISION AND OTHER SUBDIVISIONS WHERE TITLE IS TRACEABLE TO THIS PROPRIETOR; AND THAT LOTS 27 THROUGH 32 SHALL NOT HAVE DIRECT VEHICULAR ACCESS TO COUNTRY CROSSING ROAD.

WITNESSES:

BY:

*Tina M. Mulholland*  
TINA M. MULHOLLAND

*Laurence R. Goss*  
LAURENCE R. GOSS  
VICE PRESIDENT

*Julie A. Murphy*  
Julie A. Murphy

B-K ADAMS SILVERBELL ASSOCIATES, INC.  
30100 TELEGRAPH ROAD, SUITE 366  
BINGHAM FARMS, MICHIGAN 48025  
GENERAL PARTNER OF:

SILVERBELL ADAMS ASSOCIATES  
LIMITED PARTNERSHIP  
30100 TELEGRAPH ROAD, SUITE 366  
BINGHAM FARMS, MICHIGAN 48025  
FILE L15-420 11-6-90  
GENERAL PARTNER OF:

EAGLE CREEK DEVELOPMENT  
LIMITED PARTNERSHIP  
30100 TELEGRAPH ROAD, SUITE 366  
BINGHAM FARMS, MICHIGAN 48025  
FILE L15-439 11-28-90  
GENERAL PARTNER OF:

EAGLE CREEK MASTER LIMITED PARTNERSHIP  
30100 TELEGRAPH ROAD, SUITE 366  
BINGHAM FARMS, MICHIGAN 48025  
FILE L15-473 12-7-90

### ACKNOWLEDGMENT:

STATE OF MICHIGAN)  
)S.S.  
COUNTY OF MACOMB)

PERSONALLY CAME BEFORE ME THIS 1st DAY OF March, 1995, LAURENCE R. GOSS, VICE PRESIDENT OF B-K ADAMS SILVERBELL ASSOCIATES, INC., GENERAL PARTNER OF SILVERBELL ADAMS ASSOCIATES LIMITED PARTNERSHIP, GENERAL PARTNER OF EAGLE CREEK DEVELOPMENT LIMITED PARTNERSHIP, GENERAL PARTNER OF EAGLE CREEK MASTER LIMITED PARTNERSHIP, TO ME KNOWN TO BE THE PERSON WHO EXECUTED THE FOREGOING INSTRUMENT, AND TO ME KNOWN TO BE SUCH PARTNER, AND ACKNOWLEDGED THAT HE EXECUTED THE FOREGOING INSTRUMENT AS SUCH PARTNER AS THE FREE ACT AND DEED OF SAID LIMITED PARTNERSHIP.

MY COMMISSION EXPIRES: 10-11-97

*Barbara Hollins*  
BARBARA HOLLINS  
NOTARY PUBLIC  
MACOMB COUNTY, MICHIGAN  
ACTING IN OAKLAND COUNTY,  
MICHIGAN

### PROPRIETOR'S CERTIFICATE:

FIRST OF AMERICA BANK, A NATIONAL BANKING ASSOCIATION, DULY ORGANIZED AND EXISTING UNDER THE LAWS OF THE STATE OF MICHIGAN BY MARIANNE VANWULFEN, VICE PRESIDENT, HAS CAUSED THE LAND EMBRACED IN THIS PLAT TO BE SURVEYED, DIVIDED, MAPPED AND DEDICATED AS REPRESENTED ON THIS PLAT AND THAT THE STREETS ARE FOR THE USE OF THE PUBLIC, THAT THE PUBLIC UTILITY EASEMENTS ARE PRIVATE EASEMENTS AND THAT ALL OTHER EASEMENTS ARE FOR THE USES SHOWN ON THE PLAT, THAT ARLINGTON PARK, COUNTRY CROSSING PARK, FOXWOOD PARK, HUNTER PARK AND RICHMONT PARK ARE PRIVATE PARKS FOR THE USE OF THE LOT OWNERS OF THIS SUBDIVISION AND OTHER SUBDIVISIONS WHERE TITLE IS TRACEABLE TO THIS PROPRIETOR, AND THAT LOTS 27 THROUGH 32 SHALL NOT HAVE DIRECT VEHICULAR ACCESS TO COUNTRY CROSSING ROAD.

WITNESSES:

FIRST OF AMERICA BANK, N.A.  
39209 WEST SIX MILE ROAD, SUITE 200  
LIVONIA, MICHIGAN 48154

*Jeffrey Leonard*  
JEFFREY LEONARD

*Ronald Greenleaf*  
RONALD GREENLEAF

BY: *Marianne VanWulfen*  
MARIANNE VANWULFEN, VICE PRESIDENT

### ACKNOWLEDGMENT:

STATE OF MICHIGAN)  
)S.S.  
COUNTY OF OAKLAND)

PERSONALLY CAME BEFORE ME THIS 15th DAY OF March, 1995, MARIANNE VANWULFEN, VICE PRESIDENT OF THE ABOVE NAMED BANK TO ME KNOWN TO BE THE PERSON WHO EXECUTED THE FOREGOING INSTRUMENT AND TO ME KNOWN TO BE SUCH VICE PRESIDENT OF SAID BANK, AND ACKNOWLEDGED THAT SHE EXECUTED THE FOREGOING INSTRUMENT AS SUCH OFFICER AS HER FREE ACT AND DEED OF SAID BANK BY ITS AUTHORITY.

MY COMMISSION EXPIRES: 10/11/97

*Barbara M. Hollins*  
BARBARA M. HOLLINS, NOTARY PUBLIC  
MACOMB COUNTY, MICHIGAN  
ACTING IN OAKLAND COUNTY, MICHIGAN

# WOODS OF COUNTRY CREEK

A PART OF THE NE. & SE. 1/4 OF SEC. 30, T-4-N, R-11-E,  
OAKLAND TOWNSHIP, OAKLAND COUNTY, MICHIGAN

LIBER 242 PAGE 20  
SHEET 8 OF 8 SHEETS

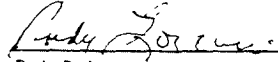
### COUNTY TREASURER'S CERTIFICATE:

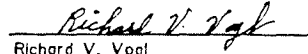
THE RECORDS IN MY OFFICE SHOW NO UNPAID TAXES OR SPECIAL ASSESSMENTS FOR THE FIVE YEARS PRECEDING MARCH 17, 1995 INVOLVING THE LANDS INCLUDED IN THIS PLAT.

  
C. HUGH DOHANY  
OAKLAND COUNTY TREASURER

### COUNTY ROAD COMMISSION CERTIFICATE:

APPROVED ON MAY 10, 1995 AS COMPLYING WITH SECTION 183, OF ACT 288, P.A. 1967, AND THE APPLICABLE PUBLISHED RULES AND REGULATIONS OF THE BOARD OF ROAD COMMISSIONERS OF THE COUNTY OF OAKLAND.

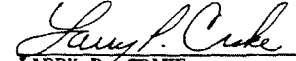
  
Rudy D. Lozano  
Chairman

  
Richard V. Vogl  
Vice Chairman


John E. Olsen  
Commissioner


### COUNTY PLAT BOARD CERTIFICATE:

THIS PLAT HAS BEEN REVIEWED AND IS APPROVED BY THE OAKLAND COUNTY PLAT BOARD ON OCTOBER 26, 1995, AS BEING IN COMPLIANCE WITH ALL OF THE PROVISIONS OF ACT 288, P.A. 1967; AND THE PLAT BOARD'S APPLICABLE RULES AND REGULATIONS.

  
LARRY F. CRAKE  
CHAIRMAN OF THE BOARD OF COMMISSIONERS

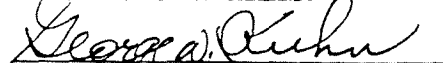
  
C. HUGH DOHANY  
COUNTY TREASURER

  
THOMAS M. SMITH, L.L.S.  
COUNTY PLAT ENGINEER

  
LYNN D. ALLEN, COUNTY CLERK  
REGISTER OF DEEDS

### COUNTY DRAIN COMMISSIONER'S CERTIFICATE:

APPROVED ON MARCH 17, 1995 AS COMPLYING WITH SECTION 192, OF ACT 288, P.A. 1967, AND THE APPLICABLE RULES AND REGULATIONS PUBLISHED BY MY OFFICE IN THE COUNTY OF OAKLAND.

  
GEORGE W. KUHN  
OAKLAND COUNTY DRAIN COMMISSIONER

### CERTIFICATE OF MUNICIPAL APPROVAL:


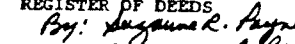
I CERTIFY THAT THIS PLAT WAS APPROVED BY THE TOWNSHIP BOARD OF OAKLAND AT A MEETING HELD ON JUNE 13, 1995, AND WAS REVIEWED AND FOUND TO BE IN COMPLIANCE WITH ACT 288, P.A. 1967, ALSO ADEQUATE SURETY HAS BEEN DEPOSITED WITH THE CLERK FOR THE PLACING OF MONUMENTS AND LOT MARKERS WITHIN A REASONABLE LENGTH OF TIME, NOT TO EXCEED ONE YEAR FROM THE ABOVE DATE, AND THAT SURETY HAS BEEN POSTED TO INSURE THE INSTALLATION OF PUBLIC SEWER AND PUBLIC WATER SERVICES.

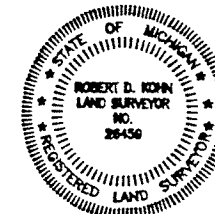
  
CAROLYN L. PHELPS, CLERK

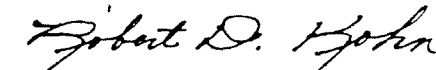
### RECORDING CERTIFICATE:

STATE OF MICHIGAN )  
OAKLAND COUNTY )

THIS PLAT WAS RECEIVED FOR RECORD ON THE 6th DAY OF DECEMBER, 1995, AT 4:28 PM, AND RECORDED IN LIBER 242 OF PLATS, ON PAGES 13, 14, 15, 16, 17, 18, 19 & 20.

  
LYNN D. ALLEN, COUNTY CLERK  
REGISTER OF DEEDS  
By:   
SUZANNE R. PAYNE, DEPUTY





Giffels-Webster Engineers Inc.  
ENGINEERS - SURVEYORS - PLANNERS  
2871 BOND STREET ROCHESTER HILLS MICHIGAN  
48067-3100