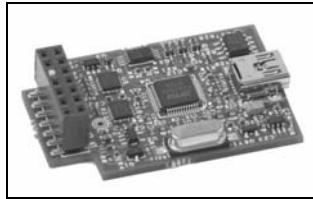


XDS100 Quick Start Guide



XDS100



USB Cable

1.0 SYSTEM REQUIREMENTS

To operate the Spectrum Digital XDS100 JTAG Emulator with your system it needs to meet the following requirements:

- 500 MB of free hard disk space
- Microsoft Windows™ 2000/XP/Vista
- 128 MB of ram
- 16 BIT Color Display
- Internet access
- USB port
- Code Composer Studio Rev 3.3 or later

2.0 WHAT'S INCLUDED

The Spectrum Digital XDS100 USB JTAG emulator kit includes:

- XDS100 USB JTAG Emulator
- USB cable

Note: This kit does **NOT** include Code Composer Studio or drivers. This software can be obtained from Texas Instruments (www.ti.com). See installation instructions below.

3.0 XDS100 USB DEVICE and CODE COMPOSER STUDIO INSTALLATION

Note: Install **ALL** software prior to connecting the XDS100 to the computer !

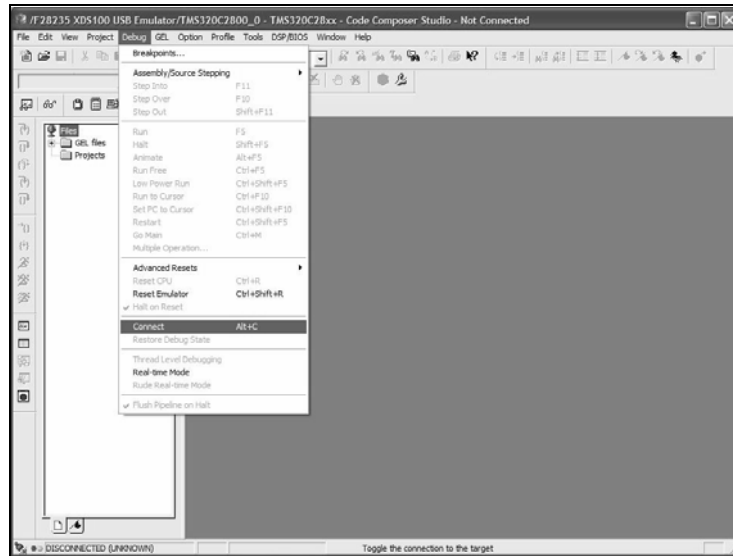
This setup guide assumes the user has already acquired and installed Code Composer Studio (CCS). If CCS has not been installed, then do so now. CCS is **not** included in the Spectrum Digital XDS100 USB JTAG Emulator kit. The Spectrum Digital XDS100 supports CCS 3.3 (section 3.1) and CCS 4.x (section 3.2), which can be downloaded from the TI web site.

The user must be logged onto Windows with "Administrative Rights" and any anti-virus software must be disabled during installations. Please contact your system administrator if help is needed in this area.

3.1 TARGET CONNECTION and CCS 3.3 CONFIGURATION INSTRUCTIONS

1. Download the latest XDS100 software from the Texas Instruments web site. The XDS100 software can be found on the Texas Instruments web site at <http://tiexpressdsp.com/index.php?title=XDS100> under the "XDS100 Installation Instructions" section.

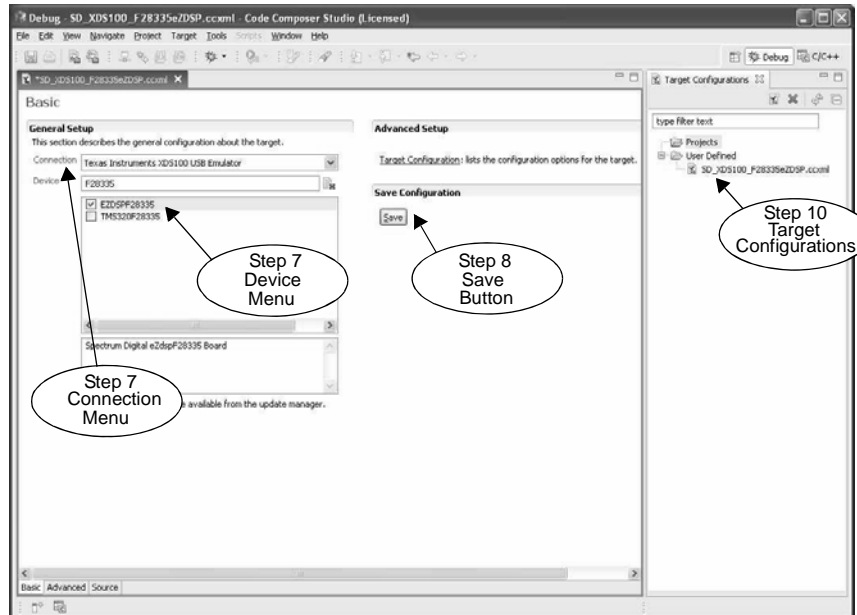
8. Apply power to the target processor board.
9. Click “File-->Save”. Exit the Setup CCS application.
10. Launch CCS from the CCStudio icon on the desktop. When the CCS Window opens, click “Debug-->Connect” to connect CCS with the emulator and target board.



11. Code Composer Studio may now be used to download code and debug code on the target board.

3.2 TARGET CONNECTION and CCS v4 CONFIGURATION INSTRUCTIONS

1. All XDS100 USB drivers and CCS v4 drivers are included with the CCS v4 software installation.
2. Connect the included USB cable to a USB port on the host computer, then connect the USB cable to the XDS100. Windows will recognize the new hardware connection and complete the XDS100 installation automatically.
3. The target processor board should be un-powered at this time. Connect the XDS100 female 14-pin JTAG connector to the 14-pin male JTAG connector on the target board.
4. Launch Code Composer Studio v4 from the shortcut on the desktop. (This was created when CCS v4 was installed.)
5. The Code Composer Studio v4 window will appear. Click the “File” menu, then select “New-->Target Configuration File”
6. The “New Target Configuration” window will appear. Enter a file name that describes the emulator connection and/or Texas Instruments processor being used and then click “Finish”.
7. The “Basic” configuration setup window will appear. Select “Texas Instruments XDS100 USB Emulator” from the “Connection” menu and select the target processor being used from the “Device” menu. (See the screen shot on the next page.)



8. Click the “Save” button to save the configuration
9. Apply power to the target processor board.
10. Click the “View” menu and select “Target Configurations” to expose the configuration(s) that have been built or imported. A new tab labeled “Target configurations” will become available in the CCS window.
11. Expand the “User Defined” folder. Right-click on the configuration that has been created and click “Launch Selected Configuration”.
12. CCS will now attempt to connect to the target processor through the XDS100.
13. Code Composer Studio may now be used to download code and debug code on the target board.

4.0 SUPPORT RESOURCES

1. If you have problems or need additional information please refer to the XDS100 USB wiki on the TI web site. The URL for this site is:
<http://tiexpressdsp.com/index.php?title=XDS100>
2. Code Composer Studio support can be found in the CCS “Help” menu or by contacting TI by email at: **softwaresupport@ti.com**
3. More information about other Spectrum Digital emulators can be found at:
www.spectrumdigital.com

SPECTRUM DIGITAL, INC

12502 Exchange Dr., Ste 440, Stafford, TX. 77477

T: 281.494.4505 F: 281.494.5310

e-mail: sales@spectrumdigital.com website: www.spectrumdigital.com

© Copyright 2009 Spectrum Digital, Inc.