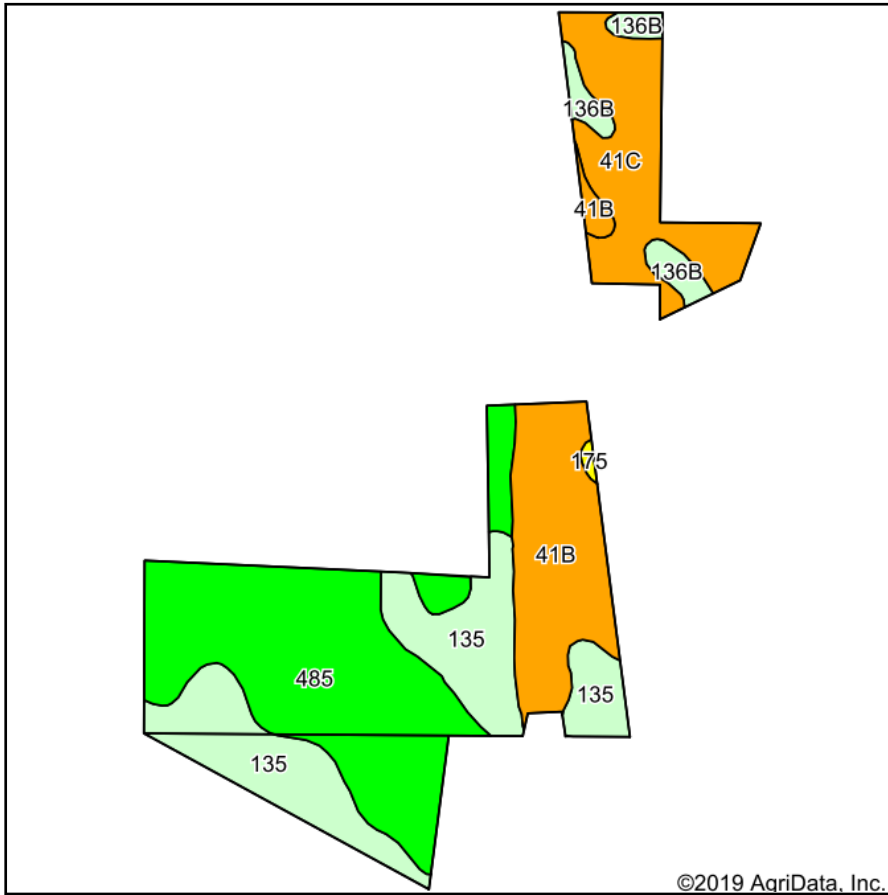
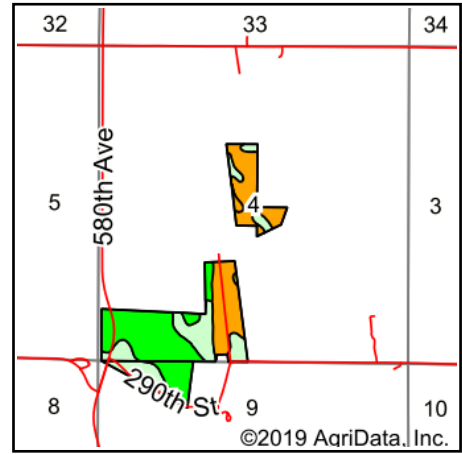


# Soils Map



Soils data provided by USDA and NRCS.



State: **Iowa**  
 County: **Story**  
 Location: **4-82N-23W**  
 Township: **Union**  
 Acres: **90.38**  
 Date: **12/1/2019**



Whitaker Marketing Group  
 AUCTIONS & REAL ESTATE

Maps Provided By:



© AgriData, Inc. 2019

www.AgriDataInc.com



Area Symbol: IA169. Soil Area Version: 31								
Code	Soil Description	Acres	Percent of field	CSR2 Legend	Non-Irr Class *c	Irr Class *c	CSR2**	CSR
485	Spillville loam, 0 to 2 percent slopes, occasionally flooded	34.25	37.9%		Ilw		88	92
135	Coland clay loam, 0 to 2 percent slopes, occasionally flooded	22.77	25.2%		Ilw		76	84
41B	Sparta loamy fine sand, 2 to 5 percent slopes	15.78	17.5%		IVs	Ile	38	42
41C	Sparta loamy fine sand, 5 to 9 percent slopes	13.97	15.5%		IVs		33	26
136B	Ankeny fine sandy loam, 2 to 5 percent slopes	3.37	3.7%		Ille		72	58
175	Dickinson fine sandy loam, 0 to 2 percent slopes	0.24	0.3%		Ills		56	63
<b>Weighted Average</b>							<b>67.1</b>	<b>69.7</b>

\*\*IA has updated the CSR values for each county to CSR2.

\*c: Using Capabilities Class Dominant Condition Aggregation Method  
 Soils data provided by USDA and NRCS.