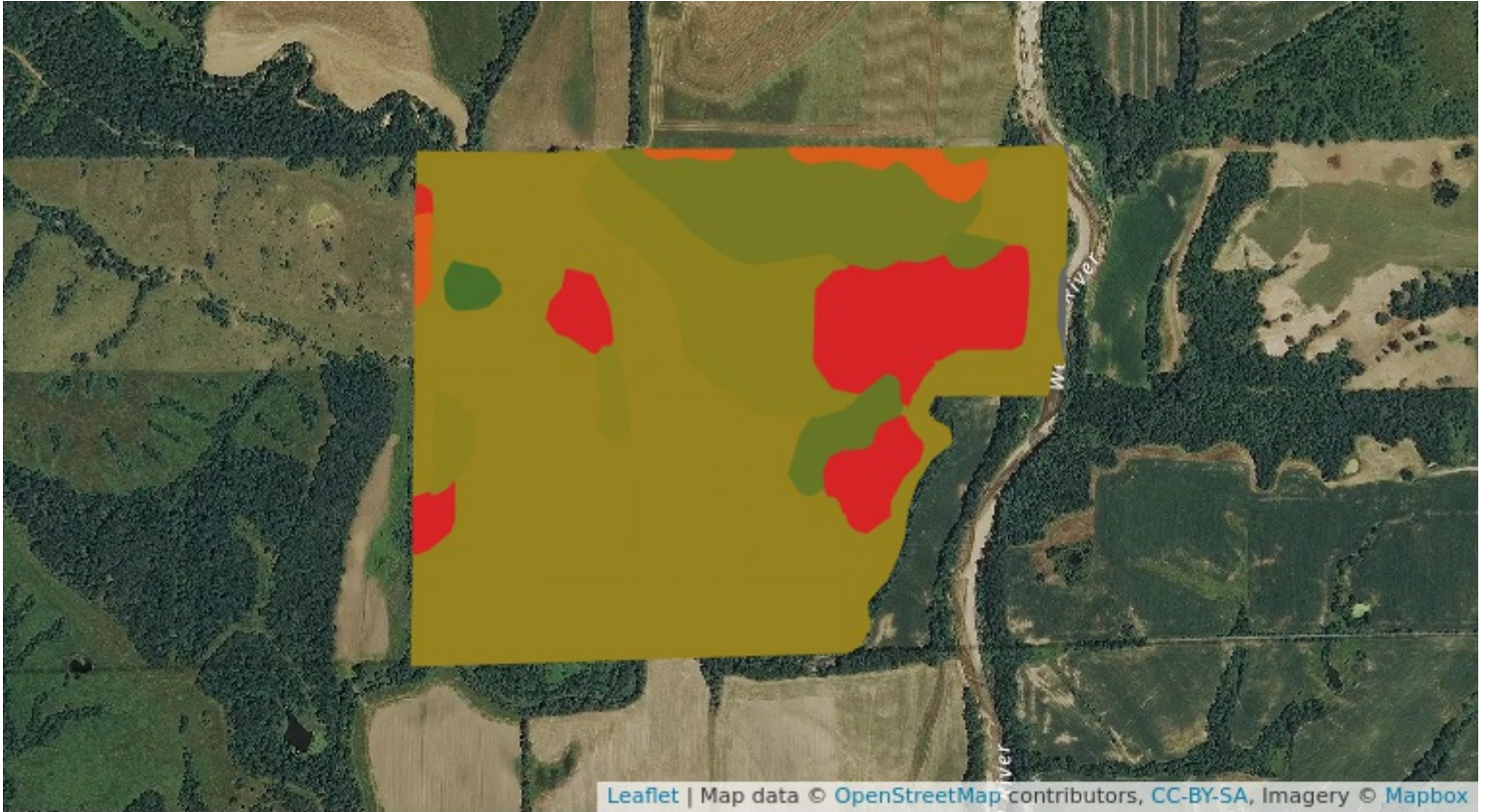


Soil Map – Total Acres

Source: NRCS SSURGO



Code	Description	Acres	% of Field	Soil Class	CSR2
715	Nodaway-Lawson-Klum complex, 0 to 3% slopes	136.03	55.1%	2w	68
269	Humeston silt loam, 0 to 2% slopes	27.54	11.1%	3w	70
587	Chequest silty clay loam, 0 to 2% slopes	27.07	11%	2w	7
51	Vesser silt loam, 0 to 2% slopes	18.62	7.5%	2w	75
54	Zook silty clay loam, heavy till, 0 to 2% slopes, occasionally flooded	11.14	4.5%	2w	68
54+	Zook silt loam, heavy till, 0 to 2% slopes, occasionally flooded, overwash	6.5	2.6%	2w	68
51B	Vesser silt loam, 2 to 5% slopes	6.29	2.5%	2w	75
520	Coppock silt loam, 0 to 2% slopes	5.58	2.3%	2w	79

Soil Map – Total Acres

Source: NRCS SSURGO

	592C2 Mystic clay loam, 5 to 9% slopes	3.15	1.3%	3e	31
	484 Lawson silt loam, heavy till, 0 to 2% slopes, occasionally flooded	1.51	0.6%	2w	86
	220 Nodaway silt loam, heavy till, 0 to 2% slopes, occasionally flooded	1.36	0.5%	2w	77
	1131B Pershing silt loam, terrace	0.67	0.3%	3e	71
	94E2 Caleb-Mystic complex, 9 to 18% slopes	0.71	0.3%	6e	30
	W Water	0.6	0.2%		0
	65F2 Lindley clay loam, 18 to 25% slopes	0.27	0.1%	7e	11
		247.03			61.77