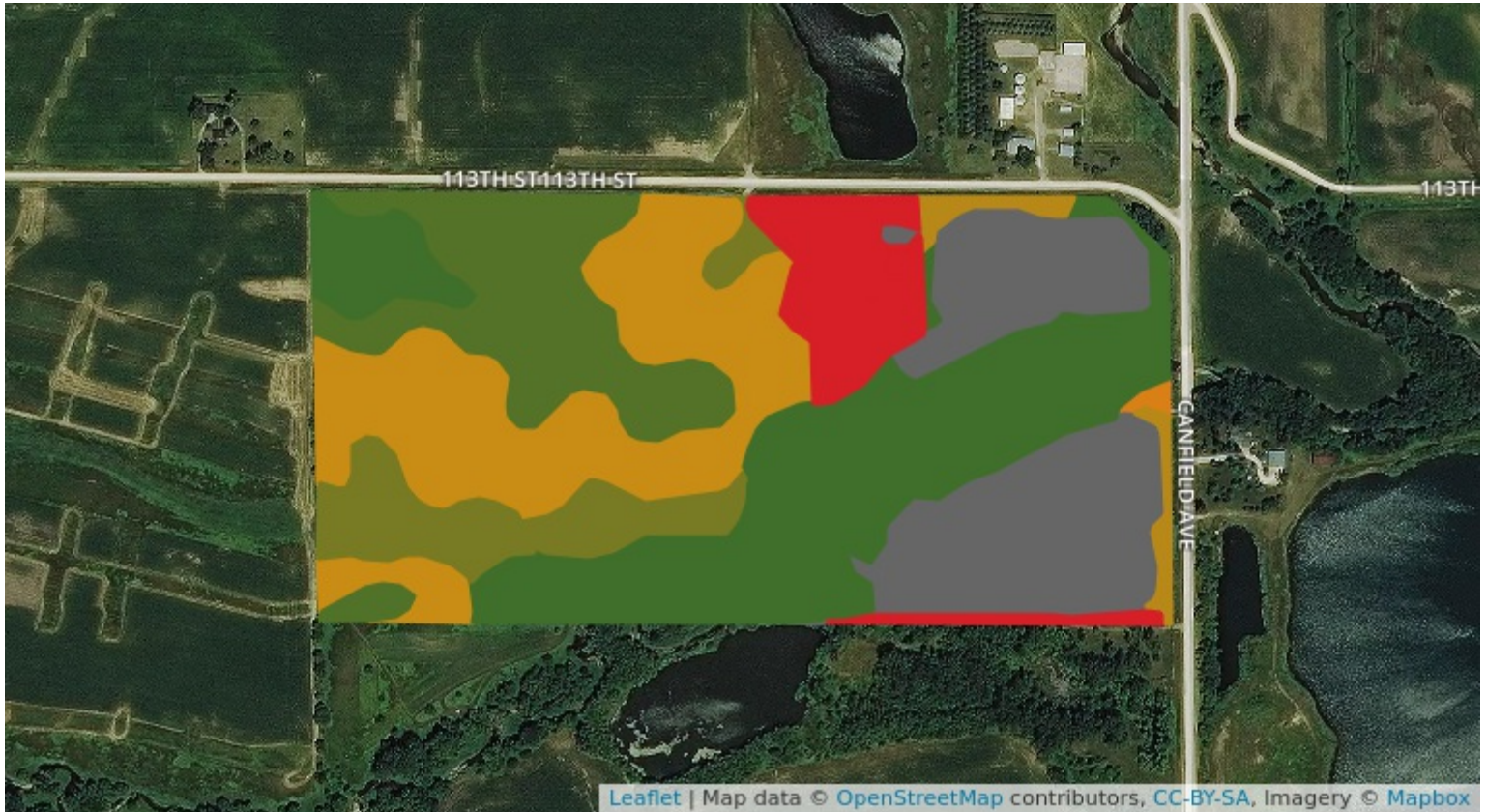


Soil Map – Total Acres



Code	Description	Acres	% of Field	Soil Class	CSR2
485	Spillville loam, 0 to 2% slopes	17.81	23.6%	2w	88
138D2	Clarion loam, 9 to 14% slopes	16.23	21.5%	3e	56
W	Water	14.33	19%		0
L138C2	Clarion loam, Bemis moraine, 6 to 10% slopes, moderately eroded	9.94	13.2%	3e	83
5040	Anthroportic Udorthents, 2 to 9% slopes	5.92	7.8%	6s	5
323C	Terril loam, sandy substratum	3.3	4.4%	3e	75
201B	Coland-Terril complex, 2 to 5% slopes	3.09	4.1%	2w	75
L138B	Clarion loam, Bemis moraine	2.85	3.8%	2e	88
177	Saude loam, 0 to 2% slopes	1.14	1.5%	2s	60

Soil Map – Total Acres

 L138C Clarion loam, Bemis moraine	0.65	0.9%	3e	84
 177C2 Saude loam, 5 to 9% slopes	0.25	0.3%	3e	45
	75.51			55.66