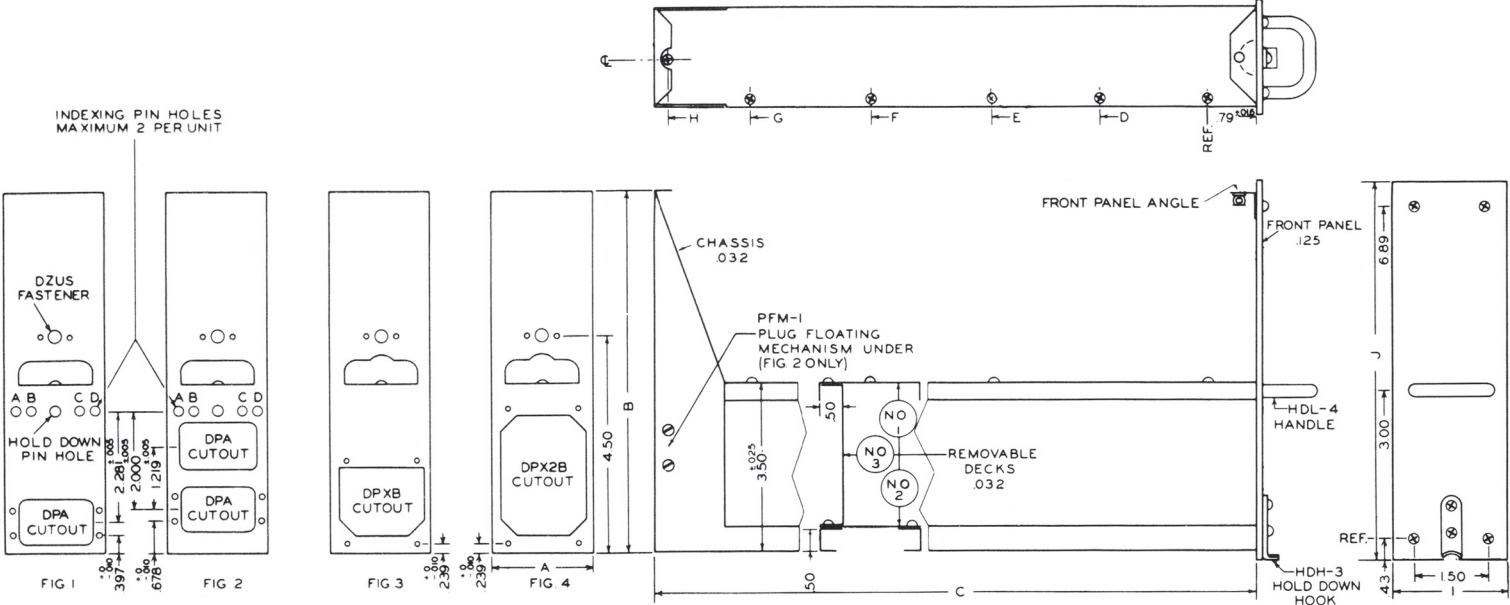


1/4 ATR Chassis

344 Franklin St. • PO Box 761038 • Melrose, MA 02176-0907 • Tel: 781-665-4700 • Toll Free 1-877-390-3932 • Fax: 781-662-5291 • sales@atrbox.com • www.atrbox.com



Catalog No.	Part of ARINC Spec. No. 404 Designation	Connector		Chassis			Deck Plates					Front Panel		Weight				
		Type	Fig.	W ±016	H ±016	L ±016	Length			D ±010	E ±010	F ±010	G ±010	H ±010	I ±016	J ±016	Lbs	Oz
							No.1 ±016	No.2 ±016	No.3 ±016									
C-S111	Short 1/4 ATR	DPA	1	2.15	7.40	12.43	12.37	10.90	10.87	4.50	8.25	0	0	11.32	2.34	7.80	1	0
C-L111	Long 1/4 ATR	DPA	1	2.15	7.40	19.43	19.37	17.90	17.87	3.75	7.50	12.00	15.75	18.32	2.34	7.80	1	4
C-S112	Short 1/4 ATR	DPA	2	2.15	7.40	12.43	12.37	10.90	10.87	4.50	8.25	0	0	11.32	2.34	7.80	1	1
C-L112	Long 1/4 ATR	DPA	2	2.15	7.40	19.43	19.37	17.90	17.87	3.75	7.50	12.00	15.75	18.32	2.34	7.80	1	5
C-S131	Short 1/4 ATR	DPXB	3	2.15	7.40	12.43	12.37	10.90	10.87	4.50	8.25	0	0	11.32	2.34	7.80	1	0
C-L131	Long 1/4 ATR	DPXB	3	2.15	7.40	19.43	19.37	17.90	17.87	3.75	7.50	12.00	15.75	18.32	2.34	7.80	1	4
C-S132	Short 1/4 ATR	DPX2B	4	2.15	7.40	12.43	12.37	10.90	10.87	4.50	8.25	0	0	11.32	2.34	7.80	0	15
C-L132	Long 1/4 ATR	DPX2B	4	2.15	7.40	19.43	19.37	17.90	17.87	3.75	7.50	12.00	15.75	18.32	2.34	7.80	1	3

If Indexing Holes are desired (see figs. 1 & 2) add required letters A thru F to end of catalog number
 For complete Case (chassis and dust cover assembly) omit (C-) from catalog number *Dwarf height available