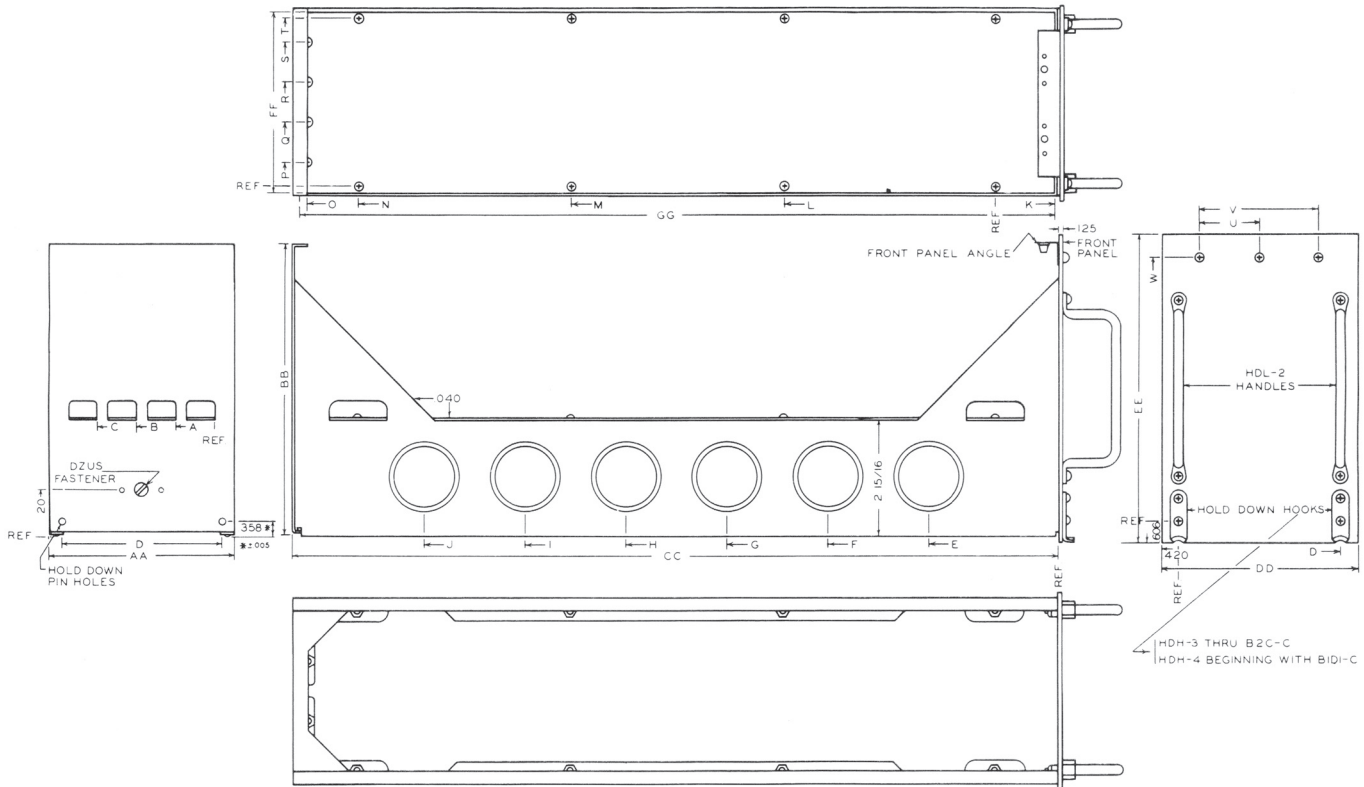




MIL-C-172 Large ATR Chassis

344 Franklin St. • PO Box 761038 • Melrose, MA 02176-0907 • Tel: 781-665-4700 • Toll Free 1-877-390-3932 • Fax: 781-662-5291 • sales@atrbox.com • www.atrbox.com



Catalog No.	Part of Military Designation	Chassis								Front Panel				Deck Plate				A	B	C	D	E	F	G	H	I	J	K	L	M	N	O	P	Q	R	S	T	U	V	W	Wgt.	Lb	Oz							
		AA	BB	CC	DD	EE	FF	GG	HH	II	JJ	KK	LL	MM	NN	OO	PP																											QQ	RR	SS	TT	UU	VV	WW
		±016	±016	±016	±016	±016	±016	±016	±032	±032	±032	±016	±032	±032	±032	±032	±032																											±032	±010	±010	±010	±010	±010	±010
A1A-C	MS91403-A1A	4.72	7.38	9.40	4.97	7.80	4.50	9.13	2.00	0	0	4.13	2.87	6.49	0	0	0	0	1.41	3.13	6.25	0	7.53	.94	3.19	0	0	4.13	0	2.50	6.72	1	6																	
A1B-C	MS91403-A1B	4.72	7.38	12.40	4.97	7.80	4.50	12.13	2.00	0	0	4.13	3.18	6.18	9.18	0	0	0	1.41	4.63	9.25	0	10.53	.94	3.19	0	0	4.13	0	2.50	6.72	1	8																	
A1C-C	MS91403-A1C	4.72	7.38	15.40	4.97	7.80	4.50	15.13	2.00	0	0	4.13	3.18	6.18	9.18	12.18	0	0	1.41	6.13	12.25	0	13.53	.94	3.19	0	0	4.13	0	2.50	6.72	1	10																	
A1D-C	MS91403-A1D	4.72	7.38	19.40	4.97	7.80	4.50	19.13	2.00	0	0	4.13	3.27	5.84	8.40	10.96	13.53	16.08	1.44	5.41	10.81	16.22	17.50	.94	3.19	0	0	4.13	0	2.50	6.72	1	13																	
X1B-C	None	7.35	7.38	12.40	7.59	7.80	7.13	12.13	4.00	0	0	6.75	3.18	6.18	9.18	0	0	0	1.41	4.63	9.25	0	10.53	1.38	5.38	0	0	6.75	0	2.50	6.72	1	15																	
X1C-C	None	7.35	7.38	15.40	7.59	7.80	7.13	15.13	4.00	0	0	6.75	3.18	6.18	9.18	12.18	0	0	1.41	6.13	12.25	0	13.53	1.38	5.38	0	0	6.75	0	2.50	6.72	2	1																	
X1D-C	None	7.35	7.38	19.40	7.59	7.80	7.13	19.13	4.00	0	0	6.75	3.27	5.84	8.40	10.96	13.52	16.08	1.44	5.41	10.81	16.22	17.50	1.38	5.38	0	0	6.75	0	2.50	6.72	2	4																	
B1B-C	MS91403-B1B	9.97	7.38	12.40	10.22	7.80	9.75	12.13	2.38	4.88	7.25	9.38	3.18	6.18	9.18	0	0	0	1.41	4.63	9.25	0	10.53	.94	3.44	5.94	8.44	9.38	0	7.00	6.72	2	8																	
B1C-C	MS91403-B1C	9.97	7.38	15.40	10.22	7.80	9.75	15.13	2.38	4.88	7.25	9.38	3.18	6.18	9.18	12.18	0	0	1.41	6.13	12.25	0	13.53	.94	3.44	5.94	8.44	9.38	0	7.00	6.72	2	10																	
B2C-C	MS91403-B2C	9.97	10.38	15.40	10.22	10.80	9.75	15.13	2.38	4.88	7.25	9.38	3.18	6.18	9.18	12.18	0	0	1.41	6.13	12.25	0	13.53	.94	3.44	5.94	8.44	9.38	0	7.00	9.72	3	5																	
B1D1-C	MS91403-B1D1	9.97	7.38	19.40	10.22	7.80	9.75	19.13	2.38	4.88	7.25	9.38	3.27	5.84	8.40	10.96	13.52	16.08	1.44	5.41	10.81	16.22	17.50	.94	3.44	5.94	8.44	9.38	0	7.00	6.72	2	14																	
B1D2-C	MS91403-B1D2	9.97	7.38	19.40	10.22	7.80	9.75	19.13	2.38	4.88	7.25	9.38	3.27	5.84	8.40	10.96	13.52	16.08	1.44	5.41	10.81	16.22	17.50	.94	3.44	5.94	8.44	9.38	0	7.00	6.72	2	14																	
B2D1-C	MS91403-B2D1	9.97	10.38	19.40	10.22	10.80	9.75	19.13	2.38	4.88	7.25	9.38	3.27	5.84	8.40	10.96	13.52	16.08	1.44	5.41	10.81	16.22	17.50	.94	3.44	5.94	8.44	9.38	0	7.00	9.72	3	7																	
B2D2-C	MS91403-B2D2	9.97	10.38	19.40	10.22	10.80	9.75	19.13	2.38	4.88	7.25	9.38	3.27	5.84	8.40	10.96	13.52	16.08	1.44	5.41	10.81	16.22	17.50	.94	3.44	5.94	8.44	9.38	0	7.00	9.72	3	7																	
C1C-C	MS91403-C1C	15.22	7.38	15.40	15.47	7.80	15.00	15.13	4.10	8.13	12.25	14.63	3.18	6.18	9.18	12.18	0	0	1.41	6.13	12.25	0	13.53	.94	5.19	9.44	13.69	14.63	6.38	12.75	6.72	3	9																	
C2C-C	MS91403-C2C	15.22	10.38	15.40	15.47	10.80	15.00	15.13	4.10	8.13	12.25	14.63	3.18	6.18	9.18	12.18	0	0	1.41	6.13	12.25	0	13.53	.94	5.19	9.44	13.69	14.63	6.38	12.75	9.72	4	8																	
C1D-C	MS91403-C1D	15.22	7.38	19.40	15.47	7.80	15.00	19.13	4.10	8.13	12.25	14.63	3.27	5.84	8.40	10.96	13.52	16.08	1.44	5.41	10.81	16.22	17.50	.94	5.19	9.44	13.69	14.63	6.38	12.75	6.72	4	0																	
C2D-C	MS91403-C2D	15.22	10.38	19.40	15.47	10.80	15.00	19.13	4.10	8.13	12.25	14.63	3.27	5.84	8.40	10.96	13.52	16.08	1.44	5.41	10.81	16.22	17.50	.94	5.19	9.44	13.69	14.63	6.38	12.75	9.72	4	13																	

For complete Case (chassis and dust cover assembly) omit [-C] from catalog number.