

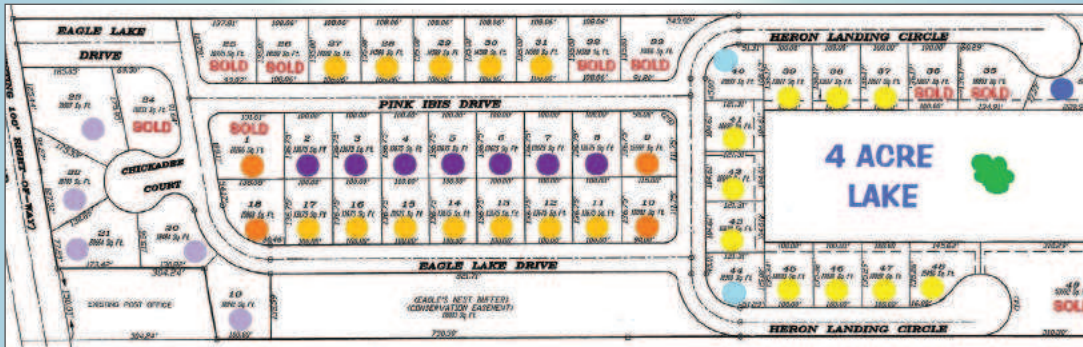


239-282-0770 www.CastawaysRealty.com

Eagle Lake Estates St. James City, Florida



Interior lots (2-8) (11-17) & (27-31)
\$24,900
Corner lots (9) (10) & (18)
\$34,900
Cul-de-Sac lots (19) & (23)
\$34,900
All Lake lots
\$54,900



<p>NEILL FRIES CASTAWAYS REALTY 1 INC 239-229-0437 CELL 239-282-0770 OFFICE WWW.CASTAWAYSREALTY.COM NEILLFRIES@EARTHLINK.NET</p>	<p>J.R. GATEWOOD GATEWOOD CUSTOM CARPENTRY, INC 239-283-9663 OFFICE 239-283-8414 FAX SALES@EAGLE LAKE INFO.COM WWW.EAGLELAKEINFO.COM</p>
---	---

Build the home of your dreams. Need Financing? We can help.

RESIDENTIAL WATERFRONT HOMESITES

- 3261 Stablie Rd. \$250,000
- 3901 Stablie Rd. \$110,000
- 8157 Moyer Lane \$229,900
- 8153 Moyer Lane \$269,900
- 5103 Genesee Pkwy. \$124,900
- 2449 Macadamia Ln.- Quick bay access \$239,000

DUPLEX HOMESITES

- 12356 Stringfellow Rd. \$55,000
- This is a 3-lot package price! Bokeelia
- 5751 Marina Rd. \$39,000 Corner lot for duplex OR single family site, over 1/2 acre, Bokeelia

RESIDENTIAL OFF-WATER HOMESITES

- 3371 Heron Landing Cir. \$59,900
- 3690 Chickadee Ct. **PENDING**
- 1 acre Shadypine Ln. \$84,900
- 7030 Papaya St. Bokeelia \$13,900
- 3480 Stringfellow Rd. Gulf access \$89,000
- 5401 Western Dr. **SOLD**
- 4412 Pine tree- 10 Acres \$329,500
- 4456 Lake Heather \$24,500

COMMERCIAL LOTS

- 5657 Pine Island Rd. NW, C-1 Zoning \$350,000
- 3351 & 3381 Stringfellow Rd. Adjoining lots \$275,000 each
- 8579 Stringfellow Rd \$65,900
- 8561 Stringfellow Rd. \$62,500