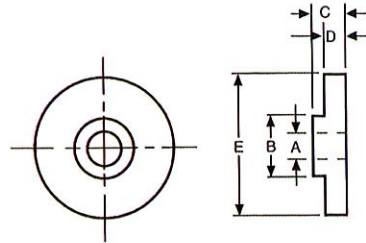
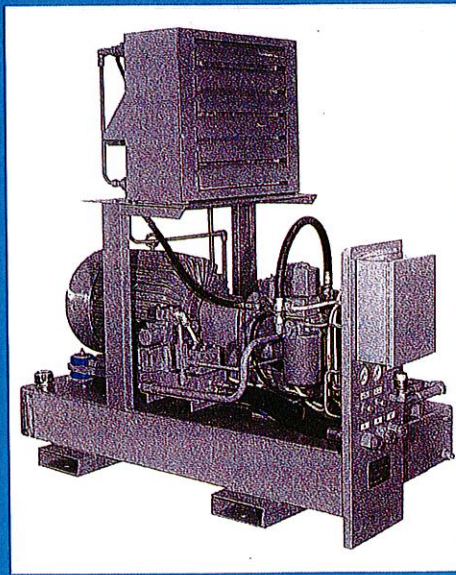
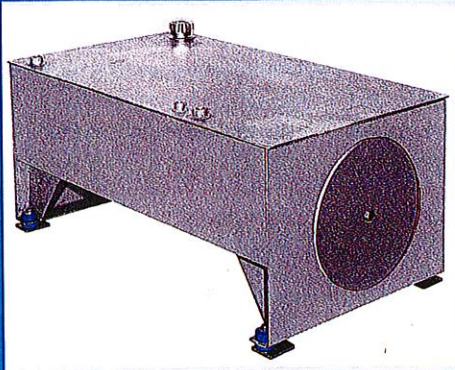
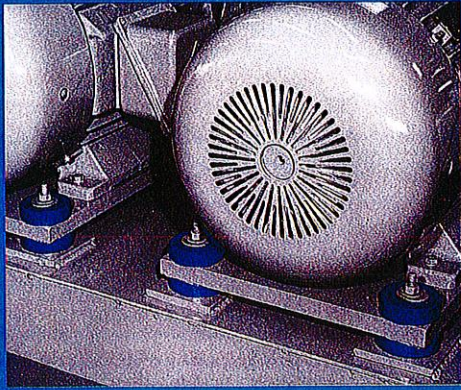




NEWTON

Isolation Mounts

REDUCE: VIBRATION, SHOCK, NOISE



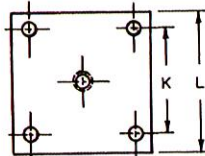
MATERIAL - E•A•R®C-1002
DENSITY - 80# PER CU. FT.
MAX. TEMP - 150° F
DUROMETER - 64/59 SHORE A
NAT.FREQ - APPROX. 22HZ AT
 LOAD CAPACITY

ISOLATION MOUNT

ISOLATOR NUMBER	IDEAL LOAD POUNDS PER ISOLATION	MOUNTING BOLT SIZE	A	B	C	D	E
4250	50	1/4	5/16	1/2	5/8	1/2	1-11/64
42100	100	3/8	7/16	3/4	13/16	5/8	1-21/32
42200	200	1/2	9/16	1	1	3/4	2-21/64
42500	500	1/2	9/16	1	1-3/8	1	3-39/64
421000-A	1000	3/4	7/8	1-3/8	1-1/8	9/16	5-1/4
421000-B	-	3/4	7/8	N/A	N/A	9/16	5-1/4
421500	1500	1	1-1/16	1-3/4	1-3/4	1-1/4	6-7/16
421500-A	-	1	1-1/16	1-3/4	1-1/8	5/8	6-7/16

NOTE: 42100-A and 421500-A are to be used as top or non-load bearing isolator only.

MOUNTING BRACKET ASSEMBLY



ISOLATOR NUMBER	F	G	H	H ₁	J	K	L
4250-MB	1/4 - 20	1/4	2-3/4	4	1/4	1-3/4	2-1/2
42100-MB	3/8 - 16	1/4	3-3/8	5	3/8	2-1/8	3
42200-MB	1/2 - 13	3/8	5	6-1/2	1/2	3-1/8	4
42500-MB	1/2 - 13	3/8	5	6-1/2	1/2	4	5
421000-MB	3/4 - 10	1/2	6	7-1/2	5/8	5	6-1/2
421500-MB	1 - 8	5/8	7	8-1/2	5/8	5-3/4	7-1/2

NOTE: H₁ dimensions are used for leveling kit.

Mounting assembly consists of: 2 pieces of Newton Isolation Mounts, mounting bracket, steel washer, and lock nut. Add (-L) to Mounting Bracket Assembly number for leveling nut and heavy duty steel washers.

TYPICAL BASE MOUNTINGS

